

ISSUE 1
MARCH 2025



Water Solutions for a Healthier Environment

CliniMix® Thermostatic Mixing Valves



CliniMix® Lead Safe™ Thermostatic Mixing Valves

Galvin Engineering and RMC Reliance Valves (RMC), two iconic Australian manufacturers with a rich legacy in the Australian Plumbing industry, have partnered together to introduce the new CliniMix® Lead Safe™ Thermostatic Mixing Valves (TMV).

Australian Made & Lead Safe

Our CliniMix® TMVs are manufactured with genuine Australian Made and lead free materials, providing high quality products you can trust.

Designed to protect the most vulnerable, our CliniMix® TMVs give you precise control over the delivery of water, enabling the prevention of scalding and cold water shock by providing tempered water to the desired outlets, in compliance with relevant Australian Standards.

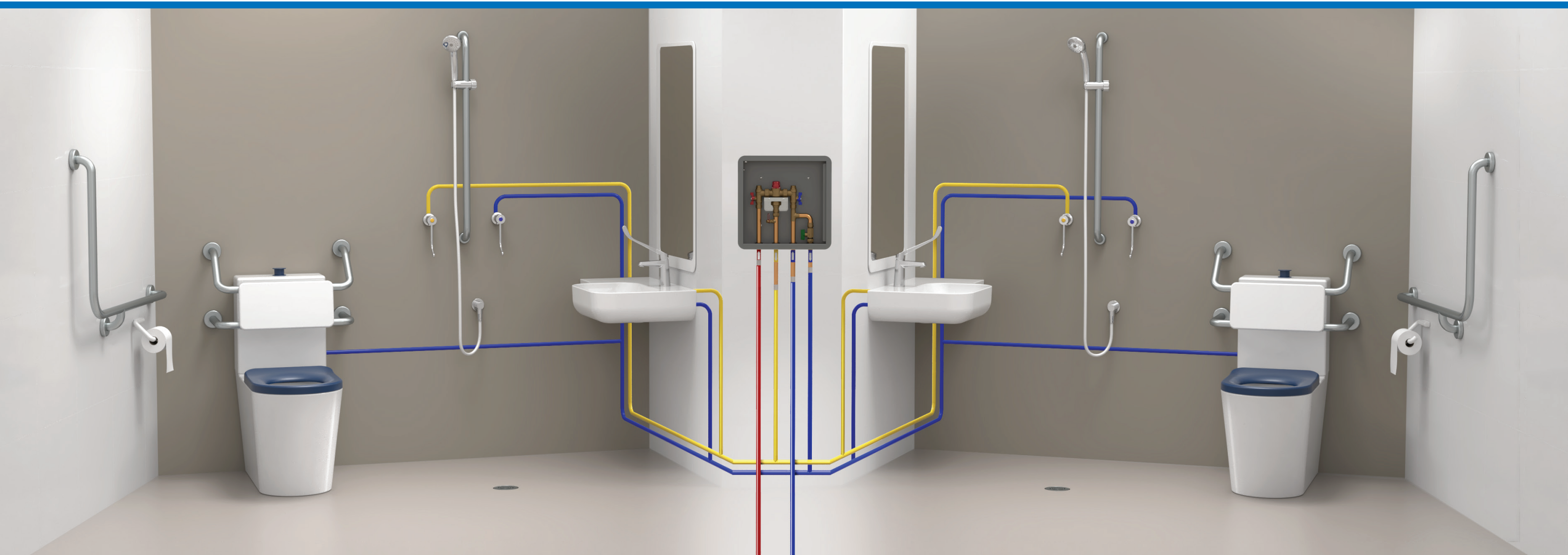
From the CliniMix® 1500 through to the CliniMix® Emergency Shower, we have a range of TMVs fit to service high risk and high care environments, including hospitals aged care, child care, education and public spaces.

Environmental Sustainability

RWC demonstrates its commitment to environmental sustainability by recycling materials in their manufacturing processes. Combining scrap material such as reclaimed electrical and telecommunication wires with excess brass swarf from product manufacturing results in all copper consumed being from recycled sources.

By using 100% recycled copper the demand for virgin materials is reduced and waste is minimised.

Recycling copper not only conserves valuable resources but also reduces energy consumption and greenhouse gas emissions, reducing overall environmental impact.





CliniMix® 1500

Lead Safe™ Thermostatic Mixing Valve

Product Code: 201.70.11.09

- Thermal flush activation incorporated within headworks for superior flush capabilities.
- In the event of either hot or cold water supply failure the valve will shut down, quickly restoring flow when normal conditions resume.
- Water temperature is established at plus or minus 2 degrees even during water pressure or temperature fluctuations.
- Suitable for installation in low-pressure systems and will operate with working pressure as low as 20kPA.
- Can be installed in any configuration with the water outlet in the horizontal or vertical position, and inlet connections can be rotated to suit inlet pipework.
- NSW Health approval for use in healthcare in NSW



Outlet Temperature Range (°C): 35 Min - 50 Max*
 Hot Supply Temperature (°C): 55 Min - 90 Max
 Cold Supply Temperature (°C): 5 Min - 30 Max
 Hot to Mix Temperature Differential (°C): 10 Min
 Cold to Mix Temperature Differential (°C): 5 Min

*AS 4032.1: approved adjustment range 38 - 50°C



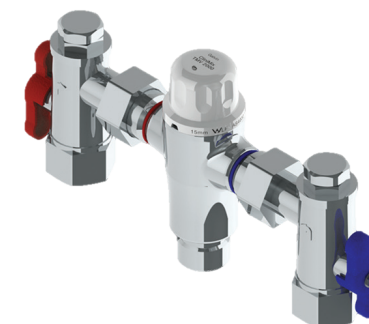
CliniMix® 1000

Lead Safe™ Thermostatic Mixing Valve

Product Code: 201.70.01.09

- Outlet Temperature Range (°C): 35 Min - 50 Max*
- Hot Supply Temperature (°C): 55 Min - 90 Max
- Cold Supply Temperature (°C): 5 Min - 30 Max
- Hot to Mix Temperature Differential (°C): 10 Min
- Cold to Mix Temperature Differential (°C): 5 Min

*AS 4032.1: approved adjustment range 38 - 50°C



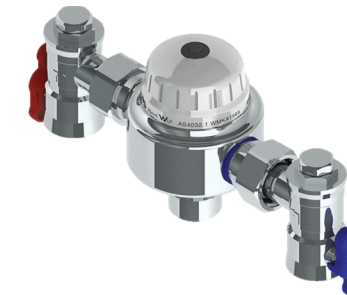
CliniMix® 2000

Lead Safe™ 3/4" Thermostatic Mixing Valve

Product Code: 201.70.02.00

- Outlet Temperature Range (°C): 35 Min - 50 Max*
- Hot Supply Temperature (°C): 55 Min - 90 Max
- Cold Supply Temperature (°C): 5 Min - 30 Max
- Hot to Mix Temperature Differential (°C): 10 Min
- Cold to Mix Temperature Differential (°C): 5 Min

*AS 4032.1: approved adjustment range 38 - 50°C



CliniMix® 2500

Lead Safe™ 3/4" Thermostatic Mixing Valve

Product Code: 201.70.03.00

- Outlet Temperature Range (°C): 35 Min - 50 Max*
- Hot Supply Temperature (°C): 55 Min - 90 Max
- Cold Supply Temperature (°C): 5 Min - 30 Max
- Hot to Mix Temperature Differential (°C): 10 Min
- Cold to Mix Temperature Differential (°C): 5 Min

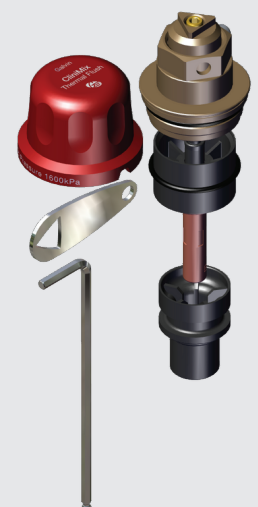
*AS 4032.1: approved adjustment range 38 - 50°C

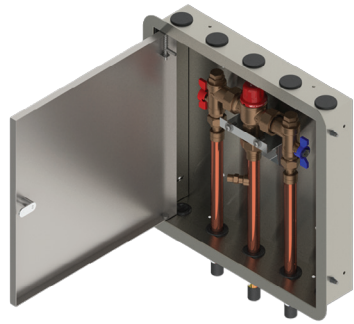
CliniMix® Lead Safe™

TMV 5-Year Upgrade/Service Kit

Product Code: 201.79.10.09

- Kit includes: red protective cover, top cap assembly, element and piston assembly, mixing tube, o-ring, temperature adjustment key, allen key and grease.
- Suitable for 5-year service or thermal flush option.
- Compatible with CliniMix® 1000, 1500 and 2000 TMV models.





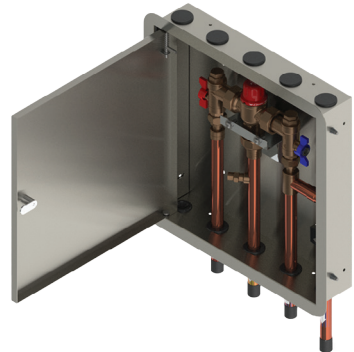
CliniMix® 1500

Lead Safe™ Thermostatic Mixing Valve in Cabinet

Product Code: 201.10.70.10

- Outlet Temperature Range (°C): 35 Min - 50 Max*
- Hot Supply Temperature (°C): 55 Min - 90 Max
- Cold Supply Temperature (°C): 5 Min - 30 Max
- Hot to Mix Temperature Differential (°C): 10 Min
- Cold to Mix Temperature Differential (°C): 5 Min

**AS 4032.1: approved adjustment range 38 - 50°C*



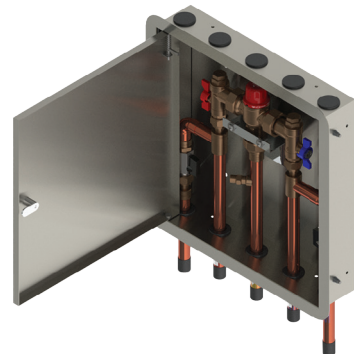
CliniMix® 1500

Lead Safe™ Thermostatic Mixing Valve with Cold Bypass in Cabinet

Product Code: 201.11.70.10

- Outlet Temperature Range (°C): 35 Min - 50 Max*
- Hot Supply Temperature (°C): 55 Min - 90 Max
- Cold Supply Temperature (°C): 5 Min - 30 Max
- Hot to Mix Temperature Differential (°C): 10 Min
- Cold to Mix Temperature Differential (°C): 5 Min

**AS 4032.1: approved adjustment range 38 - 50°C*



CliniMix® 1500

Lead Safe™ Thermostatic Mixing Valve with Cold & Hot Bypass in Cabinet

Product Code: 201.13.70.10

- Outlet Temperature Range (°C): 35 Min - 50 Max*
- Hot Supply Temperature (°C): 55 Min - 90 Max
- Cold Supply Temperature (°C): 5 Min - 30 Max
- Hot to Mix Temperature Differential (°C): 10 Min
- Cold to Mix Temperature Differential (°C): 5 Min

**AS 4032.1: approved adjustment range 38 - 50°C*



CliniMix® Mini

Lead Safe™ 1/2" Thermostatic Mixing Valve

Product Code: 201.71.00.00

- Ultra compact design for easy fitting under sink, behind basin shroud and close to tapware.
- Thermal flush activation incorporated within headworks for superior flush capabilities.
- In the event of either hot or cold water supply failure the valve will shut down, quickly restoring flow when normal conditions resume.
- Water temperature is established at plus or minus 2 degrees even during water pressure or temperature fluctuations.
- Suitable for installation in low-pressure systems and will operate with working pressure as low as 20kPA.
- Can be installed in any configuration with the water outlet in the horizontal or vertical position, and inlet connections can be rotated to suit inlet pipework.



Hot Supply Temperature (°C): 50 Min - 90 Max
Cold Supply Temperature (°C): 5 Min - 30 Max*
Hot to Mix Temperature Differential (°C): 7 Min
Outlet Temperature Range (°C): 35 Min - 45 Max (+/-2)

**Where cold inlet temperature may exceed recommended range due to seasonal variation, a 5°C temperature differential between the inlet cold supply and outlet mixed temperature setting must be maintained.*

Spare Parts

Item Code	Description	Where Used
201.79.10.09	CliniMix® Lead Safe™ TMV 5-Year Upgrade/Service Kit	1000 / 1500 / 2000
201.90.01.90	CliniMix® Lead Safe™ TMV O-Ring Kit	1000 / 1500 / 2000
201.90.07.90	CliniMix® Lead Safe™ TMV Test Plug Kit	1000 / 1500
201.90.05.90	CliniMix® Lead Safe™ TMV 1/2" Inlet Fittings Strainer Kit	1000 / 1500
201.90.04.90	CliniMix® Lead Safe™ TMV 1/2" Inlet Fitting Kit	1000 / 1500
201.90.03.90	CliniMix® Lead Safe™ TMV Face Seal Kit	1000 / 1500
201.90.06.90	CliniMix® Lead Safe™ TMV 1/2" Inlet Fittings O-Ring Kit	1000 / 1500 / 2000



CliniMix® Emergency Shower

Thermostatic Mixing Valve

Product Code: 190.88.00.09

- Designed for combination with GalvinSafe® (HAWS) emergency decontamination equipment, including showers and eye/face washes.
- In the event of either hot or cold water supply failure the valve will shut down, quickly restoring flow when normal conditions resume.



Outlet Temperature Range (°C): Coming Soon
Hot Supply Temperature (°C): Coming Soon
Cold Supply Temperature (°C): Coming Soon
Hot to Mix Temperature Differential (°C): Coming Soon
Cold to Mix Temperature Differential (°C): Coming Soon

Kit 1



Tapware

Flowmatic® Basin Tap, Mains,
Single Temp



TMV

CliniMix® Mini Lead Safe™ TMV

Product Code: 201.00.00.90

- Hands free electronically controlled sensor activated.
- Temporary-off and continuous-on options available to suit specific needs.
- Hygienic rinse water flow time adjustable to comply with health standards with adjustable 12, 24 or 72 hour.
- AS 1428.1 accessible compliant.
- Tapware: 6 Star WELS Rating (5.5L/pm), WaterMark AS/NZ 3718 Lic. WMKA020371.

Kit 2



Tapware

Flowmatic® Lino L20 Basin Tap,
Mains



TMV

CliniMix® Mini Lead Safe™ TMV

Product Code: 201.00.08.90

- Infrared sensors with automatic setting feature and microprocessor.
- Temporary-off and continuous-on options available to suit specific needs.
- Modular one piece construction with all serviceable components above the basin.
- Tapware: 6 Star WELS Rating (4.5L/pm), WaterMark AS/NZ 3718 Lic. WMKA020371.

Kit 3



Tapware
Knee Operated Timeflow Valve,
Regulator, Spout & Connection Kit



TMV
CliniMix® Mini Lead Safe™ TMV

Product Code: 201.01.00.90

- Handsfree operation to support infection control and save on cleaning time.
- Timeflow shut off for major water and electricity savings.
- Robust lever for heavy usage.
- Tapware: 6 Star WELS Rating (4.5L/pm), WaterMark AS/NZ 3718 Lic. WMKA0034.

Kit 4



Tapware
Ezy-Push® Lead Safe™ Timeflow
Pillar Tap - 6 Sec



TMV
CliniMix® Mini Lead Safe™ TMV

Product Code: 201.03.00.90

- Self-closing operation.
- Smooth round design to facilitate easy cleaning and helps reduce dirt and bacteria growth.
- Complies with NSW Education EFSG Guidelines.
- Tapware: 6 Star WELS Rating (5.0L/pm), WaterMark AS/NZ 3718 Lic. WMKA0034.

Kit 4



Tapware
CliniLever® Lead Safe™ Accessible
Basin Mixer



TMV
CliniMix® Mini Lead Safe™ TMV

Product Code: 201.02.01.90

- Ideal for use in disabled bathrooms where access is paramount.
- Complies to Victorian School Building Authority (VSBA).
- AS 1428.1 accessible compliant.
- Tapware: Dual WELS 6 Star Rating (4.0L/pm) & 5 Star Rating (6.0L/pm), WaterMark AS/NZ 3718 Lic. WMKA0034.

Kit 6



Tapware
GalvinSafe® Free Standing Combi
Shower (HAWS)






TMV
CliniMix® Emergency Shower TMV

Product Code: 190.89.00.90

- Includes a 279mm round bowl, an AXION® MSR ABS eye/face wash head and AXION® MSR hydrodynamic showerhead.
- Eye/face wash and valve assembly are pre-built and fully water/pressure tested to ensure no leaks and proper function.
- AXION® MSR ABS showerhead provides equal distribution of water throughout the entire footprint of flow.
- AXION® MSR eye/face wash head uses an inverted directional laminar flow to sweep contaminants away from the vulnerable nasal cavity.

We design, manufacture
and supply safe,
green and smart water
solutions for high
risk and high care
environments.

 1300 514 074
 sales@galvinengineering.com.au
 galvinengineering.com.au

- Australia
- New Zealand
- UK
- USA

© CliniMix, CliniLever, Ezy-Push, Flowmatic, GalvinSafe, Galvin Engineering, Galvin Specialised. All rights reserved.
™ Lead Safe. © Galvin Engineering Pty Ltd



**A family
owned
Australian
business**

Whilst all reasonable care has been taken in compiling the information in this document, the designs, dimensions and products shown are indicative only and should not be relied upon without prior approval. Due to our policy of continuous development, we reserve the right to alter any details of specifications or products without notice. All information, drawings, technical specifications and product designs remain the property of Galvin Engineering Pty Ltd.