

ISSUE 4
APRIL 2026

galvin

Water Solutions for a Healthier Environment

A photograph of a modern, multi-level circular atrium. The space features two levels of walkways with metal railings. The walls are a light beige color, and the doors are a vibrant orange. Large windows on the upper level provide natural light. The floor is a dark, polished material. The overall design is clean and functional.

**Correctional
Facility
Solutions**

Innovating the Corrections Industry in Australia: Overcoming Design Challenges for Modern Facilities

In the world of corrections, the design of facilities plays a crucial role in maintaining security, promoting rehabilitation, and ensuring the well-being of both staff and inmates.



Design Challenges in the Corrections Industry

Designing correctional facilities requires a delicate balance between security, functionality, and aesthetics providing a normalised environment. The corrections industry in Australia faces numerous challenges in this regard:

- Ensuring the safety of both staff and inmates is of paramount importance. The design must incorporate robust security measures that prevent escapes, maintain order, and minimise risks. Additionally, the facilities must be flexible enough to accommodate varying levels of security requirements, from low to maximum security settings.
- Correctional facilities must promote rehabilitation and reintegration. The design should facilitate educational and vocational programs, encourage positive behaviour, and create a supportive environment that aids in successful re-entry into society.
- Correctional facilities should prioritise the provision of adequate natural light, ventilation, and hygienic conditions. Ensuring privacy, dignity, and accessibility within the facilities is crucial for promoting mental and physical wellbeing. However, achieving these objectives while adhering to stringent security requirements and cost-effectiveness presents unique design challenges.

Designing Bathrooms for Correctional Facilities

Bathrooms in correctional facilities require special attention due to their critical role in maintaining hygiene, safety, and privacy. The challenges faced in bathroom design within this context are multi-faceted and demand careful consideration.

Security is the primary concern in correctional facility bathrooms. The design must minimise potential risks, such as hiding places or access to contraband. The selection of materials and fixtures must prioritise durability, tamper resistance, and ease of maintenance while ensuring they do not compromise safety.

Furthermore, maintaining hygienic conditions in correctional facility bathrooms is of utmost importance. Designers must focus on implementing appropriate ventilation systems, and efficient water management systems to minimise the risk of infection and promote cleanliness. Implementing an effective water management system can contribute to water conservation and empower the facility to regulate water consumption, thereby upholding rigorous environmental standards.

As the leading provider of water control solutions for the corrections industry in Australia, we understand the unique challenges faced by designers and facility owners in creating safe, efficient, and humane environments

Definitions

Ligature Resistant and Anti-Ligature

The terms ligature resistant and anti-ligature have many varying definitions, and are often used interchangeably, especially in healthcare and behavioural health settings.

The terminology also varies across countries. In Australia and the UK, the use of anti-ligature seems more common, whilst in the USA, ligature resistant appears more predominant.

Ligature resistant and anti-ligature refer to the design features or modifications incorporated into products and spaces specifically aimed at minimising or preventing individuals from using a ligature to harm themselves, particularly through hanging or strangulation.

With products, this typically means designed to be without points where a cord, rope, or other material, can be looped or tied to create a point of attachment that could be used by vulnerable individuals for self-harm.

Vandal Resistant and Anti-Vandal

The terms vandal resistant and anti-vandal have many varying definitions, and are often used interchangeably, especially in educational, healthcare and public settings.

Vandal resistant and anti-vandal refer to features or designs incorporated into products and spaces specifically aimed at deterring or preventing acts of vandalism or intentional damage to property. These features can include durable materials, robust

construction, rounded edges, concealed components, reinforced structures, and tamper-resistant fixtures.

By implementing vandal resistant and anti-vandal measures, the risk of property damage, disruption of services, and associated costs can be significantly reduced. It is important because it helps protect infrastructure, ensures the smooth operation of essential services, and contributes to creating safe and well-maintained environments for everyone to enjoy.

Our Mission

Designing, manufacturing and supplying safe, green and smart water solutions for high risk and high care environments lies at the heart of what we do.

Our products have been designed exclusively for correctional facilities. Our range of innovative bathroom at-risk-patient protection products have been carefully selected from leading international manufacturers or are locally manufactured in Australia.

We are committed to providing market-leading products to suit every application and exclusively design and distribute a wide range of established products, and can modify, adapt, source or create a solution for your unique situation. The design of our products reflects a modern philosophy that promotes a safe but normalised environment assisting with wellbeing and rehabilitation. Strong emphasis is placed on designs that incorporate home like, non-institutional environments that imbue familiarity and a sense of being valued.

Corrections Bathroom Solution

Choosing a full room solution for correctional facility washroom tapware and sanitaryware offers several benefits, including enhanced security and durability. With integrated features like tamper proof faucets and vandal resistant fixtures, it ensures a safer environment while reducing maintenance and replacement costs in high-demand settings.



Showers & Controllers

Our GalvinCare® shower controllers, roses, and hoses are purpose-designed for correctional facilities, featuring ligature resistant and vandal resistant properties to enhance safety and security. These specialised components help reduce the risk of self-harm, prevent tampering and vandalism, and minimise opportunities for contraband concealment.



GalvinCare® CP-BS Lead Safe™ Ligature Resistant Shower Rose with 100mm Bolting Plate

Product Code: 121.35.64.00



GalvinCare® CP-BS Lead Safe™ Ligature Resistant Ceiling Mtd Shower Rose with SS Plate

Product Code: 121.70.10.00



GalvinCare® Brushed SS304 Ligature Resistant Ceiling Mtd Shower with Removable Plate

Product Code: 121.70.62.11



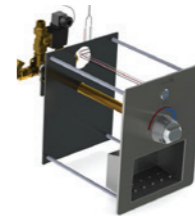
CliniMix® Lead Safe™ Ligature Resistant Inwall Thermostatic Progressive Shower Mixer - Warm & Cold

Product Code: 100.50.75.01



GalvinCare® CP-BS Ligature Resistant Electronic Concealed Ezy-Grip Shower Mixer

Product Code: 52406



GalvinCare® Ligature Resistant Electronic Ducted Ezy-Grip Low Profile Shower Mixer with Soap Holder

Product Code: 52420



GalvinCare® CP-BS Lead Safe™ Ligature Resistant Safe-Connect Shower Head & Hand Shower

Product Code: 121.36.64.92



GalvinCare® CP-BS Lead Safe™ Ligature Resistant Wall Mtd Shower Rose

Product Code: 121.33.64.00



CliniMix® CP-BS Lead Safe™ Ligature Resistant Electronic Ducted Thermostatic Progressive Shower Mixer - Hot & Cold

Product Code: 100.51.76.02

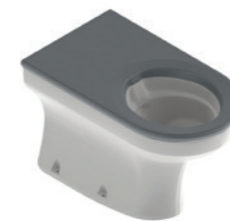


GalvinCare® CP-BS Lead Safe™ Ligature Resistant Shower Rose (300mm)

Product Code: 121.33.65.00

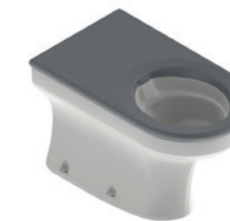
Toilet Pans & Buttons

Our range of Wallgate WC pans are made of vandal resistant, high-grade, solid surface material. We offer a wide selection of flush options for use in conjunction with our range of WC pans and urinals. These include mechanical, electronic and pneumatic activation.



Wallgate Ligature Resistant S/Surface Accessible Pan Covered with Integ Grey Seat 460x810mm

Product Code: 123.44.32.40



Wallgate Ligature Resistant S/Surface Ambulant Pan Covered with Integ Grey Seat 476x652mm

Product Code: 123.42.32.40



GalvinCare® SS Ligature Resistant Dual Flush Plate with Conical Buttons for Pneumatic Cistern

Product Code: 656514



GalvinCare® Ligature Resistant Electronic Ducted Dual Flush Pan Face Plate 24V AC

Product Code: 52483



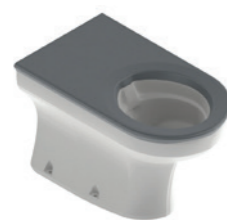
Wallgate Ligature Resistant Dual Flush Piezo Button WC with 4m Cables - Solid Wall (85-190mm Wall)

Product Code: PBA051-1-CWC



Wallgate Ligature Resistant WC Single Push Button for Pneumatic Cistern (25-190mm Wall)

Product Code: CIPB12-B



Wallgate Ligature Resistant S/Surface Pan Covered with Integ Grey Seat 446x702mm

Product Code: 123.41.32.40



Wallgate Ligature Resistant S/Surface Pan with Integ Grey Seat 445x523mm

Product Code: 123.40.12.40



Wallgate Electronic Activated Concealed Slimline Cistern

Product Code: CIST19-ELEC



Wallgate Pneumatic Activated Concealed Slimline Cistern

Product Code: CIST19-PNEU-2

Basins & Tapware

Our basins are made from highly robust solid surface material, which provides a more normalised appearance with ligature resistant and vandal resistant properties. There are recessed, wall mounted and basin mounted options available. All can be coupled with basin-activation options combined with our outlets and powerful water management systems.



Wallgate Ligature Resistant S/Surface Wall Basin with Integ Outlet & 2 Piezos - Rear Fixed

Product Code: 123.01.12.40



Wallgate Ligature Resistant S/Surface Wall Basin with Integ Outlet & Shelf - Front Fixed (LH/RH)

Product Code: 123.02.00.40, 123.02.10.40



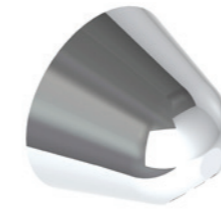
Wallgate Ligature Resistant S/Surface Wall Basin with Integ Outlet - Rear Fixed

Product Code: 123.01.10.40



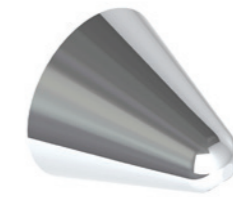
GalvinCare® CP-BS Lead Safe™ Ligature Resistant Basin Set Concealed Timeflow with Dome Outlet - 15 Sec

Product Code: 121.61.15.00



GalvinCare® CP-BS Lead Safe™ Ligature Resistant Wall Outlet 15 FI

Product Code: 121.41.40.00



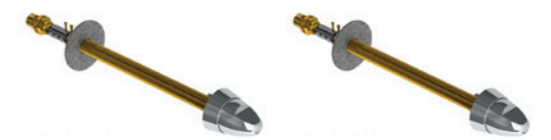
GalvinCare® CP-BS Lead Safe™ Ligature Resistant Wall Outlet 15 FI (110mm)

Product Code: 121.47.40.00



GalvinCare® CP-BS Lead Safe™ Ligature Resistant Multi-Grip Wall Top Assembly C/D

Product Code: 121.43.03.01, 121.43.03.02



GalvinCare® CP-BS Lead Safe™ Ligature Resistant Ezy-Grip Wall Top Assembly C/D (300mm) - Cold & Hot

Product Code: 121.42.03.01, 121.42.03.02



GalvinCare® Ligature Resistant Electronic Ducted Dual Temp Basin Face Plate 24V AC

Product Code: 52455



GalvinCare® Ligature Resistant Electronic Ducted Single Temp Basin Face Plate 24V AC

Product Code: 52441

Water Management Systems

Our electronic water management controllers have been designed to assist with cost savings, improved operational efficiency, and environmental sustainability through optimised water usage and reduced wastage. In addition, they can enhance security and safety, promote health and hygiene, and ensure compliance with regulations.



Wallgate Electronic Water / Power / Lighting Controller 2 Rooms / 8 Outlets

Product Code: 123.23.23.90



Wallgate NX Electronic Water Controller 1 Room / 4 Outlets Programmable

Product Code: 123.20.13.90, 123.20.23.90

Drains & Cleanouts

Our range of stainless steel floor drains and cleanouts feature robust, tamper-resistant construction to enhance safety and security in high-risk environments. Engineered with ligature resistant and vandal resistant features, they are designed to minimise the risk of harm and prevent the concealment of contraband.



GalvinCare® Polished SS316 Ligature Resistant Floor Drain Round 100 x 80BSP

Product Code: 303070X



GalvinCare® Polished SS316 Ligature Resistant Floor Drain Round Vinyl 100 x 80BSP

Product Code: 303077X



GalvinCare® Polished SS Ligature Resistant Floor Drain Round Vinyl 150 x 100BSP

Product Code: 303079X



Slip-Safe® SS Bolted Cleanout Round Vinyl 150 x 100 PVC/HDPE/CU Slip-In

Product Code: 69468X



Slip-Safe® SS316 Bolted Cleanout Round 150 x 100 PVC/HDPE/CU Slip-In

Product Code: 67790X

Accessories

Our solid surface accessories have been developed to complement our sanitaryware products. The anti-ligature accessories range includes: mirrors, shelves, toilet-roll holders, grab rails and other washroom products.



Wallgate Ligature Resistant Solid Surface Recessed Toilet Roll Holder

Product Code: TRH-04



Wallgate Ligature Resistant Solid Surface Toilet Roll Holder

Product Code: TRH-02W



Wallgate Ligature Resistant Solid Surface Shelf 235x100mm - Rear Fixed

Product Code: ALF-02W



Wallgate Ligature Resistant Solid Surface Shelf 470x140mm - Rear Fixed

Product Code: ALF-03W-BCA



GalvinCare® Ligature Resistant Single Robe/Towel Hook

Product Code: THK-01



GalvinCare® Ligature Resistant Double Robe/Towel Hook

Product Code: THK-02



GalvinCare® Powder Coated Ligature Resistant 90° Grab Rail 450x450mm (LH/RH)

Product Code: 42271, 42277



GalvinCare® Powder Coated MH Ligature Resistant Grab Rail 300mm (LH/RH)

Product Code: 42200, 42207



Wallgate Ligature Resistant Solid Surface Recessed Shower Shelf

Product Code: ALF-04



Wallgate Ligature Resistant Polycarb Mirror with Solid Surface Frame Rear Fixed 450x1010mm

Product Code: ALM-06W



GalvinCare® Powder Coated Ligature Resistant 30° Grab Rail 700x950mm (LH/RH)

Product Code: 42284, 42287



GalvinCare® Powder Coated Ligature Resistant Grab Rail 900mm (LH/RH)

Product Code: 42249, 42256



We design, manufacture
and supply safe,
green and smart water
solutions for high
risk and high care
environments.



1300 514 074



sales@galvinengineering.com.au



galvinengineering.com.au

- Australia
- New Zealand
- UK
- USA



© CliniMix, GalvinCare, Galvin Engineering, Slip-Safe. All rights reserved.
™ Lead Safe. © Galvin Engineering Pty Ltd

Whilst all reasonable care has been taken in compiling the information in this document, the designs, dimensions and products shown are indicative only and should not be relied upon without prior approval. Due to our policy of continuous development, we reserve the right to alter any details of specifications or products without notice. All information, drawings, technical specifications and product designs remains the property of Galvin Engineering Pty Ltd.

Galvin Engineering offers a range of ligature resistant, anti-ligature, vandal resistant, and anti-vandal products designed to reduce the risk of self-harm, suicide, or vandalism, but we cannot offer any guarantee that these events will not take place. Therefore, it is important to understand that installation of these products will not eliminate all risks.

When we use the terms ligature resistant and/or anti-ligature about our products, it means that we have designed and tested these products to reduce the risk of that product being used as a ligature attachment point. They will not protect or prevent injury when the risks were unknown to us at the time of the design of the products. They are not a replacement for professionals who are trained in the proper evaluation, management, and supervision of persons at risk of self-harm or suicide.

When we use the terms vandal resistant and/or anti-vandal about our products, it means that we have designed and tested these products to reduce the risk of that product being vandalised. They will not protect or prevent damage when the risks were unknown to us at the time of the design of the products.

Galvin Engineering recommends that designers, installers, facility managers, and anyone intending to rely on or use any products displayed in our literature or on our website, satisfy themselves about the suitability of the products for their intended use in the building design, and ensure they are being installed, used, and maintained in accordance with our instructions. Facility managers, clinicians, and carers need to ensure that reasonable steps are taken to reduce the accessibility of unnecessary ligatures to at-risk patients, confirm that adequate risk mitigation controls are in place, and make sure that applicable health, safety and patient care standards are being met.

Galvin Engineering makes no express or implied warranties regarding the ability of the product to prevent death or injury, to resist all ligature attachment, or to prevent vandalism. No responsibility is assumed by Galvin Engineering for any incidental or consequential damages resulting from the use of any products sold by Galvin Engineering. To the fullest extent permitted by law, Galvin Engineering excludes all liability for damage or injury to any person, damage to any property, and any indirect consequential claims, loss or damage.