



**ISSUE 1**  
**MARCH 2024**

**GalvinEngineering**  
*the mark of reliability*



**Water Solutions for a Healthier Environment**



# Corrections Facility Solutions



# Innovating the Corrections Industry in Australia: Overcoming Design Challenges for Modern Facilities

In the world of corrections, the design of facilities plays a crucial role in maintaining security, promoting rehabilitation, and ensuring the well-being of both staff and inmates.



## Design Challenges in the Corrections Industry

Designing correctional facilities requires a delicate balance between security, functionality, and aesthetics providing a normalised environment. The corrections industry in Australia faces numerous challenges in this regard:

- Ensuring the safety of both staff and inmates is of paramount importance. The design must incorporate robust security measures that prevent escapes, maintain order, and minimise risks. Additionally, the facilities must be flexible enough to accommodate varying levels of security requirements, from low to maximum security settings.
- Correctional facilities must promote the rehabilitation and reintegration of inmates. The design should facilitate educational and vocational programs, encourage positive behaviour, and create a supportive environment that aids in the inmates' successful re-entry into society. Achieving this delicate balance between security and rehabilitation poses a significant challenge that demands innovative design solutions.
- The well-being and comfort of both staff and inmates are vital factors. Correctional facilities should prioritize the provision of adequate natural light, ventilation, and hygienic conditions. Ensuring privacy, dignity, and accessibility within the facilities is crucial for promoting mental and physical well-being. However, achieving these objectives while adhering to stringent security requirements and cost-effectiveness presents unique design challenges.

## Designing Bathrooms for Correctional Facilities

Bathrooms in correctional facilities require special attention due to their critical role in maintaining hygiene, safety, and privacy. The challenges faced in bathroom design within this context are multi-faceted and demand careful consideration.

Security is the primary concern in correctional facility bathrooms. The design must minimise potential risks, such as hiding places or access to contraband. The selection of materials and fixtures must prioritise durability, tamper resistance, and ease of maintenance while ensuring they do not compromise safety.

Furthermore, maintaining hygienic conditions in correctional facility bathrooms is of utmost importance. Designers must focus on implementing appropriate ventilation systems, and efficient water management systems to minimise the risk of infection and promote cleanliness. Implementing an effective water management system can contribute to water conservation and empower the facility to regulate water consumption, thereby upholding rigorous environmental standards.

As the leading provider of water control solutions for the corrections industry in Australia, we understand the unique challenges faced by designers and facility owners in creating safe, efficient, and humane environments

## Our Mission and Design Principles

At Galvin Engineering, designing, manufacturing and supplying safe, green and smart water solutions for high risk and high care environments lies at the heart of what we do.

Galvin Specialised's unique range of products has been designed exclusively for correctional facilities and detention centres. Our range of innovative bathroom at-risk-patient protection products have been carefully selected from leading international manufacturers or locally manufactured in Australia. The suite of products is recognised as the most effective water control, anti-vandal and anti-ligature solutions available worldwide.

We are committed to providing market-leading products to suit every application and exclusively design and distribute a wide range of established products, and can modify, adapt, source or create a solution for your unique situation. The design of our products reflects a modern philosophy that promotes a safe but normalised environment assisting with well-being and rehabilitation. Strong emphasis is placed on designs that incorporate home like, non-institutional environments that imbue familiarity and a sense of being valued.

Our design guide addresses each of these key components and provides guidance on creating normalised, warm, and welcoming settings and structures at each of these levels, based on available evidence and best practices.



# Corrections Bathroom Solution

Choosing a full room solution for correctional facility washroom tapware and sanitaryware offers several benefits, including enhanced security and durability. With integrated features like tamper-proof faucets and vandal-resistant fixtures, it ensures a safer environment while reducing maintenance and replacement costs in high-demand settings.





## Shower Roses & Hoses

Our GalvinCare® shower roses and hoses incorporate innovative safety features that significantly reduce the risk of self-harm and prevents the concealment of contraband, making them an ideal choice for correctional facilities.



Wallgate Anti-Ligature Brushed SS Ceiling Mtd Shower with Removable Plate & Anti-Ligature Screws

**Product Code: SNC-02-AUS**



GalvinCare® CP-BS Lead Safe™ Mental Health Anti-Ligature Ceiling Mtd Shower Rose SS Plate

**Product Code: 121.70.10.00**



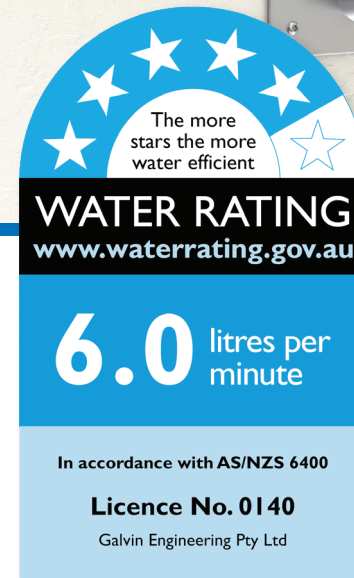
GalvinCare® CP-BS Lead Safe™ Mental Health Anti-Ligature Wall Mtd Shower Rose - 300mm Extension

**Product Code: 121.33.65.00**



GalvinCare® CP-BS Lead Safe™ Mental Health Anti-Ligature Wall Mtd Shower Rose - Standard

**Product Code: 121.33.64.00**



## GalvinCare®

CP-BS Mental Health Anti-Ligature Safe-Connect Shower Head with Hand Shower

**Product Code: 42020**

- AS/NZS 3718 approved.
- Anti-ligature and safe-connect designed shower head.
- High quality chrome finish for easy cleaning, added durability and hygiene maintenance.
- Utilises a quick-connect fitting for a safe and reliable shut off and easy attach and release.
- Enables assisted and unassisted showering.
- Simple installation, facilitated from the front of the wall.
- Dual action to choose a standard shower or a hand-held shower, and is easily diverted from one to another, without the use of a separate diverter.



# Shower Controllers

Our range of shower controllers, specifically designed for correctional facilities with anti-ligature and anti-vandal features, can significantly enhance safety and security by minimising the risk of ligature attachment points and preventing tampering or damage. These specialised shower controllers can help mitigate the risk of self-harm, vandalism, and other security concerns.



GalvinCare® Electronic Mental Health Anti-Ligature Concealed Ezy-Grip Shower Mixer

Product Code: 52406



Safe-Cell® CP-BS Lead Safe™ Prison Ezy-Grip Wall Top Assembly Complete C/D (Hot or Cold)

Product Code: 121.01.03.01 / 121.01.03.02



GalvinCare® CP-BS Lead Safe™ Mental Health Anti-Ligature Paddle Handle Wall Top Assembly 1/4 Turn C/D (Hot or Cold)

Product Code: 120.71.16.01 / 120.71.16.02



# Flowmatic®

Prison Ducted Low Pro Ezy-Grip Shower Mixer with Soap Holder 24V AC

Product Code: 52420

- Provide anti-vandal and anti-ligature solution.
- Electronic valve assembly for precise delivery of water
- Adjustable temperature control handle to allow users to adjust from a cold water option to the set hot water temperature.
- Face plate features push activation buttons.
- Plates have no front penetrations and are fixed from the duct.
- Specifically designed for prisons, mental health facilities and other custodial establishments.





# Toilet Pans

Our range of Wallgate WC pans are made of vandal-resistant, high-grade, solid surface material. We offer a wide selection of flush options for use in conjunction with our range of WC pans and urinals. These include mechanical, electronic and pneumatic activation.



Wallgate Anti-Ligature, Anti-Vandal Solid Surface Seatless Back to Wall WC Pan P Trap 425 x 511

**Product Code: CWC-150W-AUS**



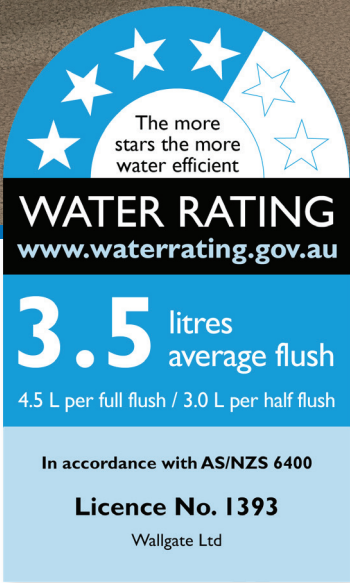
Wallgate Anti-Ligature, Anti-Vandal Accessible Solid Surface Back to Wall Pan S&P Trap with Integrated Grey Seat 460 x 810

**Product Code: CWC-155W-AST-BCA**



Wallgate Anti-Ligature, Anti-Vandal Solid Surface Ambulant Pan P Trap with Integrated Grey Seat 476 x 652

**Product Code: CWC-156W-AST-AMB**



# Wallgate

Anti-Ligature, Anti-Vandal Solid Surface Back To Wall Pan S&P Trap with Integrated Grey Seat 446 x 702

**Product Code: CWC-155W-AST-AUS**

- Anti-ligature design to reduce the potential for self-harm.
- Highly robust which prevents breakages.
- Shrouded waste (S and P trap compatible).
- Concealed through-wall services and fixings.
- WC pan made as one piece without joins.
- Highly polished finish for ease of cleaning.
- Easily renewable surface without a gel coat layer.
- Domestic appearance normalising the environment.
- Range of activation and control options available.



# Basins

Our basins are made from highly robust solid surface material, which provides a more normalised appearance with anti-ligature and anti-vandal properties. There are recessed, wall-mounted, corner-top and vanity-top options available. All can be coupled with basin-activation options combined with our outlets and powerful water management systems.



Wallgate Anti-Ligature, Anti-Vandal Solid Surface Basin with Dual Outlet & Piezo Activation

Product Code: WHB-200W-AUS



Wallgate Anti-Ligature, Anti-Vandal Solid Surface High Secure Basin with Single Outlet & No Piezo Activation

Product Code: ALS-181W-NB-AUS



Wallgate Solid Surface Corner Wash Basin  
LH Only

Product Code: CHB001



Products: WHB-201W-2-AUS, ALMF-01W, THK-02

## Wallgate

Anti-Ligature, Anti-Vandal Solid Surface Basin with Single Outlet & Piezo Activation

Product Code: WHB-201W-2-AUS

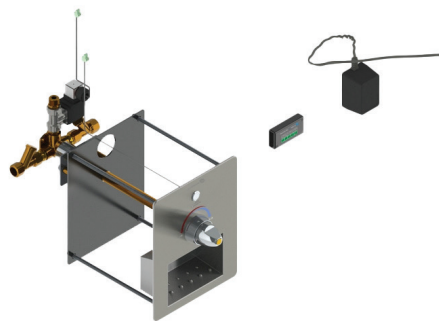
- Anti-ligature design assists in the prevention of self-harm.
- Electronic activation.
- Highly robust.
- Made as one piece without joins.
- Highly polished finish for ease of cleaning.
- Easily renewable surface without a gel coat layer.
- Normalises the environment.
- Range of control options available.
- Concealed through-wall services and fixings.





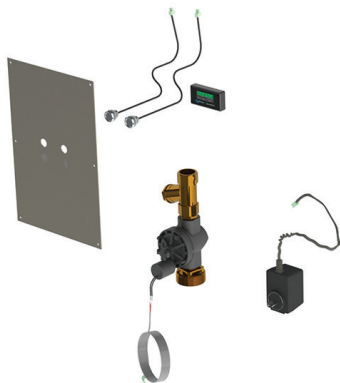
# Water Management Systems

Our electronic water management controllers have been designed to assist with cost savings, improved operational efficiency, and environmental sustainability through optimised water usage and reduced wastage. In addition, they can enhance security and safety, promote health and hygiene, and ensure compliance with regulations.



Safe-Cell® Electronic Ezy-Grip Shower Mixer with Soap Holder & Controller (Duct Mtd)

Product Code: TZ-FLOWTMSHWDT



Flowmatic® Concealed Inwall Dual Flush Pan Assembly for Mains Power with Controller

Product Code: TZ-FLOWTPANMAX



Flowmatic® Prison Ducted Face Plate for Dual Temperature Basin 24v AC

Product Code: 52455



Products: 123.20.13.90, 123.23.23.90

## Wallgate

### NX Electronic Water Controller 1 Room / 4 Outlets Programmable

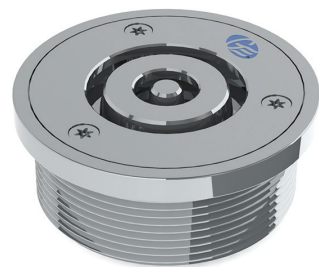
Product Code: 123.20.13.90

- Individual outlet or global setting capability.
- Provides evidence of all manual activation and automatic purge activity.
- Highly energy and water efficient.
- Prevents flooding and other abuse.
- Enables combination of activation sensors to be used.
- Outlets automatically close if power fails to prevent flooding.
- Easy navigation with the 3 inch LCD display.
- Scheduled purging and adjustable timings.
- Bluetooth® app for real-time controller access to remotely manage cycle periods, hygiene purging and room lockouts.



# Drains

Our range of polished stainless steel Safe-Cell® and Slip-Safel® floor drains and cleanouts have been designed to minimise the risk of suicide and prevent the concealment of contraband.



Safe-Cell® Polished SS316 (CRR) Prison Floor Drain Round 100 x 80 BSP

Product Code: 303070X



Slip-Safe® SS Bolted Cleanout Round Vinyl 150 x 100 PVC/HDPE/CU Slip-In

Product Code: 69468X



Slip-Safe® SS316 Bolted Cleanout Round 150 x 100 PVC/HDPE/CU Slip-In

Product Code: 67790X



Safe-Cell® SS Linear Drain 600mm with Flashing Flange and 50mm Centre Outlet

Product Code: 303090X **Coming Soon**



Product: 303077X

## Safe-Cell®

Polished SS316 (CRR) Prison Floor Drain Round Vinyl 100 x 80 BSP

Product Code: 303077X

- Specially designed to minimise self harm using a technique called the Crocodile Roll.
- Polished stainless-steel drains in a unique circular style with anti-ligature slot grate.
- Unique inbuilt design features to reduce the hiding of contraband in the drain.
- Maximum flow capabilities.
- All gullies supplied with security screwdriver bit to release the anti-ligature grating for cleaning.
- Suitable options available to be used with standard vinyl, epoxy, tile or concrete flooring.





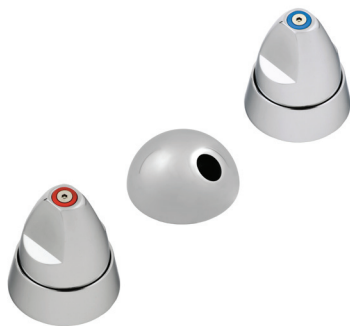
Combination Sets & Accessories

Our solid surface accessories have been developed to complement our sanitaryware products. The anti-ligature accessories range includes: mirrors, shelves, toilet-roll holders, grab rails and other washroom products.



Safe-Cell® CP-BS Prison Basin Set Concealed Timeflow with Dome Outlet - 15 Sec

Product Code: 50150



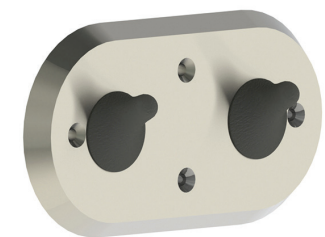
Safe-Cell® CP-BS Prison Ezy-Grip Basin Set Complete with High Flow Safe-Cell® Bubbler

Product Code: 50113C



Wallgate Anti-Ligature, Anti-Vandal Solid Surface Shelf Rear Fixed 470 x 140 - White

Product Code: ALF-03W-BCA



GalvinCare® Anti-Ligature Double Robe / Towel Hook

Product Code: THK-02



Wallgate Anti-Ligature Solid Surface Combined Mirror & Shelf 495 x 720 - White

Product Code: ALMF-01W



Wallgate Anti-Ligature, Anti-Vandal Polycarb Mirror with Solid Surface Surround 450 x 1010 - White

Product Code: ALM-06W



Wallgate Anti-Ligature, Anti-Vandal Recessed Shower Shelf Solid Surface - White

Product Code: ALF-04



Wallgate Anti-Ligature, Anti-Vandal Recessed Toilet Roll Holder Solid Surface - White

Product Code: TRH-04





We design, manufacture  
and supply safe,  
green and smart water  
solutions for high  
risk and high care  
environments.

1300 514 074  
sales@galvinengineering.com.au  
galvinengineering.com.au

- Australia
- New Zealand
- UK
- USA

® Flowmatic, GalvinCare, GalvinClear, Galvin Engineering, Galvin Specialised, Safe-Cell, Slip-Safe. All rights reserved.  
™ Lead Safe. © Galvin Engineering Pty Ltd



Whilst all reasonable care has been taken in compiling the information in this document, the designs, dimensions and products shown are indicative only and should not be relied upon without prior approval. Due to our policy of continuous development, we reserve the right to alter any details of specifications or products without notice. All information, drawings, technical specifications and product designs remains the property of Galvin Engineering Pty Ltd.

In the absence of a legal or industry definition of anti-ligature or ligature resistant products, when we use these terms, we are referring to products that are designed and manufactured with the intention of reducing the risk of ligature attachment to the product(s).

Galvin Engineering Pty Ltd will always endeavour to design and test our anti-ligature product(s) to reduce the risk of product ligature attachment that may result in serious injury or death. Whilst all reasonable measures are taken at the time of design, the anti-ligature design of the products are not intended to and will not: a. Replace protective measures that need to be taken in the specific circumstances of usage; b. Substitute the need for supervision of those who may be at risk; c. Protect and or prevent those at risk against any self-harm instances that may occur when installed; and d. Protect and or prevent injury when the risks were unknown to us at the time of the design of the product(s).

Galvin Engineering Pty Ltd does not offer and does not represent or warrant that any product(s) for sale are ligature-free. Therefore, Galvin Engineering will not be liable for any claims, loss, or damages arising from ligature attachment on our products. It is the purchaser's responsibility to ensure that products purchased and installed are suitable for the environments in which they are installed, and suitable supervision and protective measures are in place to protect those at risk.

