



**ISSUE 3**  
**JULY 2025**

**GalvinEngineering**  
*the mark of reliability*



**Water Solutions for a Healthier Environment**



# Corrections Facility Solutions

# Innovating the Corrections Industry in Australia: Overcoming Design Challenges for Modern Facilities

In the world of corrections, the design of facilities plays a crucial role in maintaining security, promoting rehabilitation, and ensuring the well-being of both staff and inmates.



## Design Challenges in the Corrections Industry

Designing correctional facilities requires a delicate balance between security, functionality, and aesthetics providing a normalised environment. The corrections industry in Australia faces numerous challenges in this regard:

- Ensuring the safety of both staff and inmates is of paramount importance. The design must incorporate robust security measures that prevent escapes, maintain order, and minimise risks. Additionally, the facilities must be flexible enough to accommodate varying levels of security requirements, from low to maximum security settings.
- Correctional facilities must promote the rehabilitation and reintegration of inmates. The design should facilitate educational and vocational programs, encourage positive behaviour, and create a supportive environment that aids in the inmates' successful re-entry into society. Achieving this delicate balance between security and rehabilitation poses a significant challenge that demands innovative design solutions.
- The well-being and comfort of both staff and inmates are vital factors. Correctional facilities should prioritize the provision of adequate natural light, ventilation, and hygienic conditions. Ensuring privacy, dignity, and accessibility within the facilities is crucial for promoting mental and physical well-being. However, achieving these objectives while adhering to stringent security requirements and cost-effectiveness presents unique design challenges.

## Designing Bathrooms for Correctional Facilities

Bathrooms in correctional facilities require special attention due to their critical role in maintaining hygiene, safety, and privacy. The challenges faced in bathroom design within this context are multi-faceted and demand careful consideration.

Security is the primary concern in correctional facility bathrooms. The design must minimise potential risks, such as hiding places or access to contraband. The selection of materials and fixtures must prioritise durability, tamper resistance, and ease of maintenance while ensuring they do not compromise safety.

Furthermore, maintaining hygienic conditions in correctional facility bathrooms is of utmost importance. Designers must focus on implementing appropriate ventilation systems, and efficient water management systems to minimise the risk of infection and promote cleanliness. Implementing an effective water management system can contribute to water conservation and empower the facility to regulate water consumption, thereby upholding rigorous environmental standards.

As the leading provider of water control solutions for the corrections industry in Australia, we understand the unique challenges faced by designers and facility owners in creating safe, efficient, and humane environments

## Our Mission and Design Principles

At Galvin Engineering, designing, manufacturing and supplying safe, green and smart water solutions for high risk and high care environments lies at the heart of what we do.

Galvin Specialised's unique range of products has been designed exclusively for correctional facilities and detention centres. Our range of innovative bathroom at-risk-patient protection products have been carefully selected from leading international manufacturers or locally manufactured in Australia. The suite of products is recognised as the most effective water control, anti-vandal and anti-ligature solutions available worldwide.

We are committed to providing market-leading products to suit every application and exclusively design and distribute a wide range of established products, and can modify, adapt, source or create a solution for your unique situation. The design of our products reflects a modern philosophy that promotes a safe but normalised environment assisting with well-being and rehabilitation. Strong emphasis is placed on designs that incorporate home like, non-institutional environments that imbue familiarity and a sense of being valued.

Our design guide addresses each of these key components and provides guidance on creating normalised, warm, and welcoming settings and structures at each of these levels, based on available evidence and best practices.

# Corrections Bathroom Solution

Choosing a full room solution for correctional facility washroom tapware and sanitaryware offers several benefits, including enhanced security and durability. With integrated features like tamper-proof faucets and vandal-resistant fixtures, it ensures a safer environment while reducing maintenance and replacement costs in high-demand settings.



# Showers & Controllers

Our GalvinCare® shower controllers, roses, and hoses are purpose-designed for correctional facilities, featuring anti-ligature and anti-vandal properties to enhance safety and security. These specialised components help reduce the risk of self-harm, prevent tampering and vandalism, and minimise opportunities for contraband concealment.



GalvinCare® CP-BS Lead Safe™ Anti-Ligature Shower Rose with 100mm Bolting Plate

Product Code: 121.35.64.00



GalvinCare® CP-BS Lead Safe™ Anti-Ligature Ceiling Mtd Shower Rose SS Plate

Product Code: 121.70.10.00



GalvinCare® Brushed SS304 Anti-Ligature Ceiling Mtd Shower with Removable Plate

Product Code: 121.70.62.11



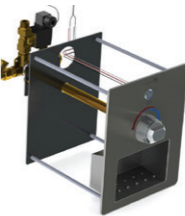
CliniMix® Lead Safe™ Inwall Thermostatic Progressive Mixer with GalvinCare® Handle - Warm & Cold

Product Code: 100.50.75.01



GalvinCare® Electronic Anti-Ligature Concealed Ezy-Grip Shower Mixer

Product Code: 52406



GalvinCare® Electronic Ducted Ezy-Grip Low Profile Shower Mixer with Soap Holder 24V AC

Product Code: 52420



GalvinCare® CP-BS Lead Safe™ Anti-Ligature Safe-Connect Shower Head & Hand Shower

Product Code: 121.36.64.92



GalvinCare® CP-BS Lead Safe™ Anti-Ligature Wall Mtd Shower Rose

Product Code: 121.33.64.00



CliniMix® CP-BS Lead Safe™ Duct Mtd Thermostatic Progressive Shower Mixer with Anti-Ligature Handle - Electronic

Product Code: 100.51.76.02



GalvinCare® CP-BS Lead Safe™ Mental Health Anti-Ligature Shower Rose (300mm)

Product Code: 121.33.65.00

# Toilet Pans & Buttons

Our range of Wallgate WC pans are made of vandal-resistant, high-grade, solid surface material. We offer a wide selection of flush options for use in conjunction with our range of WC pans and urinals. These include mechanical, electronic and pneumatic activation.



Wallgate Anti-Ligature, Anti-Vandal Solid Surface Accessible Pan S&P with Grey Integ Seat 460x810 - Rear Fixed  
**Product Code: CWC-155W-AST-BCA**



Wallgate Anti-Ligature, Anti-Vandal Solid Surface Ambulant Pan S&P with Grey Integ Seat 476x652 - Rear Fixed  
**Product Code: CWC-156W-AST-AMB**



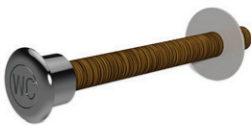
GalvinCare® Electronic Ducted Dual Flush Pan Face Plate 24V AC  
**Product Code: CWC-156W-AST-AMB**



GalvinCare® Electronic Ducted Dual Flush Pan Face Plate 24V AC  
**Product Code: 52483**



Wallgate Dual Flush Piezo Touch Button WC with 4m Cables to suit 85-190mm Wall  
**Product Code: PBA051-1-CWC**



Wallgate Secure WC Single Push Button for Pneumatic Cistern to Suit 25-190mm Wall  
**Product Code: CIPB12-B**



Wallgate Anti-Ligature, Anti-Vandal Solid Surface Pan S&P with Grey Integ Seat 446x702 - Rear Fixed  
**Product Code: CWC-155W-AST-AUS**



Wallgate Anti-Ligature, Anti-Vandal Solid Surface Pan P Trap with Grey Integ Seat 445x523 - Rear Fixed  
**Product Code: CWC-150W-AST-AUS**



Wallgate Electronic Activated Concealed Slim-line Cistern  
**Product Code: CIST19-ELEC**



Wallgate Pneumatic Activated Concealed Slimline Cistern  
**Product Code: CIST19-PNEU-2**

# Basins & Tapware

Our basins are made from highly robust solid surface material, which provides a more normalised appearance with anti-ligature and anti-vandal properties. There are recessed, wall-mounted, corner-top and vanity-top options available. All can be coupled with basin-activation options combined with our outlets and powerful water management systems.



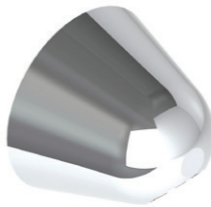
Wallgate Anti-Ligature, Anti-Vandal Solid Surface Basin with Single Outlet OTH

Product Code: WHB-181-NB-AUS



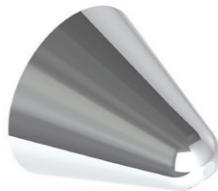
GalvinCare® CP-BS Lead Safe™ Basin Set Concealed Timeflow with Dome Outlet - 15 Sec

Product Code: 121.61.15.00



GalvinCare® CP-BS Lead Safe™ Anti-Ligature Wall Outlet 15 FI

Product Code: 121.41.40.00



GalvinCare® CP-BS Lead Safe™ Anti-Ligature Wall Outlet 15 FI (110mm)

Product Code: 121.47.40.00



GalvinCare® CP-BS Lead Safe™ Multi-Grip Wall Top Assembly C/D (300mm) - Cold & Hot

Product Code: 121.43.03.01, 121.43.03.02



GalvinCare® CP-BS Lead Safe™ Ezy-Grip Wall Top Assembly C/D (300mm) - Cold & Hot

Product Code: 121.42.03.01, 121.42.03.02



Wallgate Anti-Ligature, Anti-Vandal Solid Surface Basin with Single Outlet and 2x Piezo Activation

Product Code: WHB-201W-2-AUS



Wallgate Anti-Ligature, Anti-Vandal Solid Surface Pan P Trap with Grey Integ Seat 445x523 - Rear Fixed

Product Code: ALS-181W-2-AUS



GalvinCare® Electronic Ducted Dual Temp Basin Face Plate 24V AC

Product Code: 52455



GalvinCare® Electronic Ducted Single Temp Basin Face Plate 24V AC

Product Code: 52441

## Water Management Systems

Our electronic water management controllers have been designed to assist with cost savings, improved operational efficiency, and environmental sustainability through optimised water usage and reduced wastage. In addition, they can enhance security and safety, promote health and hygiene, and ensure compliance with regulations.



Wallgate Electronic Water / Power / Lighting Controller 2 Rooms / 8 Outlets

Product Code: 123.23.23.90



Wallgate NX Electronic Water Controller 1 Room / 4 Outlets Programmable

Product Code: 123.20.13.90, 123.20.23.90

## Drains & Cleanouts

Our range of stainless steel floor drains and cleanouts feature robust, tamper-resistant construction to enhance safety and security in high-risk environments. Engineered with anti-ligature and anti-vandal features, they are designed to minimise the risk of harm and prevent the concealment of contraband.



GalvinCare® Polished SS316 (CRR) Floor Drain Round 100 x 80BSP

Product Code: 303070X



GalvinCare® Polished SS316 (CRR) Floor Drain Round Vinyl 100 x 80BSP

Product Code: 303077X



GalvinCare® Polished SS (CRR) Floor Drain Round Vinyl 150 x 100BSP

Product Code: 303079X



Slip-Safe® SS Bolted Cleanout Round Vinyl 150 x 100 PVC/HDPE/CU Slip-In

Product Code: 69468X



Slip-Safe® SS316 Bolted Cleanout Round 150 x 100 PVC/HDPE/CU Slip-In

Product Code: 67790X

Accessories

Our solid surface accessories have been developed to complement our sanitaryware products. The anti-ligature accessories range includes: mirrors, shelves, toilet-roll holders, grab rails and other washroom products.



Wallgate Anti-Ligature, Anti-Vandal Solid Surface Recessed Toilet Roll Holder

Product Code: TRH-04



Wallgate Anti-Ligature, Anti-Vandal Solid Surface Toilet Roll Holder with Front Fixings

Product Code: TRH-02W



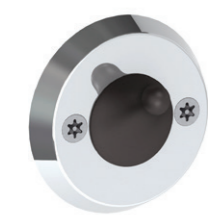
Wallgate Anti-Ligature, Anti-Vandal Solid Surface Shelf 235 x 100mm - Rear Fixed

Product Code: ALF-02W



Wallgate Anti-Ligature, Anti-Vandal Solid Surface Shelf 470 x 140mm - Rear Fixed

Product Code: ALF-03W-BCA



GalvinCare® Anti-Ligature Single Robe/Towel Hook

Product Code: THK-01



GalvinCare® Anti-Ligature Double Robe/Towel Hook

Product Code: THK-02



GalvinCare® Anti-Ligature 90° Grab Rail 700 x 950mm Powder Coated - Vert or Horiz (LH/RH)

Product Code: 42271, 42277



GalvinCare® Anti-Ligature Grab Rail 900mm Powder Coated - Vert or Horiz (LH/RH)

Product Code: 42249, 42256



Wallgate Anti-Ligature, Anti-Vandal Recessed Shower Shelf Solid Surface

Product Code: ALF-04



GalvinCare® Anti-Ligature Solid Surface Recessed Washroom Shelf 500 x 200 x 125mm

Product Code: 42100



GalvinCare® Anti-Ligature 30° Grab Rail 700 x 950mm Powder Coated - Vert or Horiz (LH/RH)

Product Code: 42284, 42287



Wallgate Anti-Ligature, Anti-Vandal Polycarb Mirror with Solid Surface Surround 450 x 1010mm - Rear Fixed

Product Code: ALM-06W

We design, manufacture  
and supply safe,  
green and smart water  
solutions for high  
risk and high care  
environments.

1300 514 074  
sales@galvinengineering.com.au  
galvinengineering.com.au

- Australia
- New Zealand
- UK
- USA

® Flowmatic, GalvinCare, GalvinClear, Galvin Engineering, Galvin Specialised, Safe-Cell, Slip-Safe. All rights reserved.  
™ Lead Safe. © Galvin Engineering Pty Ltd



**A family  
owned  
Australian  
business**

Whilst all reasonable care has been taken in compiling the information in this document, the designs, dimensions and products shown are indicative only and should not be relied upon without prior approval. Due to our policy of continuous development, we reserve the right to alter any details of specifications or products without notice. All information, drawings, technical specifications and product designs remains the property of Galvin Engineering Pty Ltd.

In the absence of a legal or industry definition of anti-ligature or ligature resistant products, when we use these terms, we are referring to products that are designed and manufactured with the intention of reducing the risk of ligature attachment to the product(s).

Galvin Engineering Pty Ltd will always endeavour to design and test our anti-ligature product(s) to reduce the risk of product ligature attachment that may result in serious injury or death. Whilst all reasonable measures are taken at the time of design, the anti-ligature design of the products are not intended to and will not: a. Replace protective measures that need to be taken in the specific circumstances of usage; b. Substitute the need for supervision of those who may be at risk; c. Protect and or prevent those at risk against any self-harm instances that may occur when installed; and d. Protect and or prevent injury when the risks were unknown to us at the time of the design of the product(s).

Galvin Engineering Pty Ltd does not offer and does not represent or warrant that any product(s) for sale are ligature-free. Therefore, Galvin Engineering will not be liable for any claims, loss, or damages arising from ligature attachment on our products. It is the purchaser's responsibility to ensure that products purchased and installed are suitable for the environments in which they are installed, and suitable supervision and protective measures are in place to protect those at risk.