

**ISSUE 4**  
APRIL 2026

**galvin**

Water Solutions for a Healthier Environment



**Education  
Solutions**

---

Well-designed schools can improve **learning outcomes, health and wellbeing.**



Besides improving comfort for students and staff, they can also help to reduce the impacts of both the urban heat-island effect and greenhouse gas emissions.

Schools should be designed to minimise the consumption of energy, water and natural resources and to reduce waste. They should

also be durable and resilient while at the same time optimise health, safety, and security through pleasant and engaging spaces.

Having provided solutions for the education sector for more than half a century, we understand all the needs and offer an extensive range of specifically designed products.

## Easy to use

For our taps and bubblers, you can choose from self-closing (cam action, lever action or push button handles) or fully automated options (sensor activation).

## Safe

While all our products are safe and compliant with the stringent Australian Standards we wanted to provide you with the choice to future-proof your project by offering NCC 2022 compliant Lead Safe™ DZR and stainless steel options for your taps and bubbler selection. Additionally, our rubber mouthguard offers protection for children's teeth and their health alike thanks to its unique design and highly fungal and bacteria resistant material.

We are also offering revolutionary anti-microbial germ-shield® coated handle options for optimal protection.\*

*\*for selected products only - please contact us or go to [galvinengineering.com.au/germ-shield](http://galvinengineering.com.au/germ-shield) for more information*



## Hardwearing and vandal-resistant

Our products are designed to be vandal-resistant and use robust materials like chrome plated DZR, stainless steel, epoxy or polyester powder coating, and nitrile rubber compounds that are proven to withstand the test of time, and heavy-duty usage in laboratory environments or Australia's harsh outdoors.

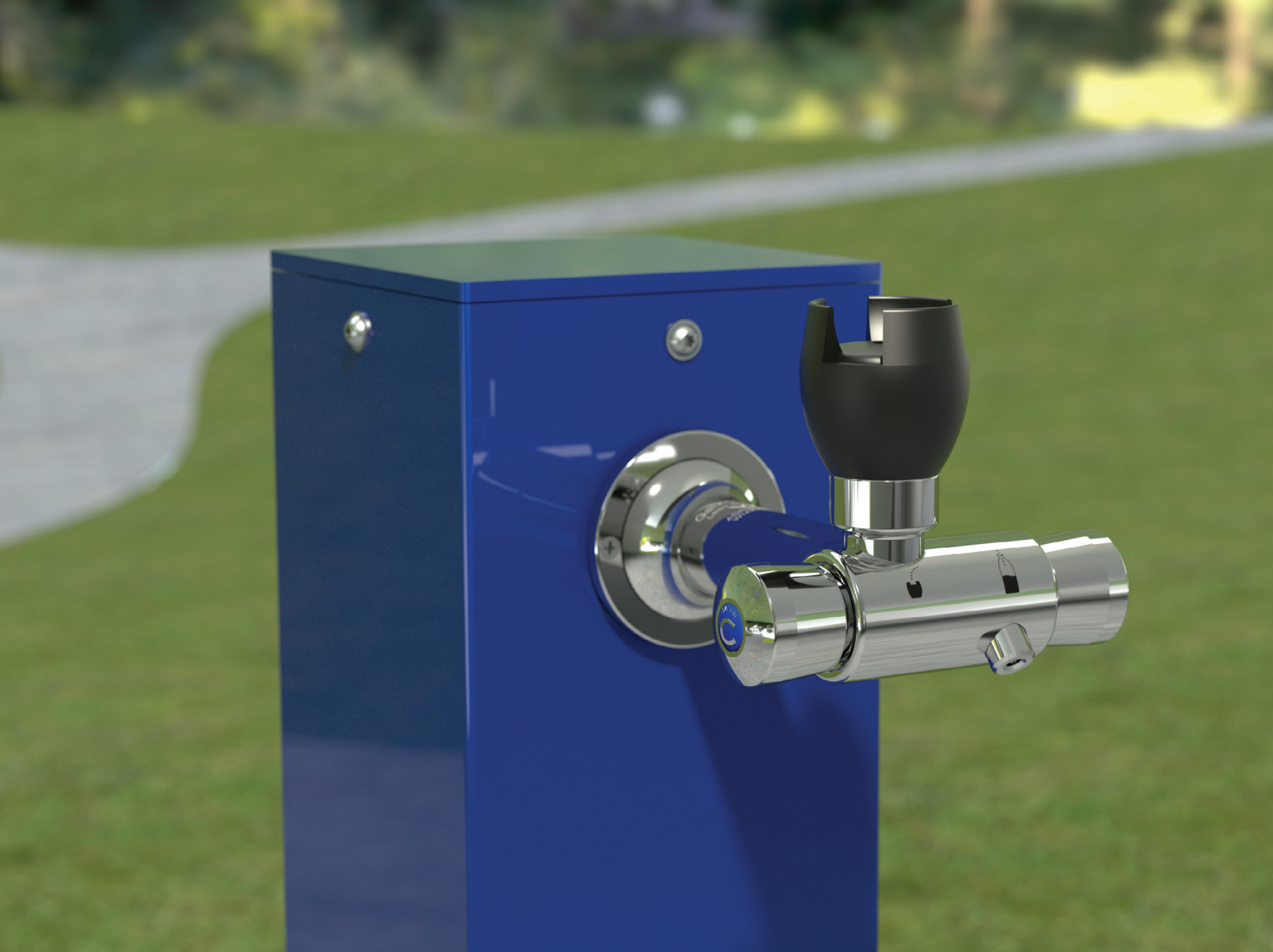
## Water-conserving

Using water efficiently has always been at the forefront of our product developments. Depending on your requirements you can choose from self-closing or sensor activated products with timeflow or timed shut-off options. Compliant with AS/NZS 3718 our products are WaterMark and WELS approved (where applicable).

## Full Room Solutions

We can cater for all your needs in areas such as amenities, laboratories, kitchens, bathrooms and outdoor areas.

Discover our indoor and outdoor product offering on the following pages or head to our website for our comprehensive full room solutions. For a customised solution for your next education project, or to get your spec updated please contact us at [www.galvinengineering.com.au/contact-us](http://www.galvinengineering.com.au/contact-us).



## Drinking Tapware

Reliable and hardwearing, our drinking bubblers and bottle fillers are the perfect choice for an internal or external school environment. Offering a selection of handles and activation mechanisms, our product range not only assists in infection control through handsfree operation, but also ensures efficient water use.





Ezy-Drink® CP-BS Lead Safe™ Hob Mtd Bottle Filler - MI (RH)

**Product Codes: 170.13.36.00**



Ezy-Drink® CP-BS Lead Safe™ Hob Mtd Bottle Filler with Reduced Flange - MI (RH)

**Product Codes: 170.13.33.00**



Ezy-Drink® CP-BS Lead Safe™ Wall Mtd Push Button Bottle Filler

**Product Code: 170.53.13.00**



Ezy-Drink® CP-BS Lead Safe™ Wall Mtd Lever Action Bottle Filler

**Product Codes: 170.53.14.00**



Ezy-Drink® CP Lead Safe™ Hob Mtd 2 in 1 Bottle Filler & Bubbler

**Product Code: 170.00.13.00**



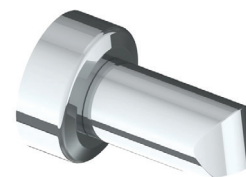
Ezy-Drink® CP Lead Safe™ 90° Wall Mtd 2 in 1 Bottle Filler

**Product Codes: 170.01.13.00**



Ezy-Drink® CP Lead Safe™ 45° Wall Mtd 2 in 1 Bottle Filler

**Product Codes: 170.02.13.00**



Ezy-Drink® CP-BS Lead Safe™ Wall Mtd Bottle Filler Outlet 60mm Reach

**Product Code: 170.53.10.00**



Ezy-Drink® CP Lead Safe™ Vertical Push Button Drinking Bubbler - MI (LH/RH)

**Product Codes: 170.11.23.01 (LH), 170.11.33.01 (RH)**



Ezy-Drink® CP Lead Safe™ Vertical Push Button Drinking Bubbler - FI (RH)

**Product Code: 170.21.33.01**



Ezy-Drink® Lead Safe™ Vertical Cam Action Drinking Bubbler - MI (LH/RH)

**Product Codes: 170.11.25.01 (LH), 170.11.35.01 (RH)**



Ezy-Drink® CP Lead Safe™ Vertical Lever Action Drinking Bubbler - MI (LH/RH)

**Product Codes: 170.11.24.00 (LH), 170.11.34.00 (RH)**



Ezy-Drink® CP-BS Lead Safe™ Horizontal Push Button Drinking Bubbler - FI

**Product Code: 170.50.13.01**



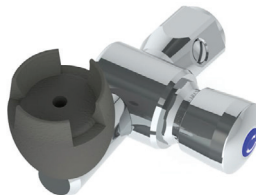
Ezy-Drink® CP-BS Lead Safe™ Horizontal Cam Action Drinking Bubbler - FI

**Product Code: 170.50.15.01**



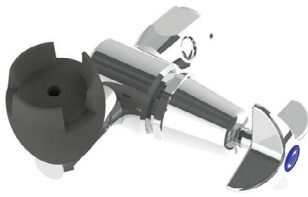
Ezy-Drink® CP-BS Lead Safe™ Horizontal Lever Action Drinking Bubbler Tap - FI

**Product Code: 170.50.14.00**



Ezy-Drink® CP-BS Lead Safe™ 45° Horizontal Push Button Drinking Bubbler - FI

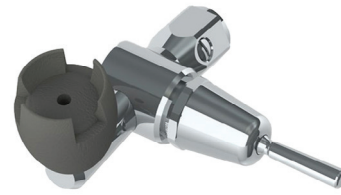
**Product Code: 170.58.13.01**



Ezy-Drink® CP-BS Lead Safe™ 45° Horizontal  
Cam Action Drinking Bubbler - FI

**Product Code: 170.58.15.01**

---



Ezy-Drink® CP-BS Lead Safe™ 45° Horizontal  
Lever Action Drinking Bubbler - FI

**Product Code: 170.58.14.00**

---



Ezy-Drink® CP-BS Lead Safe™ 45° Push Button  
Drinking Bubbler with Metal Mouthguard - FI

**Product Code: 170.52.13.01**

---



Ezy-Drink® CP-BS Lead Safe™ 45° Cam Action  
Drinking Bubbler with Metal Mouthguard - FI

**Product Code: 170.52.15.01**

---



Ezy-Drink® CP-BS Lead Safe™ 45° Lever Action  
Drinking Bubbler with Metal Mouthguard - FI

**Product Code: 170.52.14.00**

---



Ezy-Drink® CP-BS Lead Safe™ Mini Push  
Button Drinking Bubbler - MI

**Product Code: 170.10.43.01**

---



Ezy-Drink® CP-BS Lead Safe™ Remote Push  
Button Drinking Bubbler - FI

**Product Codes: 170.81.13.01**

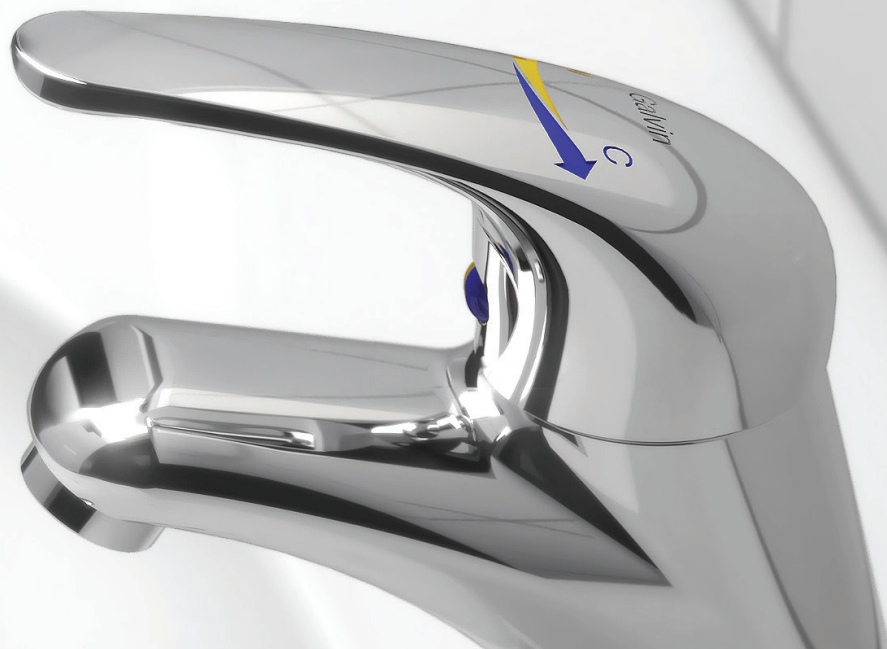
---



Ezy-Drink® CP-BS Lead Safe™ Remote Cam  
Action Drinking Bubbler - FI

**Product Code: 170.81.15.01**

---



## General Tapware

We offer a wide range of taps, mixers and accessories for sinks and showers so you can choose the option that is best suited to your needs and environment. Select from cam action, lever action, push button, sensor activated. The product range not only assists in infection control through handsfree operation but also ensures efficient water use.





Ezy-Push® CP-BS Lead Safe™ Timeflow Push Button Deluxe Bib Tap - MI (6/15 Sec)

**Product Codes: 173.46.21.00 (6s), 173.46.41.00 (15s)**

---



Ezy-Lever CP-BS Lead Safe™ Timeflow Lever Action Vandal Resistant Deluxe Bib Tap

**Product Code: 173.46.23.00**

---



Ezy-Push® CP-BS Lead Safe™ Timeflow Push Button Pillar Tap (6/15 Sec)

**Product Codes: 173.15.21.00 (6s), 173.15.41.00 (15s)**

---



Ezy-Lever CP-BS Lead Safe™ Timeflow Lever Action Vandal Resistant Pillar Tap

**Product Code: 170.50.13.01**

---



Ezy-Push® SS316 Lead Safe™ Timeflow Push Button Deluxe Bib Tap - MI (6 Sec)

**Product Code: 368667X**

---



Ezy-Push® SS316 Lead Safe™ Timeflow Push Button Pillar Tap - MI (6 Sec)

**Product Code: 368696X**

---



CliniMix® Lead Safe™ Hob Mtd Thermostatic Progressive Basin Mixer with Lever

**Product Code: 100.00.71.00**

---



Flowmatic® Lead Safe™ Hob Basin Tap without Temp Mixing (Battery/Mains)

**Product Codes: 151.10.22.00 (B), 151.10.12.00 (M)**

---



GalvinAssist® CP Lead Safe™ Basin Mixer with Short Pin Handle H&C

**Product Code: 113.42.31.03**

---



GalvinAssist® CP Lead Safe™ Basin Mixer with Long Pin Handle H&C - Black

**Product Code: 113.42.41.03**

---



CliniLever® CP-BS Lead Safe™ Single Lever Basin Mixer H&C

**Product Code: 103.00.72.03**

---



CliniLever® CP-BS Lead Safe™ Single Lever Basin Mixer H&C

**Product Code: 103.00.73.00**

---



CliniLever® CP-BS Lead Safe™ Single Lever Basin Mixer W&C

**Product Code: 103.00.72.04**

---



CliniLever® CP-BS Lead Safe™ Single Lever Basin Mixer with 165mm Accessible Lever

**Product Code: 103.00.73.04**

---



CliniLever® SS Lead Safe™ Basin Mixer H&C

**Product Code: TM-BASX**

---



CliniLever® SS Lead Safe™ Basin Mixer with Accessible Lever H&C

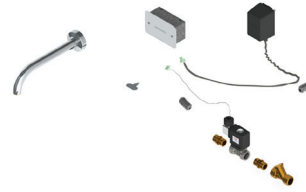
**Product Code: TM-BASXD**

---



Flowmatic® Lead Safe™ Flamingo Hob Basin Tap without Temp Mixing (Battery/Mains)

**Product Code: 151.12.12.00 (B), 151.11.12.00 (M)**



Flowmatic® Lead Safe™ Concealed Sensor Face Plate & CliniLever® Fixed Wall Outlet 225

**Product Code: 150.63.11.00**



CliniLever® Lead Safe™ Sink Mixer

**Product Codes: TM-SNKX (SS), 103.01.72.00 (CB-BS)**



CliniLever® Lead Safe™ Sink Mixer with Accessible Lever

**Product Codes: TM-SNKXD (SS), TM-SNKCPD (CB-BS)**



CliniLever® Lead Safe™ Gooseneck Sink Mixer

**Product Code: TM-SNKGX**



GalvinAssist® CP Lead Safe™ Gooseneck Sink Mixer with Short Pin Handle H&C - Black

**Product Code: 113.40.31.03**



Ezy-Wash® CP-BS Lead Safe™ Hob Single Lever Pre-Rinse Unit Type 150 Flex Tail (Std/Pot Filler)

**Product Codes: 181.01.56.00 (Std), 181.01.56.03 (Pot)**



Ezy-Wash® CP-BS Lead Safe™ Hob Twin Mixer Pre-Rinse Unit Type 100 Flex Tail (Std/Pot Filler)

**Product Codes: 181.03.35.00 (Std), 181.03.35.03 (Pot)**



Vandal Resistant CP-BS Lead Safe™ J/V  
Deluxe Bib Tap with Aerator MI - Cold (NSW)

**Product Codes: 174.41.22.01**

---



Vandal Resistant CP-BS Lead Safe™ J/V  
Deluxe Bib Tap with Aerater - Cold/Hot

**Product Code: 174.41.12.01 (C), 174.41.12.02 (H)**

---



Vandal Resistant CP-BS Lead Safe™ J/V Pillar  
Tap with Aerator - Cold (NSW)

**Product Codes: 174.12.22.01**

---



Vandal Resistant CP-BS Lead Safe™ J/V Hose  
Tap - Cold

**Product Code: 174.42.02.01**

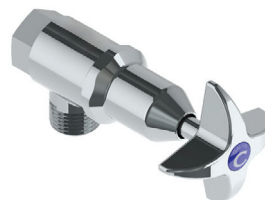
---



Vandal Resistant CP-BS Lead Safe™ J/V  
Washing Machine Tap - Hot/Cold

**Product Code: 174.03.02.01 (C), 174.03.02.02 (H)**

---



Vandal Resistant CP-BS Lead Safe™ J/V  
Cistern Tap - Cold

**Product Code: 174.05.02.01**

---



Vandal Resistant CP-BS Lead Safe™ J/V Hob  
Sink Set with Aerator

**Product Codes: 174.23.12.03**

---



Vandal Resistant CP-BS Lead Safe™ J/V Basin  
Set with Aerator (NSW)

**Product Codes: 174.31.22.03**

---



Vandal Resistant CP-BS Lead Safe™ J/V Hob Sink Set 200 Reach Gooseneck Spout & Aerator (NSW)

**Product Code: 174.22.22.03**

---



CliniLever® CP-BS Lead Safe™ J/V Hob Sink Set Swivel Gooseneck & 150mm Levers

**Product Code: 102.15.11.03**

---



Vandal Resistant CP-BS Lead Safe™ J/V Wall Sink Set 150H Swivel Gooseneck & Aerator (NSW)

**Product Code: 174.51.22.03**

---



Vandal Resistant CP-BS Lead Safe™ J/V Wall Sink Set 180H Swivel Gooseneck & Aerator (NSW)

**Product Code: 174.52.22.03**

---



Vandal Resistant CP-BS Lead Safe™ Wall Sink Set with Swivel Upswept Outlet

**Product Code: 174.55.42.03**

---



Vandal Resistant CP-BS Lead Safe™ J/V Wall Sink Set with 165 Fixed Spout & Aerator (NSW)

**Product Codes: 174.54.22.03**

---



GalvinCare® CP-BS Lead Safe™ Vandal Resistant Shower Set J/V

**Product Code: 174.61.02.03**

---



GalvinCare® CP-BS Lead Safe™ Vandal Resistant Ezy-Grip Shower Set C/D

**Product Code: 121.51.13.03**

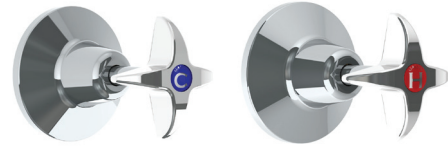
---



GalvinCare® CP-BS Lead Safe™ Ligature Resistant Wall Mtd Shower Rose

**Product Code: 121.33.64.00**

---



Vandal Resistant CP Lead Safe™ J/V Wall Top Assembly (Cold/Hot)

**Product Codes: 174.01.02.01(C), 174.01.02.02(H)**

---



CliniLever® CP-BS Fixed Shower Arm and Rose

**Product Code: 42008**

---



CliniLever® CP-BS Single Lever Shower Mixer with 165mm Accessible Lever

**Product Code: TM-SHWCPD**

---



CliniLever® CP Single Lever Shower Mixer

**Product Codes: TM-SHWCP**

---



GalvinAssist® Hand Shower Kit with 900 x 32mm SS Hygienic Grab Rail

**Product Code: 41999**

---



GalvinAssist® Hand Shower with 900 x 32mm SS Hygienic Grab Rail & ClevaCare® Shower

**Product Code: 41978**

---



GalvinAssist® Hand Shower with Inverted T 700 x 1100mm SS Hygienic Grab Rail (Centre)

**Product Code: 41978**

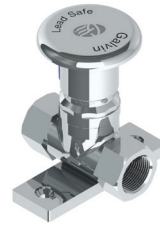
---



CP-BS Lead Safe™ Knee Operated Timeflow Valve with Regulator, Spout & Connection Kit

**Product Code: 173.61.46.00**

---



Ezy-Push® CP-BS Lead Safe™ Push Button Foot Valve 90° Mount

**Product Code: 172.62.43.00**

---



Ezy-Push® CP-BS Lead Safe™ Timeflow Push Button Wall Valve with Regulator - Adjustable

**Product Code: 173.61.55.00**

---



Ezy-Lever CP-BS Lead Safe™ Timeflow Knee Operated Valve with Regulator (15sec)

**Product Code: 173.61.44.00**

---



## Sanitaryware

Our sanitaryware range includes toilets, urinals, flush plates, basins and grab rails. Combining durable construction with thoughtful design, each element supports hygiene, accessibility and long-term performance. With a focus on water efficiency and maintenance, the range delivers reliable, compliant solutions without compromising functionality or aesthetics.





Ifo Sign 6820 Junior Toilet 4.5L / 3L Dual Flush with Soft-Close Seat, S-Trap - White

**Product Code: 682001809**

---



Ifo Spira 6261 Toilet with Ifo Double Flap Soft Close Seat

**Product Code: 108.00.03.00**

---



GalvinAssist® Wall Faced, Clean Flush, Easy Care Ambulant Toilet Suite with Soft Close Seat

**Product Codes: 105.10.20.00**

---



GalvinAssist® Wall Faced, Clean Flush, Easy Care, Toilet Pan with Soft Close Seat

**Product Codes: 105.11.20.00**

---



GalvinAssist® Wall Faced, Clean Flush, Easy Care Accessible Toilet Suite with Blue Seat

**Product Code: 105.10.10.01**

---



GalvinAssist® Wall Faced, Clean Flush, Easy Care Accessible Toilet Suite with Blue Seat

**Product Code: 105.11.10.01**

---



GalvinAssist® Close Coupled, Clean Flush, Easy Care Toilet Suite with S-Trap

**Product Code: 105.10.00.03**

---



Wallgate andal Resistant Solid Surface Urinal with Through-Wall Concealed Services

**Product Code: CWU-01W**

---



GalvinAssist® Slim Design Inwall Cistern, Less Flush Plate

**Product Codes: 105.94.00.00**

---



Flowmatic® Automatic Flusher Ceiling/Wall Mtd for Urinal 15 24v AC

**Product Code: TZ-FLOWFLUS**

---



GalvinAssist® CP, Accessible Dual Flush Plate, Pneumatic Push to Suit Inwall Cistern

**Product Code: 105.96.00.00**

---



GalvinAssist® CP, Dual Flush Plate, Pneumatic Push to Suit Inwall Cistern

**Product Code: 105.95.00.00**

---



Kolo Rekord Wall Basin 50cm without Overflow (0TH/TH)

**Product Codes: K91451000 (0TH), K91450000 (1TH)**

---



Kolo Rekord Wall Basin 60cm Type B without Overflow (0TH/TH)

**Product Codes: K91461000 (0TH), K91460000 (1TH)**

---



GalvinAssist® Accessible 600mm Wall Mount Basin, LH Bowl with Overflow (1TH/3TH)

**Product Codes: 105.33.10.01 (1TH), 105.33.10.03 (3TH)**

---



GalvinAssist® Accessible 600mm Wall Mount Basin, RH Bowl with Overflow (1TH/3TH)

**Product Codes: 105.33.11.01 (1TH), 105.33.11.03 (3TH)**

---



GalvinAssist® Plati Square, Wall or Above Counter Mount Basin with Overflow (1TH)

**Product Code: 105.32.12.01**

---



GalvinAssist® Ultra-Compact, Wall Mount Basin with Overflow (1TH)

**Product Code: 105.32.13.01**

---



GalvinAssist® Wall Mount Basin 500mm with Overflow (1TH/3TH)

**Product Codes: 105.32.10.01 (1TH), 105.32.10.03 (3TH)**

---



GalvinAssist® Semi Recessed Basin 500mm with Overflow (1TH/3TH)

**Product Codes: 105.36.01.01 (1TH), 105.36.01.01 (3TH)**

---



GalvinAssist® Angled 700 x 450mm Grab Rail (LH/RH)

**Product Codes: 105.05.03.31 (LH), 105.05.05.41 (RH)**

---



GalvinAssist® Angled 960 x 600mm Grab Rail (LH/RH)

**Product Codes: 105.08.09.31 (LH), 105.08.09.41 (RH)**

---



GalvinAssist® Straight Grab Rail Stainless Steel (300mm - 900mm)

**Product Codes: 105.00.00.01, 105.00.03.01, 105.00.09.01**

---



GalvinAssist® PWD Backrest

**Product Code: 105.76.02.01**

---



## Laboratory Tapware & Gas Outlets

Our AS/NZS 3718 approved laboratory tapware and AS 4617 AGA certified gas outlets are specifically designed to be used in a school laboratory environment. They feature tough vandal resistant handles with a unique locking system for additional safety, and a comprehensive range of interchangeable nozzles for flexible use. Every tap is quality tested and can be ordered in a satin chrome plated finish or chemical resistant epoxy coating to suit your environment.





GalvinLab® CP-BS Lead Safe™ Lab Set 1-Way  
Type 16 Upswept Swivel J/V #1 Aerator (RH)

**Product Code: 167.16.42.00**



GalvinLab® CP-BS Lead Safe™ Lab Set 1-Way  
Type 16 DPW Fixed J/V #8 Aerator (RH)

**Product Code: 167.16.32.00**



GalvinLab® CP-BS Lead Safe™ Lab Set 1-Way  
Type 16 Fixed J/V #1 Aerator (RH)

**Product Code: 167.16.22.00**



GalvinLab® CP-BS Lead Safe™ Lab Set 1-Way  
Type 16 Fixed J/V #16XT Tube Nozzle (LH/RH)

**Product Codes: 167.16.27.00 (LH), 167.16.21.00 (RH)**



GalvinLab® CP-BS Lead Safe™ Lab Set 1-Way  
Type 16 Swivel J/V #16XT Tube Nozzle (RH)

**Product Code: 167.16.11.00**



GalvinLab® CP-BS Lead Safe™ Lab Set 1-Way  
Type 16 Swivel J/V #1 Aerator (RH)

**Product Code: 167.16.12.00**



GalvinLab® CP-BS Lead Safe™ Lab Set 1-Way  
Type 16 DPW Fixed J/V #8 Aerator (LH/RH)

**Product Codes: 167.16.33.00 (LH), 167.16.32.00 (RH)**



GalvinLab® CP-BS Lead Safe™ Lab Set 1-Way  
Type 16 Fixed J/V Lever Handle Tube Nozzle  
(LH/RH)

**Product Codes: 167.16.27.01 (LH), 167.16.21.01 (RH)**



GalvinLab® CP-BS Lead Safe™ Lab Set H&C  
Mixing Unit Type 13 Swivel J/V #1 Aerator

**Product Code: 167.13.12.00**



GalvinLab® CP-BS Lead Safe™ Lab Set H&C  
Mixing Unit Type 13 Swivel J/V #16XT Tube  
Nozzle

**Product Code: 167.13.11.00**



GalvinLab® CP-BS Lead Safe™ Lab Set H&C  
Mixing Unit Type 19 Swivel J/V #1 Aerator

**Product Code: 167.19.12.00**



GalvinLab® CP-BS Lead Safe™ Lab Set H&C  
Mixing Unit Type 19 Swivel J/V #16XT Tube  
Nozzle

**Product Code: 167.19.11.00**



GalvinLab® CP-BS Lead Safe™ Lab Set 3-Way  
Type 7 Fixed J/V #1 Aerator & #16XT Tube  
Nozzles

**Product Code: 167.07.20.00**



GalvinLab® CP-BS Lead Safe™ Lab Set H&C  
Mixing Unit Type 14 J/V #1 Aerator #16XT Tube  
Nozzles (Fixed/Swivel)

**Product Codes: 167.14.20.00 (F), 167.14.11.00 (S)**



GalvinLab® CP-BS Lab Set 2 Way Type 8  
Swivel J/V #16XT Tube Nozzle

**Product Code: 167.08.11.00**



GalvinLab® CP-BS Lead Safe™ Lab Set 1-Way  
Right Angle Valve Type 17 Fixed J/V #16XT  
Tube Nozzle

**Product Code: 167.17.21.00**



GalvinLab® CP-BS Lab 1-Way Straight Gas Turret Type 37

**Product Code: TG37C**

---



GalvinLab® CP-BS Lab 2-Way Straight Gas Turret Type 39 - 180°

**Product Code: TG39C**

---



GalvinLab® CP-BS Lab 2-Way Right Angle Gas Turret Type 39 - 180°

**Product Code: TG39RAC**

---



GalvinLab® CP-BS Lab 2-Way Straight Gas Turret Type 40 - 90°

**Product Code: TG40C**

---



GalvinLab® CP-BS Lab 2-Way Right Angle Gas Turret Type 40 - 90°

**Product Code: TG40RAC**

---



GalvinLab® CP-BS Lab 2-Way Right Angle Gas Turret Type 40 DPW 90° with Non-Return Valve

**Product Code: TG40.DRAC**

---



GalvinLab® CP-BS Lab 3-Way Straight Gas Turret Type 41

**Product Code: TG41C**

---



GalvinLab® CP-BS Lab 4-Way Straight Gas Turret Type 42

**Product Code: TG42C**

---



## Safety Showers & Eye Washes

The GalvinSafe® emergency decontamination equipment is our latest commitment to improve the health and safety of our global community by providing customer focused safety, and tempering solutions.





GalvinSafe® Combi Shower with ABS Eye/Face Wash - Hand Activation

**Product Code: 190.80.10.12**

---



GalvinSafe® Combi Shower with ABS Eye/Face Wash - Hand & Foot Activation

**Product Code: 190.80.10.90**

---



GalvinSafe® Free Standing Drench Shower with Pull Rod & ABS Shower

**Product Code: 190.81.12.32**

---



GalvinSafe® Drench Shower with Pull Rod & ABS Shower

**Product Code: 105.10.00.03**

---



GalvinSafe® Pedestal Eye/Face Wash Head with SS Bowl - Hand Activation

**Product Code: 190.82.11.12**

---



GalvinSafe® Pedestal Eye/Face Wash Head with SS Bowl Hand - Foot Activation

**Product Code: 190.82.11.9**

---



GalvinSafe® Eye/Face Was with SS Bowl - Hand Activation

**Product Code: 190.42.11.12**

---



GalvinSafe® Eye/Face Wash with SS Bowl & Body Spray - Hand Activation

**Product Code: 190.42.11.90**

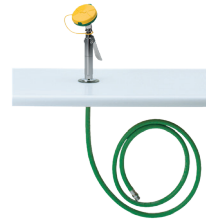
---



GalvinSafe® Eye/Face Wash Hand Held, Eyewash Head & 3.6mtr Recoil Hose

**Product Code: 190.42.65.32**

---



GalvinSafe® Eye/Face Wash, Hob Mtd, Hand Held, Eyewash Head

**Product Code: 190.12.55.32**

---



GalvinSafe® Body Spray, Wall Mtd, Hand Held, 2.4mtr Pressure Hose

**Product Code: 190.43.55.32**

---



GalvinSafe® Foot Treadle to Suit Floor Mtd Units

**Product Code: 190.91.22.12**

---



GalvinSafe® Safety Sign for Emergency Eye Wash - 270 x 200mm

**Product Code: 190.91.12.32**

---



GalvinSafe® Safety Sign for Emergency Shower & Eye Wash - 270 x 200mm

**Product Code: 190.91.10.32**

---



GalvinSafe® Shower & Eye Wash Testing Kit, ANSI Compliant

**Product Code: 190.95.90.90**

---



GalvinSafe® Waterproof Test Record Tags - Pack 25

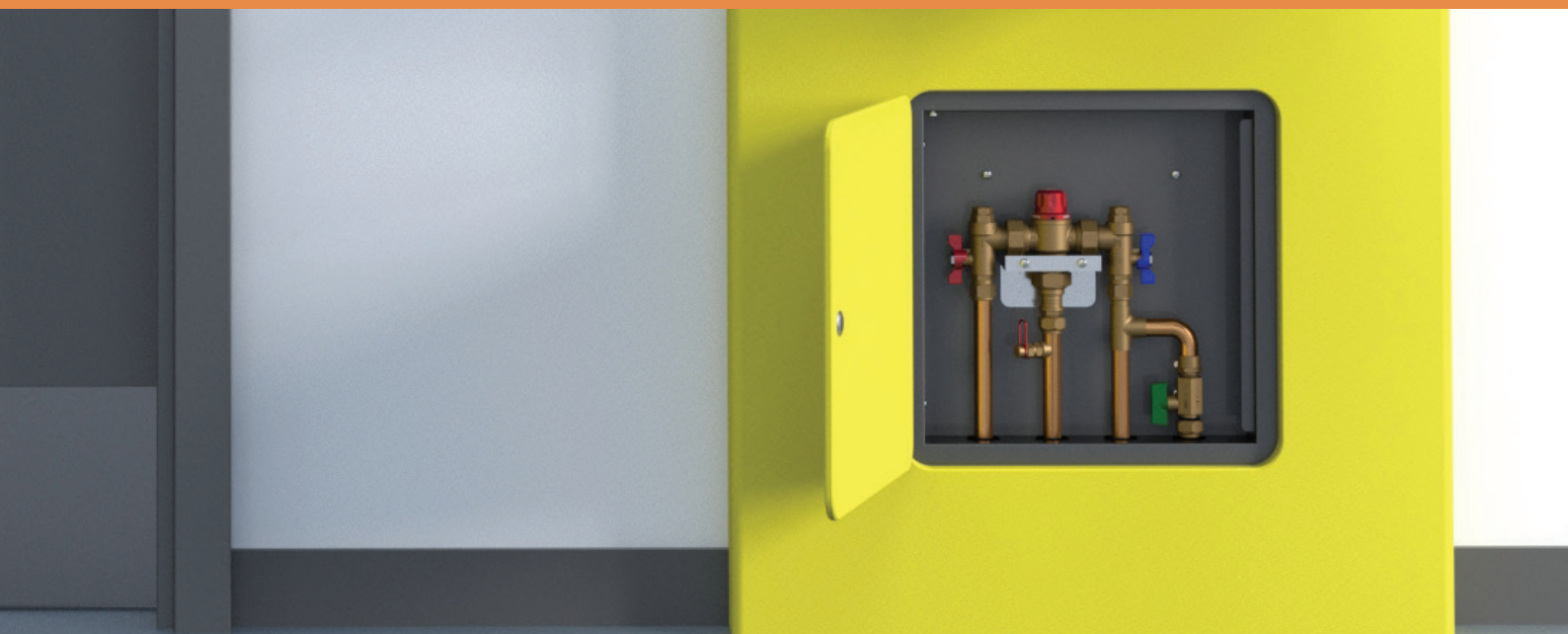
**Product Code: 190.91.80.33**

---



## Thermostatic Mixing Valves

A wide variety of AS 4032.4 approved thermostatic mixing valves, give you precise control over the delivery of water, enabling the prevention of scalding and cold water shock by providing tempered water to the desired outlets, in compliance with relevant Australian Standards.





CliniMix® 1500 Lead Safe™ Thermostatic Mixing Valve

**Product Code: 201.70.11.09**

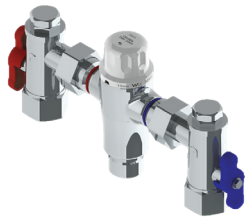
---



CliniMix® Mini Lead Safe™ 1/2" Thermostatic Mixing Valve

**Product Code: 201.71.00.00**

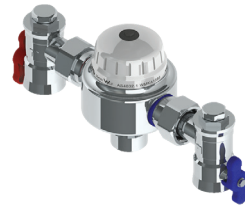
---



CliniMix® 2000 Lead Safe™ 3/4" Thermostatic Mixing Valve

**Product Code: 201.70.02.00**

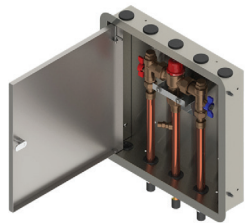
---



CliniMix® 2500 Lead Safe™ Thermostatic Mixing Valve

**Product Code: 201.70.03.00**

---



CliniMix® 1500 Lead Safe™ Thermostatic Mixing Valve in Cabinet

**Product Code: 201.10.70.10**

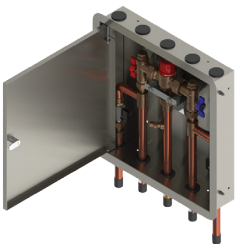
---



CliniMix® 1500 Lead Safe™ Thermostatic Mixing Valve with Cold Bypass in Cabinet

**Product Code: 201.11.70.10**

---



CliniMix® Lead Safe™ TMV 5-Year Upgrade/Service Kit

**Product Code: 201.13.70.10**

---



CliniMix® Lead Safe™ TMV 5-Year Upgrade/Service Kit

**Product Code: 201.79.10.09**

---

# galvin

We design, manufacture and supply safe, green and smart water solutions for high risk and high care



1300 514 074



sales@galvinengineering.com.au



galvinengineering.com.au

- Australia
- New Zealand
- UK

© CliniLever, Ezy-Drink, Ezy-Push, GalvinCare, GalvinClear, Galvin Engineering, GalvinLab, GalvinSafe, Galvin Specialised. All rights reserved. ™ Lead Safe © Galvin Engineering Pty Ltd

Whilst all reasonable care has been taken in compiling the information in this document, the designs, dimensions and products shown are indicative only and should not be relied upon without prior approval. Due to our policy of continuous development, we reserve the right to alter any details of specifications or products without notice. All information, drawings, technical specifications and product designs remain the property of Galvin Engineering Pty Ltd.



A family owned Australian business

