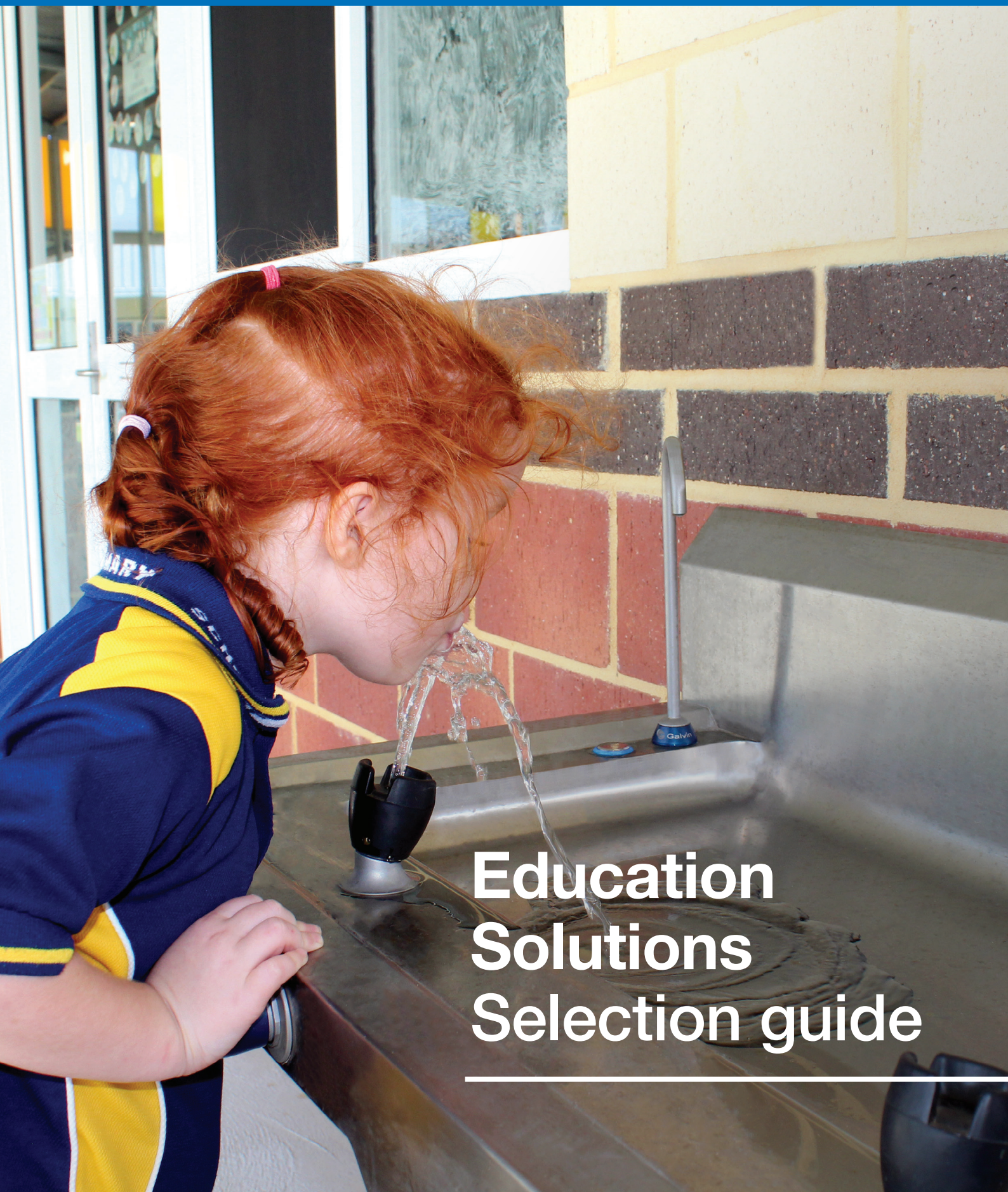


ISSUE 4
JULY 2025

Water Solutions for a Healthier Environment



Education Solutions Selection guide

Well-designed schools can improve learning outcomes, health and wellbeing.

Besides improving comfort for students and staff, they can also help to reduce the impacts of both the urban heat-island effect and greenhouse gas emissions.

Schools should be designed to minimise the consumption of energy, water and natural resources and to reduce waste. They should

also be durable and resilient while at the same time optimise health, safety, and security through pleasant and engaging spaces.

Having provided solutions for the education sector for more than half a century, we understand all the needs and offer an extensive range of specifically designed products.

Easy to use

For our taps and bubblers, you can choose from self-closing (cam action, lever action or push button handles) or fully automated options (sensor activation).

Safe

While all our products are safe and compliant with the stringent Australian Standards we wanted to provide you with the choice to future-proof your project by offering NCC 2022 compliant Lead Safe™ DZR and stainless steel options for your taps and bubbler selection. Additionally, our rubber mouthguard offers protection for children's teeth and their health alike thanks to its unique design and highly fungal and bacteria resistant material.

We are also offering revolutionary anti-microbial germ-shield® coated handle options for optimal protection.*

*for selected products only - please contact us or go to galvinengineering.com.au/germ-shield for more information



Hardwearing and vandal-resistant

Our products are designed to be vandal-resistant and use robust materials like chrome plated DZR, stainless steel, epoxy or polyester powder coating, and nitrile rubber compounds that are proven to withstand the test of time, and heavy-duty usage in laboratory environments or Australia's harsh outdoors.

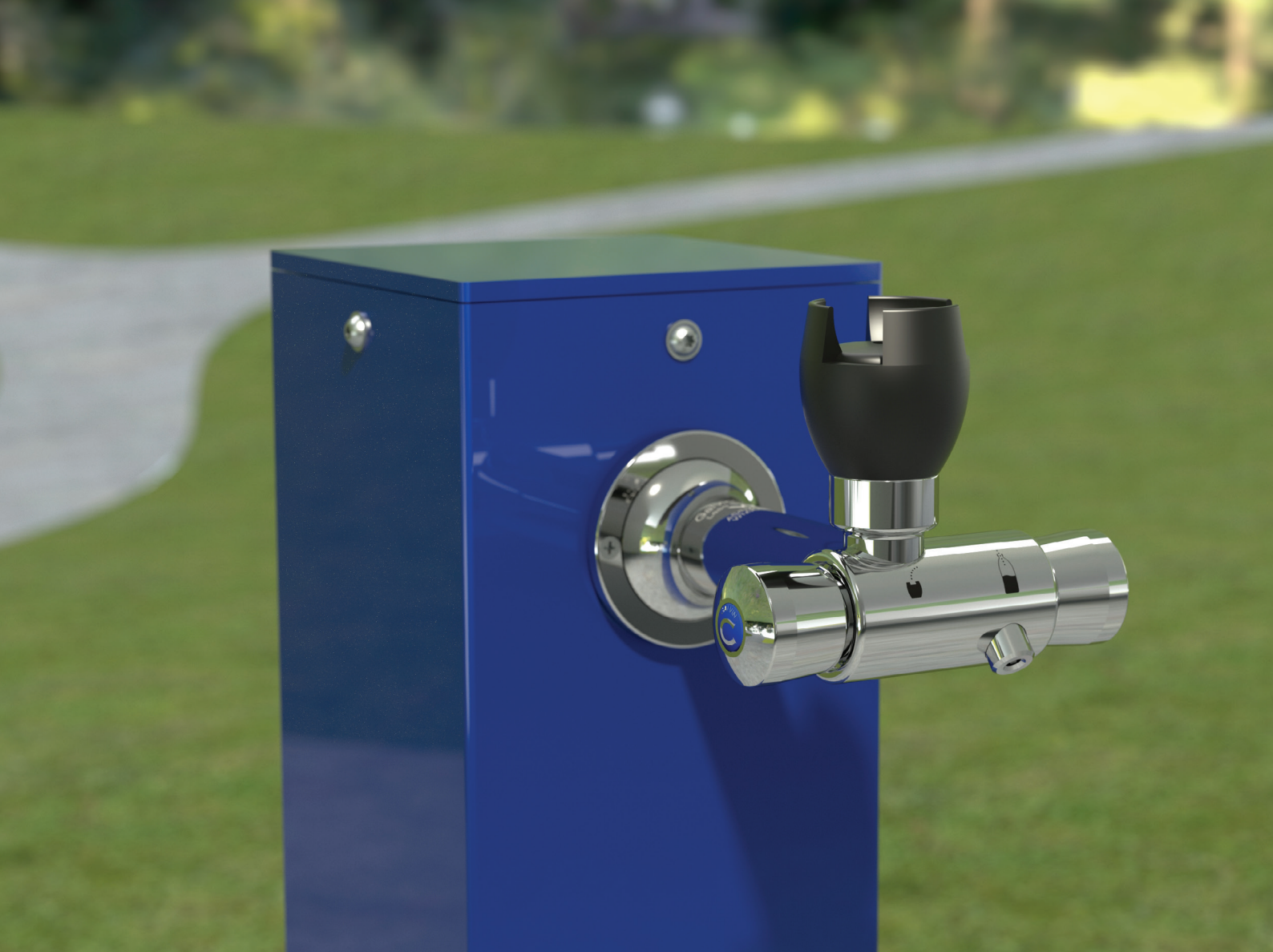
Water-conserving

Using water efficiently has always been at the forefront of our product developments. Depending on your requirements you can choose from self-closing or sensor activated products with timeflow or timed shut-off options. Compliant with AS/NZS 3718 our products are WaterMark and WELS approved (where applicable).

Full Room Solutions

We can cater for all your needs in areas such as amenities, laboratories, kitchens, bathrooms and outdoor areas.

Discover our indoor and outdoor product offering on the following pages or head to our website for our comprehensive full room solutions. For a customised solution for your next education project, or to get your spec updated please contact us at www.galvinengineering.com.au/contact-us.



Drinking Tapware

Reliable and hardwearing, our drinking bubblers and bottle fillers are the perfect choice for an internal or external school environment. Offering a selection of handles and activation mechanisms, our product range not only assists in infection control through handsfree operation, but also ensures efficient water use.



Ezy-Drink® CP-BS Lead Safe™ Hob Mtd Bottle Filler - MI (RH)

Product Codes: 170.13.36.00



Ezy-Drink® CP-BS Lead Safe™ Hob Mtd Bottle Filler with Reduced Flange - MI (RH)

Product Codes: 170.13.36.00, 170.13.33.00



Ezy-Drink® CP-BS Lead Safe™ Wall Mtd Push Button Bottle Filler

Product Code: 170.53.13.00



Ezy-Drink® CP-BS Lead Safe™ Wall Mtd Lever Action Bottle Filler

Product Codes: 170.53.14.00 (CB-BS)



Ezy-Drink® CP Lead Safe™ Hob Mtd 2 in 1 Bottle Filler & Bubbler

Product Code: 170.00.13.00



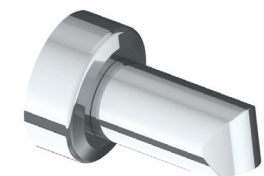
Ezy-Drink® CP Lead Safe™ 90° Wall Mtd 2 in 1 Bottle Filler

Product Codes: 170.01.13.00



Ezy-Drink® CP Lead Safe™ 45° Wall Mtd 2 in 1 Bottle Filler

Product Codes: 170.02.13.00



Ezy-Drink® CP-BS Lead Safe™ Wall Mtd Bottle Filler Outlet 60mm Reach

Product Code: 170.53.10.00



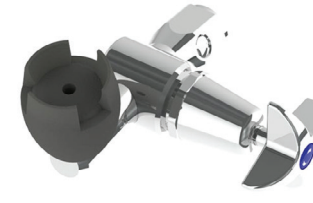
Ezy-Drink® CP Lead Safe™ Vertical Push Button Drinking Bubbler - MI (LH/RH)

Product Codes: 170.11.23.01 (LH), 170.11.33.01 (RH)



Ezy-Drink® CP Lead Safe™ Vertical Push Button Drinking Bubbler Tap - FI (RH)

Product Code: 170.21.33.01



Ezy-Drink® CP-BS Lead Safe™ 45° Horizontal Cam Action Drinking Bubbler - FI

Product Code: 170.58.15.01



Ezy-Drink® CP-BS Lead Safe™ 45° Horizontal Lever Action Drinking Bubbler - FI

Product Code: 170.58.14.00



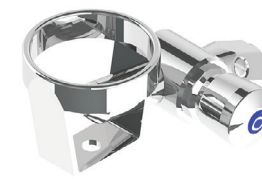
Ezy-Drink® Lead Safe™ Vertical Cam Action Drinking Bubbler - MI (LH/RH)

Product Codes: 170.11.25.01 (LH), 170.11.35.01 (RH)



Ezy-Drink® CP Lead Safe™ Vertical Lever Action Drinking Bubbler - MI (LH/RH)

Product Codes: 170.11.24.00 (LH), 170.11.34.00 (RH)



Ezy-Drink® CP-BS Lead Safe™ 45° Push Button Drinking Bubbler with Metal Mouthguard - FI

Product Code: 170.52.13.01



Ezy-Drink® CP-BS Lead Safe™ 45° Cam Action Drinking Bubbler with Metal Mouthguard - FI

Product Code: 170.52.15.01



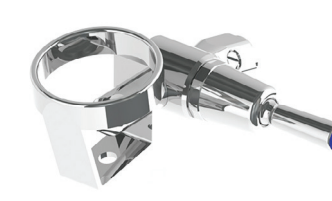
Ezy-Drink® CP-BS Lead Safe™ Horizontal Push Button Drinking Bubbler - FI

Product Code: 170.50.13.01



Ezy-Drink® CP-BS Lead Safe™ Horizontal Cam Action Drinking Bubbler - FI

Product Code: 170.50.15.01



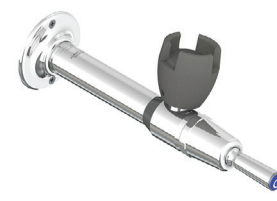
Ezy-Drink® CP-BS Lead Safe™ 45° Lever Action Drinking Bubbler with Metal Mouthguard - FI

Product Code: 170.52.14.00



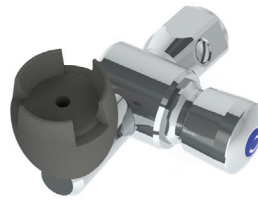
Ezy-Drink® CP-BS Lead Safe™ Mini Push Button Drinking Bubbler - MI

Product Code: 170.10.43.01



Ezy-Drink® CP-BS Lead Safe™ Horizontal Lever Action Drinking Bubbler Tap - FI

Product Code: 170.50.14.00



Ezy-Drink® CP-BS Lead Safe™ 45° Horizontal Push Button Drinking Bubbler - FI

Product Code: 170.58.13.01



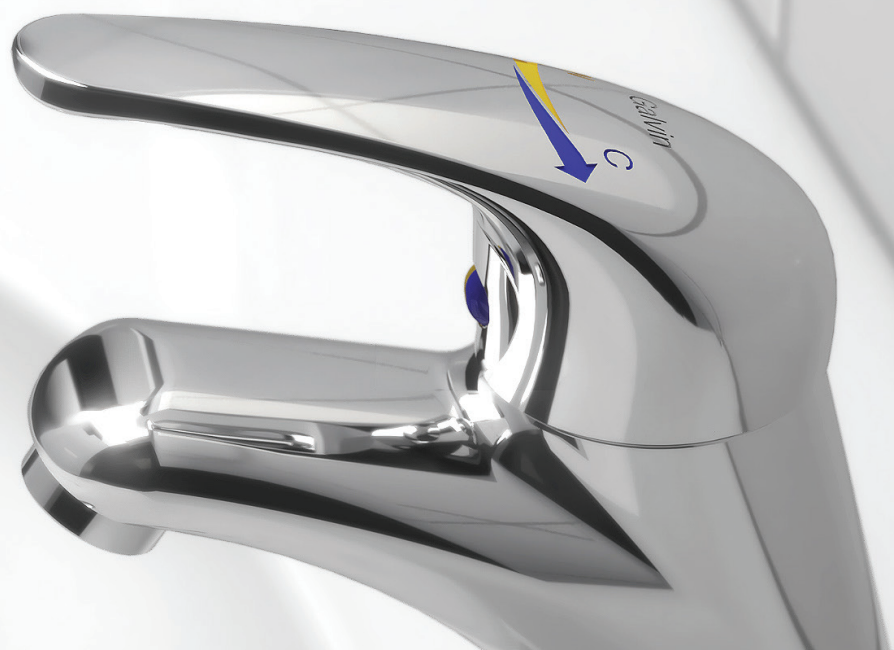
Ezy-Drink® CP-BS Lead Safe™ Remote Push Button Drinking Bubbler - FI

Product Codes: 170.81.13.01



Ezy-Drink® CP-BS Lead Safe™ Remote Cam Action Drinking Bubbler - FI

Product Code: 170.81.15.01



General Tapware

We offer a wide range of taps, mixers and accessories for sinks and showers so you can choose the option that is best suited to your needs and environment. Select from cam action, lever action, push button, sensor activated. The product range not only assists in infection control through handsfree operation but also ensures efficient water use.



Ezy-Push® CP-BS Lead Safe™ Timeflow Push Button Deluxe Bib Tap - MI (6/15 Sec)

Product Codes: 173.46.21.00 (6s), 173.46.41.00 (15s)



Ezy-Lever CP-BS Lead Safe™ Timeflow Lever Action Vandal Resistant Deluxe Bib Tap

Product Code: 173.46.23.00



Ezy-Push® CP-BS Lead Safe™ Timeflow Push Button Pillar Tap (6/15 Sec)

Product Codes: 173.15.21.00 (6s), 173.15.41.00 (15s)



Ezy-Lever CP-BS Lead Safe™ Timeflow Lever Action Vandal Resistant Pillar Tap

Product Code: 170.50.13.01



Ezy-Push® SS316 Lead Safe™ Timeflow Push Button Deluxe Bib Tap - MI (6 Sec)

Product Code: 368667X



Ezy-Push® SS316 Lead Safe™ Timeflow Push Button Pillar Tap - MI (6 Sec)

Product Code: 368696X



CliniMix® Lead Safe™ Hob Mtd Thermostatic Progressive Basin Mixer with Lever

Product Code: 100.00.71.00



Flowmatic® Lead Safe™ Hob Basin Tap without Temp Mixing (Battery/Mains)

Product Codes: 151.10.22.00 (B), 151.10.12.00 (M)





GalvinAssist® CP Lead Safe™ Basin Mixer with Short Pin Handle H&C

Product Code: 113.42.31.03



GalvinAssist® CP Lead Safe™ Basin Mixer with Long Pin Handle H&C - Black

Product Code: 113.42.41.03



Flowmatic® Lead Safe™ Flamingo Hob Basin Tap without Temp Mixing (Battery/Mains)

Product Code: 151.12.12.00 (B), 151.11.12.00 (M)



Flowmatic® Lead Safe™ Concealed Sensor Face Plate & CliniLever® Fixed Wall Outlet 225

Product Code: 150.63.11.00



CliniLever® CP-BS Lead Safe™ Single Lever Basin Mixer (Hot/Cold)

Product Code: 103.00.72.03



CliniLever® CP-BS Lead Safe™ Single Lever Basin Mixer (Hot/Cold)

Product Code: 103.00.73.00



CliniLever® Lead Safe™ Sink Mixer

Product Codes: TM-SNKX (SS), 103.01.72.00 (CB-BS)



CliniLever® Lead Safe™ Sink Mixer with Accessible Lever

Product Codes: TM-SNKXD (SS), TM-SNKCPD (CB-BS)



CliniLever® CP-BS Lead Safe™ Single Lever Basin Mixer (Warm/Cold)

Product Code: 103.00.72.04



CliniLever® CP-BS Lead Safe™ Single Lever Basin Mixer with 165mm Accessible Lever

Product Code: 103.00.73.04



CliniLever® Lead Safe™ Gooseneck Sink Mixer

Product Code: TM-SNKGX



GalvinAssist® CP Lead Safe™ Gooseneck Sink Mixer with Short Pin Handle H&C - Black

Product Code: 113.40.31.03



CliniLever® SS Lead Safe™ Basin Mixer (Hot/Cold)

Product Code: TM-BASX



CliniLever® SS Lead Safe™ Basin Mixer with Accessible Lever (Hot/Cold)

Product Code: TM-BASXD



Ezy-Wash® CP-BS Lead Safe™ Hob Single Lever Pre-Rinse Unit Type 150 Flex-Tail (Std/Pot Filler)

Product Codes: 181.01.56.00 (Std), 181.01.56.03 (Pot)



Ezy-Wash® CP-BS Lead Safe™ Hob Twin Mixer Pre-Rinse Unit Type 100 Flex Tail (Std/Pot Filler)

Product Codes: 181.03.35.00 (Std), 181.03.35.03 (Pot)



Vandal Resistant CP-BS Lead Safe™ J/V
Deluxe Bib Tap (NSW) with 8LMP Aerator (Cold)

Product Codes: 174.41.22.01



Vandal Resistant CP-BS Lead Safe™ J/V Pillar
Tap (NSW) with 8LPM Aerator (Cold)

Product Codes: 174.12.22.01



Vandal Resistant CP-BS J/V Washing Machine
Tap (Cold/Hot)

Product Code: 49920 (C), 49924 (H)



Vandal Resistant CP-BS Lead Safe™ J/V Hob
Sink Set with Aerator

Product Codes: 174.23.12.03



Vandal Resistant CP-BS Lead Safe™ J/V
Deluxe Bib Tap with Aerater (Cold/Hot)

Product Code: 174.41.12.01 (C), 174.41.12.02 (H)



Vandal Resistant CP-BS Lead Safe™ J/V Hose
Tap (Cold)

Product Code: 174.42.02.01



Vandal Resistant CP-BS Lead Safe™ J/V
Cistern Tap (Cold)

Product Code: 174.05.02.01



Vandal Resistant CP-BS Lead Safe™ J/V Basin
Set with Aerator (NSW)

Product Codes: 174.31.22.03



Vandal Resistant CP-BS Lead Safe™ J/V Hob Sink
Set 200 Reach Gooseneck Spout & Aerator (NSW)

Product Code: 174.22.22.03



Vandal Resistant CP-BS Lead Safe™ J/V Wall
Sink Set 150H Swivel Gooseneck & Aerator (NSW)

Product Code: 174.51.22.03



Vandal Resistant CP-BS Lead Safe™ Wall Sink
Set with Swivel Upswept Outlet

Product Code: 174.55.42.03



GalvinCare® CP-BS Lead Safe™ Vandal
Resistant Shower Set J/V

Product Code: 174.61.02.03



CliniLever® CP-BS Lead Safe™ J/V Hob Sink
Set Swivel Gooseneck & 150 Lever

Product Code: 102.15.11.03



Vandal Resistant CP-BS Lead Safe™ J/V Wall
Sink Set 180H Swivel Gooseneck & Aerator (NSW)

Product Code: 174.52.22.03



Vandal Resistant CP-BS Lead Safe™ J/V Wall
Sink Set with 165 Fixed Spout & Aerator (NSW)

Product Codes: 174.54.22.03



GalvinCare® CP-BS Lead Safe™ Vandal
Resistant Ezy-Grip Shower Set C/D

Product Code: 121.51.13.03



GalvinCare® CP-BS Lead Safe™ Anti-Ligature Wall Mtd Shower Rose

Product Code: 121.33.64.00



Vandal Resistant CP Lead Safe™ J/V Wall Top Assembly (Cold/Hot)

Product Codes: 174.01.02.01(C), 174.01.02.02(H)



CP-BS Lead Safe™ Knee Operated Timeflow Valve with Regulator, Spout & Connection Kit

Product Code: 173.61.46.00



Ezy-Push® CP-BS Lead Safe™ Push Button Foot Valve 90° Mount

Product Code: 172.62.43.00



CliniLever® CP-BS Fixed Shower Arm and Rose

Product Code: 42008



CliniLever® CP-BS Single Lever Shower Mixer with 165mm Accessible Lever

Product Code: TM-SHWCPD



Ezy-Push® CP-BS Lead Safe™ Timeflow Push Button Wall Valve with Regulator - Adjustable

Product Code: 173.61.55.00



Ezy-Lever CP-BS Lead Safe™ Timeflow Knee Operated Valve with Regulator (15sec)

Product Code: 173.61.44.00



CliniLever® CP Single Lever Shower Mixer

Product Codes: TM-SHWCP



GalvinAssist® Hand Shower Kit with 900 x 32mm SS Hygienic Grab Rail

Product Code: 41999



GalvinAssist® Hand Shower with 900 x 32mm SS Hygienic Grab Rail & ClevaCare® Shower

Product Code: 41978



GalvinAssist® Hand Shower with Inverted T 700 x 1100mm SS Hygienic Grab Rail (Centre)

Product Code: 41978



Sanitaryware

We offer a wide range of taps, mixers and accessories for sinks and showers so you can choose the option that is best suited to your needs and environment. Select from cam action, lever action, push button, sensor activated. The product range not only assists in infection control through handsfree operation but also ensures efficient water use.



Ifo Sign 6820 Junior Toilet 4.5L / 3L Dual Flush with Soft-Close Seat, S-Trap - White

Product Code: 682001809



Ifo Spira 6261 Toilet with Ifo Double Flap Soft Close Seat

Product Code: 108.00.03.00



GalvinAssist® Wall Faced, Clean Flush, Easy Care Ambulant Toilet Suite with Soft Close Seat

Product Codes: 105.10.20.00



GalvinAssist® Wall Faced, Clean Flush, Easy Care, Toilet Pan with Soft Close Seat

Product Codes: 105.11.20.00



GalvinAssist® Wall Faced, Clean Flush, Easy Care Accessible Toilet Suite with Blue Seat

Product Code: 105.10.10.01



GalvinAssist® Wall Faced, Clean Flush, Easy Care Accessible Toilet Suite with Blue Seat

Product Code: 105.11.10.01



GalvinAssist® Close Coupled, Clean Flush, Easy Care Toilet Suite with S-Trap

Product Code: 105.10.00.03



Wallgate Anti-Vandal Solid Surface Urinal with Through-Wall Concealed Services

Product Code: CWU-01W



GalvinAssist® Slim Design Inwall Cistern, Less Flush Plate

Product Codes: 105.94.00.00



Flowmatic® Automatic Flusher Ceiling/Wall Mtd for Urinal 15 24v AC

Product Code: TZ-FLOWFLUS



GalvinAssist® Plati Square, Wall or Above Counter Mount Basin with Overflow (1TH)

Product Code: 105.32.12.01



GalvinAssist® Ultra-Compact, Wall Mount Basin with Overflow (1TH)

Product Code: 105.32.13.01



GalvinAssist® CP, Accessible Dual Flush Plate, Pneumatic Push to Suit Inwall Cistern

Product Code: 105.96.00.00



GalvinAssist® CP, Dual Flush Plate, Pneumatic Push to Suit Inwall Cistern

Product Code: 105.95.00.00



GalvinAssist® Wall Mount Basin 500mm with Overflow (1TH/3TH)

Product Codes: 105.32.10.01(1TH), 105.32.10.03 (3TH)



GalvinAssist® Semi Recessed Basin 500mm with Overflow (1TH/3TH)

Product Codes: 105.36.01.01 (1TH), 105.36.01.01 (3TH)



Kolo Rekord Wall Basin 50cm without Overflow (0TH/TH)

Product Codes: K91451000 (0TH), K91450000 (1TH)



Kolo Rekord Wall Basin 60cm Type B without Overflow (0TH/TH)

Product Codes: K91461000 (0TH), K91460000 (1TH)



GalvinAssist® Angled 700 x 450mm Grab Rail (LH/RH)

Product Codes: 105.05.03.31 (LH), 105.05.05.41 (RH)



GalvinAssist® Angled 960 x 600mm Grab Rail (LH/RH)

Product Codes: 105.08.09.31 (LH), 105.08.09.41 (RH)



GalvinAssist® Accessible 600mm Wall Mount Basin, LH Bowl with Overflow (1TH/3TH)

Product Codes: 105.33.10.01 (1TH), 105.33.10.03 (3TH)



GalvinAssist® Accessible 600mm Wall Mount Basin, RH Bowl with Overflow (1TH/3TH)

Product Codes: 105.33.11.01 (1TH), 105.33.11.03 (3TH)



GalvinAssist® Straight Grab Rail Stainless Steel (300mm - 900mm)

Product Codes: 105.00.00.01, 105.00.03.01, 105.00.09.01



GalvinAssist® PWD Backrest

Product Code: 105.76.02.01



Laboratory Tapware & Gas Outlets

Our AS/NZS 3718 approved laboratory tapware and AS 4617 AGA certified gas outlets are specifically designed to be used in a school laboratory environment. They feature tough vandal resistant handles with a unique locking system for additional safety, and a comprehensive range of interchangeable nozzles for flexible use. Every tap is quality tested and can be ordered in a satin chrome plated finish or chemical resistant epoxy coating to suit your environment.



GalvinLab® CP-BS Lead Safe™ Lab Set 1-Way
Type 16 Upswept Swivel J/V #1 Aerator (RH)

Product Code: 167.16.42.00



GalvinLab® CP-BS Lead Safe™ Lab Set 1-Way
Type 16 DPW Fixed J/V #8 Aerator (RH)

Product Code: 167.16.32.00



GalvinLab® CP-BS Lead Safe™ Lab Set 1-Way
Type 16 Fixed J/V #1 Aerator (RH)

Product Code: 167.16.22.00



GalvinLab® CP-BS Lead Safe™ Lab Set 1-Way
Type 16 Fixed J/V #16XT Tube Nozzle (LH/RH)

Product Codes: 167.16.27.00 (L), 167.16.21.00 (R)



GalvinLab® CP-BS Lead Safe™ Lab Set 1-Way
Type 16 Swivel J/V #16XT Tube Nozzle (RH)

Product Code: 167.16.11.00



GalvinLab® CP-BS Lead Safe™ Lab Set 1-Way
Type 16 Swivel J/V #1 Aerator (RH)

Product Code: 167.16.12.00



GalvinLab® CP-BS Lead Safe™ Lab Set 1-Way
Type 16 DPW Fixed J/V #8 Aerator (LH/RH)

Product Codes: 167.16.33.00 (L), 167.16.32.00 (R)



GalvinLab® CP-BS Lead Safe™ Lab Set 1-Way
Type 16 Fixed J/V Lever Handle Tube Nozzle
(LH/RH)

Product Codes: 167.16.27.01 (L), 167.16.21.01 (R)



GalvinLab® CP-BS Lead Safe™ Lab Set H&C
Mixing Unit Type 13 Swivel J/V #1 Aerator

Product Code: 167.13.12.00



GalvinLab® CP-BS Lead Safe™ Lab Set H&C
Mixing Unit Type 13 Swivel J/V #16XT Tube
Nozzle

Product Code: 167.13.11.00



GalvinLab® CP-BS Lead Safe™ Lab Set H&C
Mixing Unit Type 19 Swivel J/V #1 Aerator

Product Code: 167.19.12.00



GalvinLab® CP-BS Lead Safe™ Lab Set H&C
Mixing Unit Type 19 Swivel J/V #16XT Tube
Nozzle

Product Code: 167.19.11.00



GalvinLab® CP-BS Lead Safe™ Lab Set 3-Way
Type 7 Fixed J/V #1 Aerator & #16XT Tube
Nozzles

Product Code: 167.07.20.00



GalvinLab® CP-BS Lead Safe™ Lab Set H&C
Mixing Unit Type 14 J/V #1 Aerator #16XT Tube
Nozzles (Fixed/Swivel)

Product Codes: 167.14.20.00 (F), 167.14.11.00 (S)



GalvinLab® CP-BS Lab Set 2 Way Type 8
Swivel J/V #16XT Tube Nozzle

Product Code: 167.08.11.00



GalvinLab® CP-BS Lead Safe™ Lab Set 1-Way
Right Angle Valve Type 17 Fixed J/V #16XT
Tube Nozzle

Product Code: 167.17.21.00



GalvinLab® CP-BS Lab 1-Way Straight Gas
Turret Type 37

Product Code: TG37C



GalvinLab® CP-BS Lab 2-Way Right Angle Gas
Turret Type 39 - 180°

Product Code: TG39RAC



GalvinLab® CP-BS Lab 2-Way Right Angle Gas
Turret Type 40 - 90°

Product Code: TG40RAC



GalvinLab® CP-BS Lab 3-Way Straight Gas
Turret Type 41

Product Code: TG41C



GalvinLab® CP-BS Lab 2-Way Straight Gas
Turret Type 39 - 180°

Product Code: TG39C



GalvinLab® CP-BS Lab 2-Way Straight Gas
Turret Type 40 - 90°

Product Code: TG40C



GalvinLab® CP-BS Lab 2-Way Right Angle Gas
Turret Type 40 DPW 90° with Non-Return Valve

Product Code: TG40.DRAC



GalvinLab® CP-BS Lab 4-Way Straight Gas
Turret Type 42

Product Code: TG42C



GalvinSafe® Combi Shower, AXION® MSR ABS Eye/Face Wash, Hand Act (HAWS)

Product Code: 190.80.10.12



GalvinSafe® Combi Shower, AXION® MSR ABS Eye/Face Wash, Hand & Foot Act (HAWS)

Product Code: 190.80.10.90



GalvinSafe® Free Standing Drench Shower, Pull Rod, AXION® MSR ABS Shower (HAWS)

Product Code: 190.81.12.32



GalvinSafe® Drench Shower, Pull Rod AXION® MSR ABS Shower (HAWS)

Product Code: 105.10.00.03

Safety Showers & Eye Washes

The GalvinSafe® (HAWS) emergency decontamination equipment is our latest commitment to improve the health and safety of our global community by providing customer focused safety, and tempering solutions. The ground-breaking AS 4775 compliant AXION® designs offer the only medically superior response solution in the industry.



GalvinSafe® Pedestal AXION® MSR Eye/Face Wash Head, SS Bowl Hand Act (HAWS)

Product Code: 190.82.11.12



GalvinSafe® Pedestal AXION® MSR Eye/Face Wash Head, SS Bowl Hand & Foot Act (HAWS)

Product Code: 190.82.11.9



GalvinSafe® Eye/Face Wash, Hand Act, AXION® MSR Head & SS Bowl (HAWS)

Product Code: 190.42.11.12



GalvinSafe® Eye/Face Wash, Hand Act, AXION® MSR Head, SS Bowl & Body Spray (HAWS)

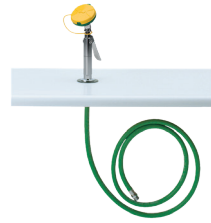
Product Code: 190.42.11.90





GalvinSafe® Eye/Face Wash, Hand Held, 3.6mtr Recoil Hose, AXION® MSR Head (HAWS)

Product Code: 190.42.65.32



GalvinSafe® Eye/Face Wash, Hob Mtd, Hand Held, AXION® MSR Eyewash Head (HAWS)

Product Code: 190.12.55.32



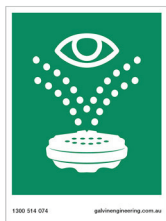
GalvinSafe® Body Spray, Wall Mtd, Hand Held, 2.4mtr Pressure Hose (HAWS)

Product Code: 190.43.55.32



GalvinSafe® Foot Treadle to Suit Floor Mtd Units (HAWS)

Product Code: 190.91.22.12



GalvinSafe® Safety Sign for Emergency Eye Wash - 270 x 200mm (HAWS)

Product Code: 190.91.12.32



GalvinSafe® Safety Sign for Emergency Shower & Eye Wash - 270 x 200mm (HAWS)

Product Code: 190.91.10.32



GalvinSafe® Shower & Eye Wash Testing Kit, ANSI Compliant (HAWS)

Product Code: 190.95.90.90



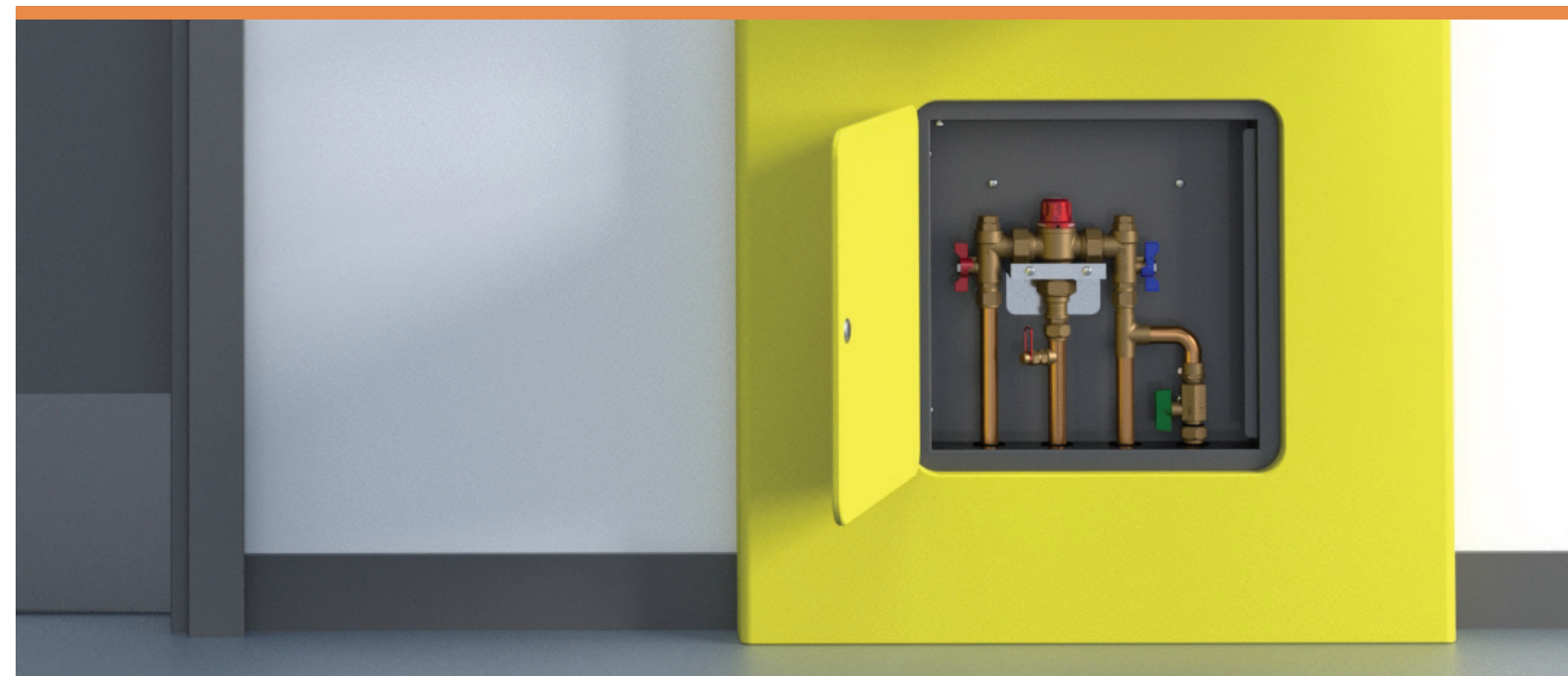
GalvinSafe® Waterproof Test Record Tags - Pack 25 (HAWS)

Product Code: 190.91.80.33



Thermostatic Mixing Valves

A wide variety of AS 4032.4 approved thermostatic mixing valves, give you precise control over the delivery of water, enabling the prevention of scalding and cold water shock by providing tempered water to the desired outlets, in compliance with relevant Australian Standards.





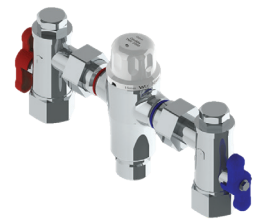
CliniMix® 1500 Lead Safe™ Thermostatic Mixing Valve

Product Code: 201.70.11.09



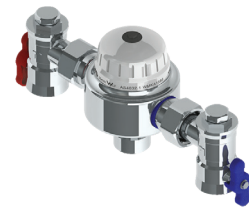
CliniMix® Mini Lead Safe™ 1/2” Thermostatic Mixing Valve

Product Code: 201.71.00.00



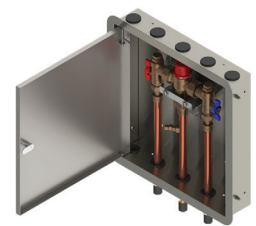
CliniMix® 2000 Lead Safe™ 3/4” Thermostatic Mixing Valve

Product Code: 201.70.02.00



CliniMix® 2500 Lead Safe™ Thermostatic Mixing Valve

Product Code: 201.70.03.00



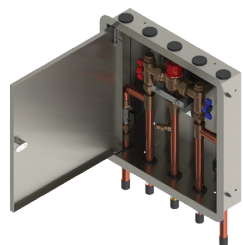
CliniMix® 1500 Lead Safe™ Thermostatic Mixing Valve in Cabinet

Product Code: 201.10.70.10



CliniMix® 1500 Lead Safe™ Thermostatic Mixing Valve with Cold Bypass in Cabinet

Product Code: 201.11.70.10



CliniMix® Lead Safe™ TMV 5-Year Upgrade/ Service Kit

Product Code: 201.13.70.10



CliniMix® Lead Safe™ TMV 5-Year Upgrade/ Service Kit

Product Code: 201.79.10.09



We design, manufacture and supply safe, green and smart water solutions for high risk and high care environments.

1300 514 074
sales@galvinengineering.com.au
galvinengineering.com.au

- Australia
- New Zealand
- UK
- USA

© CliniLever, Ezy-Drink, Ezy-Push, GalvinCare, GalvinClear, Galvin Engineering, GalvinLab, GalvinSafe, Galvin Specialised. All rights reserved. ™ Lead Safe © Galvin Engineering Pty Ltd



Whilst all reasonable care has been taken in compiling the information in this document, the designs, dimensions and products shown are indicative only and should not be relied upon without prior approval. Due to our policy of continuous development, we reserve the right to alter any details of specifications or products without notice. All information, drawings, technical specifications and product designs remain the property of Galvin Engineering Pty Ltd.