

ISSUE 1 | DEC 2021

---

# **GalvinSafe® (HAWS) Emergency Decontamination Equipment**

EYE/FACE WASH  
SHOWERS  
COMBINATION UNITS





# Galvin Engineering

As a family owned and operated Australian manufacturing company that has been around for over 90 years, we have assisted in the design and delivery of hundreds of projects in education, health, mental health, assisted care and corrections markets around Australia, gaining extensive experience in providing specialised tapware and bathroom solutions.

Our product range encompasses electronic, handsfree, lead safe, scald protection, anti-vandal and anti-ligature tapware represented by trusted specialist brands like CliniLever®, CliniMix®, Flowmatic®, GalvinCare® and Safe-Cell®.

Always looking for new ways to improve our product offering to provide safe and efficient water solutions we are proud to introduce our GalvinSafe® (HAWS) Emergency Decontamination Equipment.

## HAWS

Ingenuity is the HAWS culture. Everyday the HAWS Team work to address your needs and solve your challenges by applying imagination and initiative to make your job easier. HAWS is committed to improving the health and safety of our global community by providing customer focused hydration, safety, and tempering solutions. With more than 8,000 distribution locations and 250 employees worldwide, HAWS continually focuses on quality, service, reliability and complete solution support.

To this day, HAWS' innovative spirit is driven by third, fourth and fifth generations of the HAWS family.



## AS 4775 Compliance

### EMERGENCY EYEWASH AND SHOWER EQUIPMENT COMPLIANCE

AS 4775, based on ANSI/ISEA Z358.1, establishes minimum performance and use requirements for eyewash and shower equipment and also includes guidance on: dimensional constraints for disabled access, local materials for plumbing components and good design and manufacture.

One of the most critical mandatory performance criteria is the simultaneous operation.

### SIGNIFICANT REQUIREMENTS FOR SIMULTANEOUS USE INCLUDE:

- Eyewash must deliver a minimum of flushing fluid at 1.5 litres per minute or 11.4 litres per minute for an eye/face wash
- Drench shower must deliver a minimum of 75.7 litres per minute
- Must be capable of simultaneous use
- Must deliver tepid flushing fluid, defined as 15.6° - 37.8°C

### WHY TEPID WATER?

Providing the right water temperature will provide a comfortable flushing environment and encourage the required full 15-minute flush to:

- Help cool burns
- Help prevent hypothermia
- Help prevent chemical absorption
- Minimise further injury



## AXION® MSR

Flushing Inside To Out Is Preferred 4 to 1.

Ground-breaking AXION® designs continue to change the emergency response landscape by offering the only medically superior response® solution in the industry.

### INJURY REDUCTION

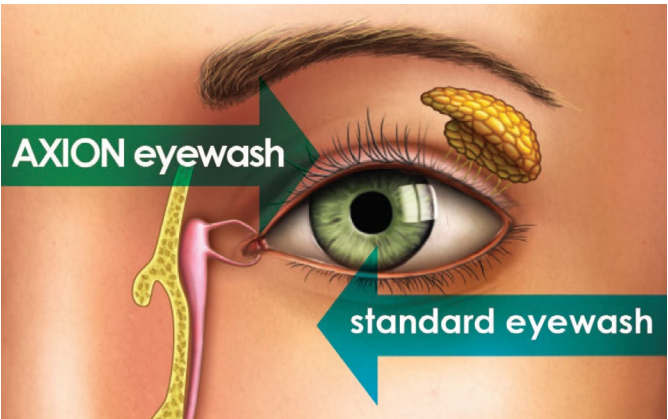
To aid in reducing unnecessary injury, the trademarked inverted eye/face wash water streams gently flush contaminants away from sensitive glands and ducts that surround the eye.

### INTEGRAL FLOW CONTROL

Predictable eye/face wash stream heights and laminar flow provide consistent pressure for greater user comfort. Flow controls within the showerhead regulate the flow rate to ensure water is available for the eye/face wash to allow for simultaneous use.

### VICTIM COMFORT

The hydrodynamic showerhead design minimises the strong physical pressure by releasing smaller discreet droplets and spinning the water inlet makes the distribution even across the entire footprint of the flow.



### AXION® MSR CAN SOLVE THE 3 MOST COMMON COMPLIANCE ISSUES BY PROVIDING:

1. Simultaneous Flow
2. Non-Injurious Controlled Flow
3. Even Eyewash Flow Patterns



# AXION® MSR Eye/Face Wash

## Features & Benefits

- Integral flow control
- Stainless steel bowl with a #2L bright finish
- Chrome-plated brass stay-open ball valve with a stainless steel ball and stem
- Signage and dust cover is included with all units
- Units are certified to meet the AS 4775 Standard for emergency eyewash and shower equipment for full 15-minute flush



GalvinSafe® Eye/Face Wash, Wall Mounted, Hand Activated, AXION® MSR Head & Stainless Steel Bowl

## Product Code: 190.42.11.12

GalvinSafe® wall mounted eye/face wash shall include a stainless steel 279mm round bowl, an AXION® MSR Head & SS Bowl with inverted directional laminar flow which achieves Zero Vertical Velocity™ supplied by an integral 11.4 lpm flow control, and type 316 stainless steel ball valve equipped with stainless steel ball and stem. Unit shall also include a type 304 stainless steel in-line 50 x 50 mesh water strainer and wall bracket, yellow plastic dust cover, universal sign, 1/2" BSPP(F) inlet, and 1-1/4" BSPT(M) waste.



GalvinSafe® Pedestal Floor Mounted, AXION® MSR Eye/Face Wash Head, SS Bowl, Hand & Foot Action

## Product Code: 190.82.11.90

GalvinSafe® stainless steel pedestal mounted eye/face wash shall include a stainless steel 279mm round bowl, an AXION® MSR eye/face wash head with inverted directional laminar flow which achieves Zero Vertical Velocity™ supplied by an integral 11.4 lpm flow control, type 316 stainless steel ball valve equipped with stainless steel ball and stem, and type 304 stainless steel in-line 50 x 50 mesh water strainer. Unit shall also include Type 304 pipe, fittings, and floor flange, along with a yellow plastic dust cover, universal sign, 1/2" BSPP(F) inlet, and 1-1/4" BSPT(M) waste.



GalvinSafe® Pedestal Floor Mounted, AXION® MSR Eye/Face Wash Head & SS Bowl, Hand Action

## Product Code: 190.82.11.12

GalvinSafe® stainless steel pedestal mounted eye/face wash shall include a stainless steel 279mm round bowl, an AXION® MSR eye/face wash head, SS Bowl Hand Action with inverted directional laminar flow which achieves Zero Vertical Velocity™ supplied by an integral 11.4 lpm flow control, type 316 stainless steel ball valve equipped with stainless steel ball and stem, and type 304 stainless steel in-line 50 x 50 mesh water strainer. Unit shall also include type 304 pipe, fittings, and floor flange, along with a yellow plastic dust cover, universal sign, 1/2" BSPP(F) inlet, and 1-1/4" BSPT(M) waste.



GalvinSafe® Eye/Face Wash, Wall Mounted, Hand Action, AXION® MSR Head, SS Bowl with Body Spray

## Product Code: 190.42.11.90

GalvinSafe® wall mounted eye/face wash shall include a stainless steel 279mm round bowl, an AXION® MSR Head with inverted directional laminar flow which achieves Zero Vertical Velocity™ supplied by an integral 11.4 lpm flow control, and type 316 stainless steel ball valve equipped with stainless steel ball and stem. Unit shall also include a type 304 stainless steel in-line 50 x 50 mesh water strainer and wall bracket, yellow plastic dust cover, universal sign, 1/2" BSPP(F) inlet, and 1-1/4" BSPT(M) waste.



# AXION® MSR Drench Showers

## AXION® NOZZLE

The AXION® drench shower nozzle uses the latest in hydrodynamic principles to spin inlet water and break it into smaller, discrete droplets. It is designed to minimize the strong physical pressure that drives the water to the outer rim of normal showerheads, making the distribution equal across the entire footprint of the flow. This innovative design is featured on a number of shower units providing a comfortable environment by breaking the streams of water into smaller individual droplets.



GalvinSafe® Drench Shower,  
Wall Mounted, Pull Rod,  
AXION® MSR ABS Shower

## Product Code: 190.41.12.12

GalvinSafe® Emergency Drench Shower for horizontal or vertical installation shall include the AXION® MSR ABS hydrodynamic design showerhead with 75.7lpm flow control, type 316 stay-open ball valve equipped with stainless steel ball and stem, stainless steel pull rod with triangular handle, universal sign, and 1"BSPT(M) supply.

GalvinSafe® Free Standing Drench Shower,  
Pull Rod, AXION® MSR ABS Shower

## Product Code: 190.81.12.32

GalvinSafe® floor mounted drench shower shall include the AXION® MSR hydrodynamic designed ABS plastic showerhead with self-regulating 75.7 lpm flow control, and Type 316 stainless steel stay-open ball valve equipped with a stainless steel ball and stem. Unit shall also include powder-coated cast-iron 229mm diameter floor flange, self-adhesive high visibility 533mm long stripe in Safety Green and bright yellow, stainless steel pull rod with triangular handle, universal sign, and 1-1/4"BSPT(M) supply.





# AXION® MSR Combination Units



GalvinSafe® Free Standing Combi Shower,  
AXION® MSR ABS Eye/Face Wash,  
Hand Action

**Product Code: 190.80.10.12**

GalvinSafe® combination shower and eye/face wash shall include an 279mm round bowl, an AXION® MSR ABS eye/face wash head that supplies an inverted directional laminar flow which achieves Zero Vertical Velocity™ supplied by an integral 14 lpm flow control. Unit shall also include the AXION® MSR hydrodynamic design showerhead with 75.7lpm flow control, eyewash dust cover, stainless steel 50 x 50 mesh water strainer, and type 316 stainless steel stay-open shower and eyewash ball valves equipped with stainless steel ball and stem. Unit shall also include a cast 229mm diameter floor flange, universal sign, self-adhesive high visibility safety green and bright yellow stripes 1-1/4"BSPT(M) supply and waste.



GalvinSafe® Free Standing Combi Shower,  
AXION® MSR ABS Eye/Face Wash,  
Hand & Foot Action

**Product Code: 190.80.10.90**

GalvinSafe® combination shower and eye/face wash shall include an 279mm round bowl, an AXION® MSR ABS eye/face wash head that supplies an inverted directional laminar flow which achieves Zero Vertical Velocity™ supplied by an integral 14 lpm flow control. Unit shall also include the AXION® MSR hydrodynamic design showerhead with 75.7lpm flow control, eyewash dust cover, stainless steel 50 x 50 mesh water strainer, and type 316 Stainless Steel stay-open shower and eyewash ball valves equipped with stainless steel ball and stem. Unit shall also include a cast 229mm diameter floor flange, universal sign, self-adhesive high visibility safety green and bright yellow stripes 1-1/4"BSPT(M) supply and waste.



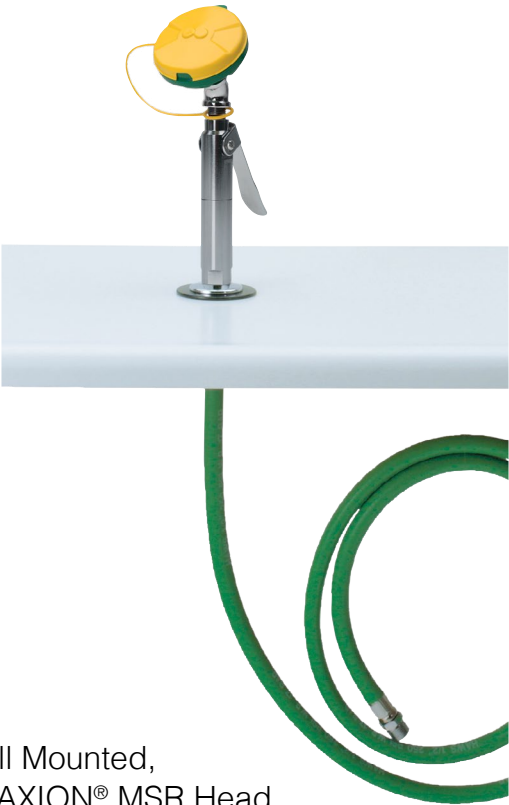


# AXION® MSR Accessibility

GalvinSafe® Eye/Face Wash, Hob Mounted,  
Hand Held, AXION® MSR Eyewash Head

**Product Code: 190.12.55.32**

GalvinSafe® Eye/Face Wash, Hob Mounted, Hand Held, Axion® MSR Eyewash Head which features an inverted directional laminar flow which achieves Zero Vertical Velocity™ supplied by an integral 14 lpm flow control. The unit shall also include a chrome plated brass stay-open squeeze lever valve, (243.8cm) 1735 kPa green hose with chromeplated swivel fitting at one end, Noryl plastic deck flange with integral key slot for proper positioning of unit, universal sign, and 1/2" BSPT inlet. A vacuum breaker is required to be used with this item. (Not supplied with the product or by Galvin Engineering)



GalvinSafe® Eye/Face Wash, Wall Mounted,  
Hand Held, 3.6mtr Recoil Hose, AXION® MSR Head

**Product Code: 190.42.65.32**

GalvinSafe® Eye/Face Wash, Wall Mounted, Hand Held, 3.6mtr Recoil Hose, AXION® MSR Head which features an inverted directional laminar flow for Zero Vertical Velocity™ supplied by an integral 14 lpm flow control, chrome plated brass stay-open squeeze lever valve, 366cm yellow recoil hose with chrome-plated swivel fitting at one end, universal sign, and 1/2" BSPP(F) inlet.



GalvinSafe® Body Spray, Wall Mounted,  
Hand Held, 2.4mtr Pressure Hose

**Product Code: 190.43.55.32**

GalvinSafe® wall mounted body spray shall include a green ABS plastic head with integral flip-top dust cover, chrome plated brass stay-open squeeze lever valve with integral flow control, 244mm 1725 kPa green rubber hose with chrome plated swivel fitting at one end, wall-mounting bracket, universal sign, and 1/2" BSP inlet. A vacuum breaker is required to be used with this item. (Not supplied with the product or by Galvin Engineering).



GalvinSafe® Shower & Eye Wash Testing Kit, ANSI Compliant

**Product Code: 190.95.90.90**

GalvinSafe® Safety Shower/Deluge Shower and Eye Wash Compliance Testing Kit (HAWS) is an ANSI Emergency Shower and Eyewash Testing Kit. It includes a 18.9 litres bucket with lid and marked line indicating the 2.57 litres, a shower sock and 3-piece pole to direct water into bucket, eyewash gauge, tape measure, thermometer, ANSI checklist for testing compliance and testing instructions. All items included fit directly into the bucket for ease of transportation.



Emergency Eye Wash - 270x200

**Product Code: 190.91.12.32**

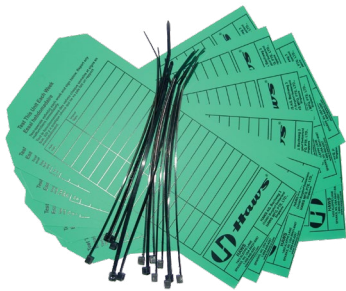
GalvinSafe® Emergency Eye Wash Sign (HAWS) is a vertical, universal emergency eyewash sign, made of green plastic. 8" W x 10-3/4" H (20.3 x 27.3 cm).



GalvinSafe® Safety Sign for Emergency Shower & Eye Wash  
- 270x200

**Product Code: 190.91.10.32**

GalvinSafe® Emergency Shower & Eye Wash Sign (HAWS) is a vertical, universal combination emergency shower and eyewash sign, made of green plastic. 8" x 10-3/4" H (20.3 x 27.3 cm).



GalvinSafe® Waterproof Test Record Tags (Pack 25)

**Product Code: 190.91.80.33**

GalvinSafe® Test Record Tags (25 Pack) (HAWS) is a test card with space for date and initials of inspector. Used to record weekly testing of emergency equipment. Printed on water proof stock for a permanent record. Packaged in quantities of 25. Includes zip ties.






GalvinSafe® Foot Treadle to Suit  
190.80.10.12 & 190.82.11.12 Floor Mounted Units

**Product Code: 190.91.22.12**

GalvinSafe® Foot Treadle is a complete stainless steel foot control assembly, including chain, clamp, nut, ring, screw, spring and treadle. For use on pedestal and combination units.

We design,  
manufacture and  
supply safe, green  
and smart water  
solutions for high  
risk and high care  
environments.

 1300 514 074  
 [sales@galvinengineering.com.au](mailto:sales@galvinengineering.com.au)  
 [galvinengineering.com.au](http://galvinengineering.com.au)

- Australia
- New Zealand
- UK
- USA