

ISSUE 2
APRIL 2026

galvin

Water Solutions for a Healthier Environment



**NDIS SDA
Housing
Solutions**

Championing inclusive living with safer, more comfortable and easier to access homes.

There are around 4.4 million Australians who have a disability⁽¹⁾, and for many, the National Disability Insurance Scheme (NDIS) represents a life-changing opportunity. The NDIS provides over 500,000 Australians who have permanent or significant disabilities with funding for essential supports and services they need to live more independently and comfortably. At Galvin Engineering, we understand the importance of safe, accessible, and purpose-built housing in achieving this. Through our expertise in designing and delivering high-quality tapware, sanitaryware, and plumbing solutions, we are committed to helping create Specialist Disability Accommodation (SDA) that empowers individuals and enhances their quality of life.



National Disability Insurance Scheme (NDIS)

The NDIS is an Australian government initiative aimed at providing support and services to people with disabilities. The primary goal of the NDIS is to empower people with disabilities to lead more independent lives and participate fully in their communities.

The scheme aims to provide a person-centred approach, tailoring support to the specific needs and goals of each individual.

NDIS plans allocate funding across various categories, allowing participants to choose service providers and manage their funds independently. The flexibility of the scheme enables individuals to direct their support toward daily living, community participation, education, and more.

Specialist Disability Accommodation (SDA)

Specialist Disability Accommodation (SDA) is a specific category of support within the Australian National Disability Insurance Scheme (NDIS).

SDA refers to accommodation for people with very high or complex support needs who require specialised housing solutions that cater to their disabilities.

The primary purpose of SDA is to provide suitable housing that incorporates features, design, and technology to enhance the independence and quality of life for individuals with significant disabilities.

SDA operates with separate funding from other NDIS support categories, solely allocated for housing needs, and is delivered by registered providers meeting stringent quality and safety standards.

NDIS SDA Design Standard & National Construction Code (NCC)

The National Construction Code (NCC) sets out the minimum construction requirements for all new building work in Australia. The dwelling is required to comply with all applicable requirements of the NCC, including but not limited to waterproofing and termite protection measures.

Apart from the spatial requirements as noted in this NDIS SDA Design Standard, where there is a conflict between the NCC and the NDIS SDA Design Standard, the NCC takes precedence⁽²⁾.

⁽²⁾ NDIS Specialist Disability Accommodation Design Standard. Edition 1.1 Issue Date 25th October 2019

How can Galvin Engineering help?

Our aesthetically pleasing ligature and vandal resistant products are designed to reflect the new vision and philosophy of hope, healing, and recovery. Placing a strong emphasis on home like, non-institutional, and patient-centred environments they assist in improving health outcomes through familiarity, and a sense of being valued while protecting residents and caregivers.

With the safety of both residents and caregivers at the forefront, our safe and easy to use NDIS SDA tapware and sanitaryware not only assists residents in carrying out more tasks independently but also reduces mental and physical stress of assisted tasks ensuring a more comfortable experience for residents and caregivers.

Galvin Engineering can offer full room bathroom solutions for NDIS SDA environments. Our range includes tapware, showers, thermostatically controlled solutions through to solid surface sanitaryware, grab rails, mirrors, drinking solutions and drainage products.

⁽¹⁾ People with disability in Australia, 23rd April 2024: <https://www.aihw.gov.au/reports/disability/people-with-disability-in-australia/contents/summary#How-Many>

Robust Housing

Robust houses are specially designed and constructed homes that prioritise high levels of physical accessibility and durability. These homes are built to withstand various challenges, reducing the need for frequent maintenance and ensuring the safety and independence of residents. By providing a secure and resilient living environment, robust housing supports the well-being of both its occupants and the broader community.

Robust Housing General Design Features

Designing strong homes involves using durable materials and robust structures that can withstand different conditions. Key aspects include weather-resistant features, energy efficiency, and sustainability. Homes should be adaptable to changing needs, safe, and accessible. Consideration for natural light, local climate, and community integration contributes to overall resilience. The focus is on low-maintenance, energy-efficient designs that prioritise both structural strength and environmental consciousness, creating homes that last and enhance the well-being of residents and the community.

This includes:

- Durable Materials and Robust Fixtures
- Curated Colours and Interior
- Sensory Sound Proofing
- Increased Safety Measures
- Reinforced Walls, Doors and Safety Glass Windows

Robust Housing Tapware and Sanitaryware

In designing a robust home, attention to tapware and sanitaryware involves prioritising durability, functionality, and water efficiency. The selection of materials, such as stainless steel or brass, emphasises longevity and resistance to corrosion. Water-efficient features, like low-flow technology, are considered to promote sustainability. Additionally, a focus on easy maintenance is maintained, with designs that facilitate straightforward cleaning. Ensuring adaptability and accessibility, such as incorporating lever handles and strategically placed grab bars, caters to diverse user needs.

The cohesive integration of style and aesthetics is important, ensuring that tapware and sanitaryware complement the overall design of the home. Consistency in design and finish throughout the house contributes to a unified and visually pleasing environment. Exploring smart technologies, like touchless faucets and sensor-controlled toilets, adds modern functionality and promotes hygiene.



Design Standards Category Key

The Specialist Disability Accommodation (SDA) Design Standards consists of four Design Categories that design requirements relate to throughout the standard. For consistency, these four categories have been utilised throughout this brochure to assist with identifying which design categories apply to our products.

Improved Livability

Housing that has been designed to improve 'Livability' by incorporating a reasonable level of physical access and enhanced provision for people with sensory, intellectual or cognitive impairment.

Fully Accessible

Housing that has been designed to incorporate a high level of physical access provision for people with significant physical impairment or high support needs.

Robust

Housing that has been designed to incorporate a reasonable level of physical access provision and be very resilient, reducing the likelihood of reactive maintenance and reducing the risk to the both the residents and the community.

High Physical Support

Housing that has been designed to incorporate a high level of physical access provision for people with significant physical impairment and require very high levels of support.

Tapware

Our NDIS SDA housing-specific tapware are designed to enhance usability and accessibility with a variety of options including accessible, sensor, and ligature resistant design.

 Improved Livability
  Fully Accessible
  Robust
  High Physical Support



GalvinAssist® CP Lead Safe™ Basin Mixer with Long Paddle Handle W&C

Product Code: 113.42.20.04



CliniLever® Stainless Steel Lead Safe™ Basin Mixer with Accessible Lever

Product Code: TM-BASXD



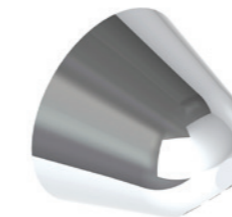
Flowmatic® Lead Safe™ GC20 Hob Basin Tap - Mains Power

Product Code: 151.10.12.00



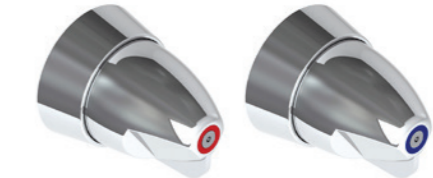
CliniLever® CP-BS Lead Safe™ Basin Set with Fixed 150mm Outlet 150 C/D

Product Code: 102.13.21.03



GalvinCare® CP-BS Lead Safe™ Ligature Resistant Wall Outlet 15 FI

Product Code: 121.41.40.00



GalvinCare® CP-BS Lead Safe™ Ligature Resistant Paddle Wall Top Assembly 1/4 Turn C/D- Hot & Cold

Product Code: 120.71.16.01 & 120.71.16.02



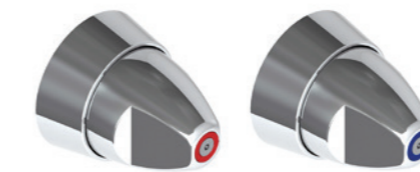
GalvinAssist® CP Lead Safe™ Tall Sink Mixer with Long Pin Handle H&C - Black

Product Code: 113.43.41.03



CliniLever® SS Lead Safe™ Gooseneck Sink Mixer

Product Code: TM-SNKGX



GalvinCare® CP-BS Lead Safe™ Ligature Resistant Ezy-Grip Wall Top Assembly C/D -

Product Code: 121.01.03.01 & 121.01.03.02




CliniMix® CP-BS Lead Safe™ Ligature Resistant Inwall Thermostatic Progressive Shower Mixer with GalvinCare® Handle - Warm & Cold

Product Code: 100.50.75.01

Basins

Our range of NDIS SDA housing-specific basins offer various activation options to accommodate diverse risk levels. These basins are designed with features such as ligature resistant properties, robust construction, and minimum depth requirements, ensuring a secure and adaptable solution.

 Improved Livability
  Fully Accessible
  Robust
  High Physical Support



HEWI Dementia Wall Hung Wash Basin 600mm x 550mm 1TH White with Ruby Red Handles

Product Code: 950.11.106



Wallgate S/Surface Wall Basin with Exposed Services 1TH (RH) + Wide Shroud

Product Code: 123.00.06.40 & 123.00.92.40



Wallgate Ligature Resistant S/Surface Wall Basin with Integ Outlet - Rear Fixed

Product Code: 123.01.10.40



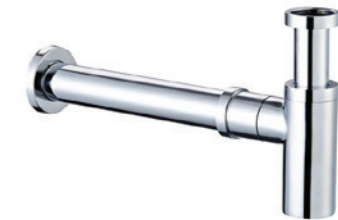
Wallgate Ligature Resistant S/Surface Wall Basin with Rear Waste 0TH - Rear Fixed

Product Code: 123.01.90.40



Kolo Rekord Wall Basin 60cm Type B without Overflow 1TH

Product Code: K91460000



GalvinAssist® Chrome, Round Bottle Trap, Wall Exit, Suits 32mm & 40mm Waste Holes

Product Code: 105.93.00.00



GalvinAssist® 720mm Access Wall Basin LH Bowl No Overflow 0TH

Product Code: 105.30.71.01



Wallgate Ligature Resistant S/Surface Wall Basin with Integ Outlet & Shelf - Front Fixed (LH/RH)

Product Code: 123.02.00.40 (LH), 123.02.10.40 (RH)



Selnova Square Counter Top Basin 55cm with Overflow 1TH

Product Code: 500.306.01



Wallgate Undermount Vanity Bowl Only Solid Surface with No Overflow 426 x 344mm

Product Code: VBU-01-NOFW

Toilets

Our NDIS SDA housing-specific toilets feature a robust selection of vandal resistant, ligature resistant solid surface pans. With a focus on durability and safety, these toilets are designed to meet the unique requirements of secure environments, ensuring both resilience and risk mitigation.

 Improved Livability
  Fully Accessible
  Robust
  High Physical Support



GalvinAssist® Wall Faced, Clean Flush, Easy Care, Ambulant Toilet Suite with Soft Close Seat

Product Code: 105.10.20.00



Ifo Spira 6261 Toilet with Ifo White Double Flap Soft Close Seat

Product Code: 108.00.02.00



GalvinAssist® Clean Flush Ambulant Toilet Pan with Soft Close White Seat

Product Code: 105.11.20.00



SS Vandal Resistant Dual Flush Plate Assembly for Pneumatic Inwall Cisterns

Product Code: 656510



GalvinCare® SS Ligature Resistant MH Dual Flush Plate with Conical Buttons for Pneumatic Cistern

Product Code: 656514



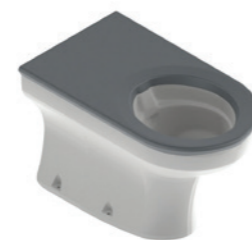
SS Vandal Resistant Dual Flush Plate Assembly for Pneumatic Inwall Cistern with CP-BS Flush Buttons

Product Code: 656507



Wallgate Ligature Resistant S/Surface Accessible Pan Covered with Integ Grey Seat 460x810mm

Product Code: 123.44.32.40



Wallgate Ligature Resistant S/Surface Pan Covered with Integ Grey Seat 446x702mm

Product Code: 123.41.32.40



Wallgate Pneumatic Activated Concealed Slimline Cistern

Product Code: CIST19-PNEU-2







GalvinAssist® PWD Backrest

Product Code: 105.76.02.01

Showers

Our NDIS SDA housing-specific showers feature sturdy and height-adjustable shower heads, coupled with lever and ligature resistant tapware options, ensuring adaptability and accessibility for users.

 Improved Livability
  Fully Accessible
  Robust
  High Physical Support



GalvinCare® CP-BS Lead Safe™ Ligature Resistant Wall Mtd Shower Rose

Product Code: 121.33.64.00



GalvinCare® CP-BS Lead Safe™ Ligature Resistant Ezy-Grip Shower Set C/D

Product Code: 121.51.13.03



GalvinAssist® Hand Shower Kit with 1000 x 32mm SS Hygienic Grab Rail & Pull Rod

Product Code: 41935



GalvinAssist® Hand Shower with Inverted T 700 x 1100mm SS Hygienic Grab Rail (Centre)

Product Code: 41978CP



GalvinAssist® CP Lead Safe™ Shower Mixer Set with Short Paddle Handle W&C

Product Code: 113.62.10.04



CliniLever® Stainless Steel Lead Safe™ Shower / Bath Mixer

Product Code: TM-SHWX



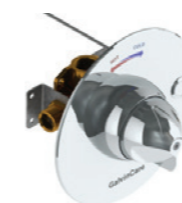
GalvinCare® CP-BS Lead Safe™ Ligature Resistant Safe-Connect Shower Head & Hand Shower

Product Code: 121.36.64.92



GalvinCare® CP-BS Lead Safe™ Ligature Resistant Inwall Progressive Shower Mixer (Non TMV) - Warm & Cold

Product Code: 120.52.11.04



GalvinCare® Ligature Resistant Electronic Concealed Shower Mixer with Handle & Controller

Product Code: TZ-FLOWTMSHWINR



GalvinAssist® Folding Shower Seat 960 x 400 x 480mm

Product Code: 105.70.09.01

Drains

Our range of NDIS SDA housing-specific drains include options that help mitigate the risks of self-harm, and contraband concealment, prioritising safety and wellbeing.

 Improved Livability
  Fully Accessible
  Robust
  High Physical Support



HeelGrate® SS Floor Drain Vinyl Round 150x100 with SS Body PVC/HDPE/CU Slip-In

Product Code: 303185X



Slip-Safe® SS Bolted Cleanout Round Vinyl 150x100 PVC/HDPE/CU Slip-In

Product Code: 69468X



HeelGrate® SS316 Floor Drain Grate Round 150x100 PVC/HDPE/CU Slip-In

Product Code: 302185X



Slip-Safe® SS316 Bolted Cleanout Round 150x100 PVC/HDPE/CU Slip-In

Product Code: 67790X



HeelGrate® SS316 Floor Drain Grate Round 100 x 80 PVC Slip-In

Product Code: 302182X



SS Floor Drain Grate Vinyl 100x80 PVC Slip-In

Product Code: 303176X



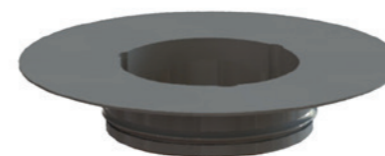
GalvinCare® Polished SS316 Ligature Resistant Floor Drain Round Vinyl 100x80BSP

Product Code: 303077X



GalvinCare® Polished SS316 Ligature Resistant Floor Drain Round 100x80BSP

Product Code: 303070X



PPR Floor Drain Adaptor Ring 80BSP FI x 100 PVC/HDPE Slip-in

Product Code: 302168



HeelGrate® SS316 Floor Drain Grate Square 150x100 PVC/HDPE/CU Slip-In

Product Code: 302505X

Accessories

Our range of accessories have been developed to complement our sanitaryware products. The ligature resistant accessories range includes: mirrors, shelves, toilet-roll holders, grab rails and other washroom products.



Wallgate Ligature Resistant Solid Surface Recessed Toilet Roll Holder

Product Code: TRH-04



HEWI Toilet Roll Holder - Signal White

Product Code: 477.21.100.98



Wallgate Ligature Resistant Polycarb Mirror with S/Surface Frame Rear Fixed 450x1010mm

Product Code: ALM-06W



Wallgate Ligature Resistant Polycarb Mirror with Solid Surface Frame Front Fixed 250x350mm

Product Code: ALM-02FF-W



GalvinCare® Ligature Resistant Single Robe/Towel Hook

Product Code: THK-01



HEWI Single Hook DIA=50mm - Signal White

Product Code: 477.90.010.98



GalvinCare® Powder Coated Ligature Resistant 90° Grab Rail 450x450mm (LH/RH)

Product Code: 42290, 42294



GalvinCare® Powder Coated Ligature Resistant Grab Rail 300mm (LH/RH)

Product Code: 42200, 42207



Wallgate Ligature Resistant Solid Surface Recessed Shower Shelf

Product Code: ALF-04



Wallgate Ligature Resistant S/Surface Shelf Rear Fixed 470x140mm

Product Code: ALF-03W-BCA



GalvinAssist® Straight Grab Rail Stainless Steel (300mm, 900mm)

Product Code: 105.00.00.01, 105.00.09.01



GalvinAssist® Angled 450 x 450mm Grab Rail

Product Code: 105.07.23.01

	Product Code	Product Description	Improved Living	Fully Accessible	Robust	High Physical Support
Tapware	113.43.41.03	GalvinAssist® CP Lead Safe™ Tall Sink Mixer with Long Pin Handle H&C	🏠	♿		♿
	TM-SNKGX	CliniLever® SS Lead Safe™ Gooseneck Sink Mixer		♿	🛡️	
	113.42.20.04	GalvinAssist® CP Lead Safe™ Basin Mixer with Long Paddle Handle W&C	🏠	♿		♿
	TM-BASXD	CliniLever® Stainless Steel Lead Safe™ Basin Mixer with Accessible Lever		♿		♿
	TZ-FLOWHOBSP	Flowmatic® Hob Basin Tap Single Temperature - Mains Powered				♿
	102.13.21.03	CliniLever® CP-BS Lead Safe™ Basin Set with Fixed 150mm Outlet 150 C/D	🏠	♿		♿
	121.41.40.00	GalvinCare® CP-BS Lead Safe™ Ligature Resistant Wall Outlet 15 Fl			🛡️	
	120.71.16.01	GalvinCare® CP-BS Lead Safe™ Ligature Resistant Paddle Wall Top Assembly 1/4 Turn C/D - Cold			🛡️	
	120.71.16.02	GalvinCare® CP-BS Lead Safe™ Ligature Resistant Paddle Wall Top Assembly 1/4 Turn C/D - Hot			🛡️	
	121.01.03.01	GalvinCare® CP-BS Lead Safe™ Ligature Resistant Ezy-Grip Wall Top Assembly C/D - Cold			🛡️	
	121.01.03.02	GalvinCare® CP-BS Lead Safe™ Ligature Resistant Ezy-Grip Wall Top Assembly C/D - Hot			🛡️	
100.50.75.01	CliniMix® Lead Safe™ Ligature Resistant Inwall Thermostatic Progressive Mixer - Warm & Cold			🛡️		
Basins	105.30.71.01	GalvinAssist® 720mm Access Wall Basin 0TH LH Bowl No Overflow - White	🏠	♿		♿
	123.02.00.40	Wallgate Ligature Resistant S/Surface Wall Basin with Integ Outlet & LH Shelf - Front Fixed		♿	🛡️	♿
	950.11.106	HEWI Dementia Wall Hung Wash Basin 600mm x 550mm 1TH White with Ruby Red Handles	🏠	♿		♿
	123.00.04.40	Wallgate S/Surface Wall Basin with Exposed Services 0TH		♿	🛡️	
	123.00.92.40	Wallgate S/Surface Wide Shroud for Wall Basin with Exposed Services		♿	🛡️	
	123.01.10.40	Wallgate Ligature Resistant S/Surface Wall Basin with Integ Outlet - Rear Fixed			🛡️	
	123.01.90.40	Wallgate Ligature Resistant S/Surface Wall Basin with Rear Waste 0TH - Rear Fixed	🏠		🛡️	
	K91460000	Kolo Rekord Wall Basin 600mm Type B without Overflow 1TH	🏠	♿		♿
	K97101000	Kolo Rekord Basin Shroud	🏠	♿		♿
	105.93.00.00	GalvinAssist® Chrome, Round Bottle Trap, Wall Exit, Suits 32mm & 40mm Waste Holes	🏠	♿		♿
	500.306.01.1	Selnova Square Counter Top Basin 55cm with Overflow 1TH	🏠	♿		♿
	VBU-01-NOFW	Wallgate Undermount Vanity Bowl Only Solid Surface with No Overflow, 426 x 344mm		♿	🛡️	♿
Toilets	123.44.32.40	Wallgate Ligature Resistant S/Surface Accessible Pan Coved with Integ Grey Seat 460x810mm		♿	🛡️	♿
	123.41.32.40	Wallgate Ligature Resistant S/Surface Pan Coved with Integ Grey Seat 446x702mm			🛡️	
	105.10.20.00	GalvinAssist® Wall Faced, Clean Flush, Easy Care, Ambulant Toilet Suite with Soft Close Seat	🏠	♿		♿
	108.00.02.00	Ifo Spira 6261 Toilet with Ifo White Double Flap Soft Close Seat	🏠	♿		♿
	105.11.20.00	GalvinAssist® Clean Flush Ambulant Toilet Pan with Soft Close White Seat	🏠			
	656510	SS Vandal Resistant Dual Flush Plate Assembly for Pneumatic Inwall Cisterns			🛡️	
	656514	GalvinCare® SS Ligature Resistant Dual Flush Plate with Conical Buttons for Pneumatic Cistern	🏠	♿	🛡️	♿
	656507	SS Vandal Resistant Dual Flush Plate for Pneumatic Inwall Cistern with CP-BS Flush Buttons			🛡️	♿
	CIST19-PNEU-2	Wallgate Pneumatic Activated Concealed Slimline Cistern	🏠	♿	🛡️	♿
	105.76.02.01	GalvinAssist® PWD Backrest	🏠	♿		♿

	Product Code	Product Description	Improved Living	Fully Accessible	Robust	High Physical Support
Showers	121.36.64.92	GalvinCare® CP-BS Lead Safe™ Ligature Resistant Safe-Connect Shower Head & Hand Shower				
	120.52.11.04	GalvinCare® CP-BS Lead Safe™ Ligature Resistant Inwall Progressive Shower Mixer (Non TMV) W&C				
	121.33.64.00	GalvinCare® CP-BS Lead Safe™ Ligature Resistant Wall Mtd Shower Rose				
	121.51.13.03	GalvinCare® CP-BS Lead Safe™ Ligature Resistant Ezy-Grip Shower Set C/D				
	41935	GalvinAssist® Hand Shower Kit with 1000 x 32mm SS Hygienic Grab Rail & Pull Rod				
	41978CP	GalvinAssist® Hand Shower with Inverted T 700 x 1100mm SS Hygienic Grab Rail (Centre)				
	113.62.10.04	GalvinAssist® CP Lead Safe™ Shower Mixer Set with Short Paddle Handle W&C				
	TM-SHWX	CliniLever® Stainless Steel Lead Safe™ Shower / Bath Mixer				
	TZ-FLOWTMSHWINR	GalvinCare® Ligature Resistant Electronic Concealed Shower Mixer with Handle & Controller				
	105.70.09.01	GalvinAssist® 960 x 400 x 480mm Folding Shower Seat				
Drains	303077X	GalvinCare® Polished SS316 Ligature Resistant Floor Drain Round Vinyl 100 x 80BSP				
	303070X	GalvinCare® Polished SS316 Ligature Resistant Floor Drain Round 100 x 80BSP				
	303185X	HeelGrate® SS Floor Drain Vinyl Round 150 x 100 with SS Body PVC/HDPE/CU Slip-In				
	69468X	Slip-Safe® SS Bolted Cleanout Round Vinyl 150 x 100 PVC/HDPE/CU Slip-In				
	302185X	HeelGrate® SS316 Floor Drain Grate Round 150 x 100 PVC/HDPE/CU Slip-In				
	67790X	Slip-Safe® SS316 Bolted Cleanout Round 150 x 100 PVC/HDPE/CU Slip-In				
	302182X	HeelGrate® SS316 Floor Drain Grate Round 100 x 80 PVC Slip-In				
	303176X	SS Floor Drain Grate Vinyl 100 x 80PVC Slip-In				
	302168	PPR Floor Drain Adaptor Ring 80 BSP FI x 100 PVC/HDPE Slip-in				
	302505X	HeelGrate® SS316 Floor Drain Grate Square 150 x 100 PVC/HDPE/CU Slip-In				
		TRH-04	Wallgate Ligature Resistant S/Surface Recessed Toilet Roll Holder			
Accessories	477.21.100.98	HEWI Toilet Roll Holder - Signal White				
	THK-01	GalvinCare® Ligature Resistant Single Robe/Towel Hook				
	477.90.010.98	HEWI Single Hook DIA=50mm - Signal White				
	ALF-04	Wallgate Ligature Resistant S/Surface Recessed Shower Shelf				
	ALF-03W-BCA	Wallgate Ligature Resistant S/Surface Shelf Rear Fixed 470x140mm				
	ALM-06W	Wallgate Ligature Resistant Polycarb Mirror with S/Surface Frame Rear Fixed 450x1010mm				
	ALM-02FF-W	Wallgate Ligature Resistant Polycarb Mirror with S/Surface Frame Front Fixed 250x350mm				
	42290	GalvinCare® PC Ligature Resistant 90° LH Grab Rail 700x950mm				
	42294	GalvinCare® PC Ligature Resistant 90° RH Grab Rail 700x950mm				
	42200	GalvinCare® PC Ligature Resistant LH Grab Rail 300mm				
	42207	GalvinCare® PC Ligature Resistant RH Grab Rail 300mm				
	105.00.00.01	GalvinAssist® SS Straight 300mm Grab Rail				
	105.00.09.01	GalvinAssist® SS Straight 900mm Grab Rail				
	105.07.23.01	GalvinAssist® Angled 450 x 450mm Grab Rail				



We design, manufacture
and supply safe,
green and smart water
solutions for high
risk and high care
environments.



1300 514 074



sales@galvinengineering.com.au



galvinengineering.com.au

- Australia
- New Zealand
- UK
- USA

GalvinEngineering 
the mark of reliability

© CliniMix, Flowmatic, GalvinAssist, GalvinCare, GalvinClear, Galvin Engineering, HeelGrate, Slip-Safe. All rights reserved.
™ Lead Safe. © Galvin Engineering Pty Ltd

Whilst all reasonable care has been taken in compiling the information in this document, the designs, dimensions and products shown are indicative only and should not be relied upon without prior approval. Due to our policy of continuous development, we reserve the right to alter any details of specifications or products without notice. All information, drawings, technical specifications and product designs remains the property of Galvin Engineering Pty Ltd.

Galvin Engineering offers a range of ligature resistant, anti-ligature, vandal resistant, and anti-vandal products designed to reduce the risk of self-harm, suicide, or vandalism, but we cannot offer any guarantee that these events will not take place. Therefore, it is important to understand that installation of these products will not eliminate all risks.

When we use the terms ligature resistant and/or anti-ligature about our products, it means that we have designed and tested these products to reduce the risk of that product being used as a ligature attachment point. They will not protect or prevent injury when the risks were unknown to us at the time of the design of the products. They are not a replacement for professionals who are trained in the proper evaluation, management, and supervision of persons at risk of self-harm or suicide.

When we use the terms vandal resistant and/or anti-vandal about our products, it means that we have designed and tested these products to reduce the risk of that product being vandalised. They will not protect or prevent damage when the risks were unknown to us at the time of the design of the products.

Galvin Engineering recommends that designers, installers, facility managers, and anyone intending to rely on or use any products displayed in our literature or on our website, satisfy themselves about the suitability of the products for their intended use in the building design, and ensure they are being installed, used, and maintained in accordance with our instructions. Facility managers, clinicians, and carers need to ensure that reasonable steps are taken to reduce the accessibility of unnecessary ligatures to at-risk patients, confirm that adequate risk mitigation controls are in place, and make sure that applicable health, safety and patient care standards are being met.

Galvin Engineering makes no express or implied warranties regarding the ability of the product to prevent death or injury, to resist all ligature attachment, or to prevent vandalism. No responsibility is assumed by Galvin Engineering for any incidental or consequential damages resulting from the use of any products sold by Galvin Engineering. To the fullest extent permitted by law, Galvin Engineering excludes all liability for damage or injury to any person, damage to any property, and any indirect consequential claims, loss or damage.