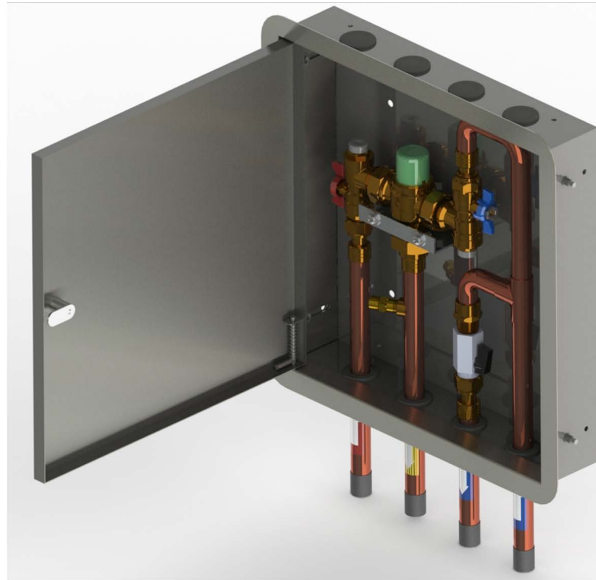


# CliniMix® Lead Safe™ SS TMV Cabinet Assembly with Universal Door 20mm Cold Water Bypass Bottom In and Out

Specification Data Sheet



## Features

- Manufactured using Lead Safe™ DZR Brass with less than 0.25% lead content
- NSW Health approved
- Easy in-situ servicing with body O'ring on the removable cartridge
- Sturdy hinged door stainless steel box with flange avoids damaging finished wall at installation
- Available with hot and cold thermal flush kit - not just hot side
- Safe, simple and easy to maintain. Flat faced connections allow removal of the valve without disturbing the pipework
- In the event of either hot or cold water supply failure the valve will shut down, quickly restoring flow when normal conditions resume
- Suitable for installation in low pressure systems and will operate with working pressure as low as 20kPa
- Water temperature is established at plus or minus 2 degrees even during water pressure or temperature fluctuations
- Compact design to fit into stud work

## To Specify

Galvin Specialised AS/NZS 4032.1 and NSW Health approved CliniMix® Lead Safe™ TMV Stainless Steel Cabinet Assembly with Universal Door range is designed to protect the most vulnerable from scalding or cold water shock by providing tempered water to the desired outlets that comply to the relevant Australian Standards and codes such as those of NSW Health.

### Code:

**101.11.70.10** - CliniMix® Lead Safe™ TMV SS Cabinet Assembly with Universal Door 20mm Cold Water Bypass Bottom In and Out



A family  
owned  
Australian  
business



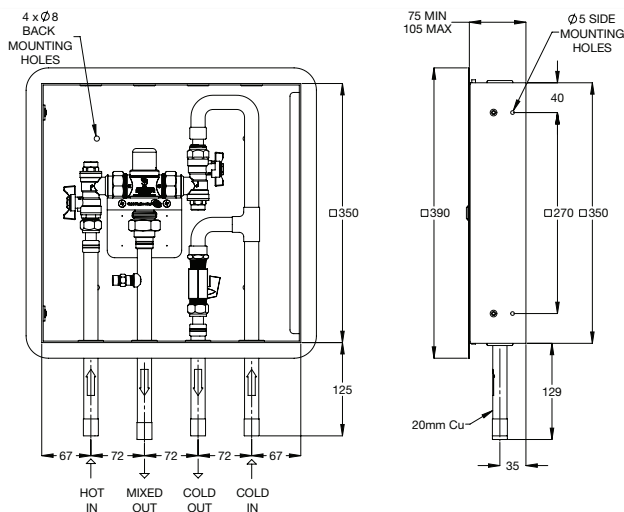
## Performance Standards & Approvals

- AS4032.1 – WaterMark

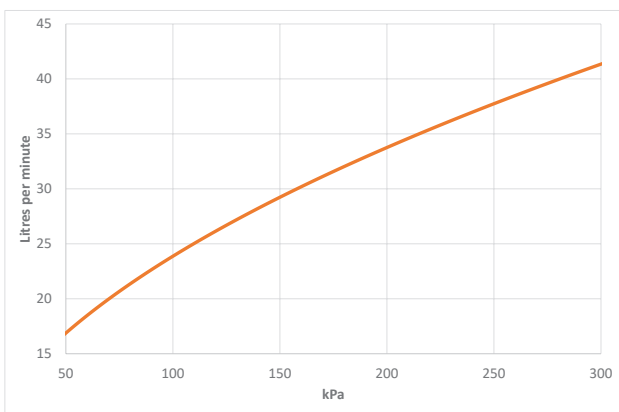


**WaterMark**  
AS 4032.1 WMKA 21989  
SAI Global

## Typical Dimensions



## Pressure Loss Ratio



## Warranty

Galvin Engineering products are covered under our Manufacturer's Warranty at [www.galvinengineering.com.au](http://www.galvinengineering.com.au). Galvin Engineering products must be installed in accordance with the installation instructions and in accordance with AS3500 and the PCA, relevant Australian Standards and local authorities applicable to product being installed. Water and electrical supply conditions must also comply to the applicable national and/or state standards, failing to comply with these provisions may void the product warranty and affect performance of the product.

Whilst all reasonable care has been taken in compiling the information in this document, the designs, dimensions and products shown are indicative only and should not be relied upon without our prior approval. Due to our policy of continuous development, we reserve the right to alter any details of specifications or products without notice. All information, drawings, technical specifications and product designs remains the property of Galvin Engineering Pty Ltd.

Within Australia: **1300 514 074** Outside Australia: P: +61 (0)8 9338 2344

F: +61 (0)8 9338 2340

sales@galvinengineering.com.au

[www.galvinengineering.com.au](http://www.galvinengineering.com.au)

ABN: 78 008 719 382

## Technical Information

- Inlet: 3/4" Cu Tube
- Outlet: 3/4" Cu Tube
- Headwork: Thermostatic Mixing Valve (TMV)
- Working Pressure Range (kPa): 20 Min - 500 Max
- Hot Supply Temperature Range (°C): 60 Min - 90 Max
- Cold Supply Temperature Range (°C): 5 Min - 25 Max
- Adjustable Temperature Range (°C): 35 Min - 48 Max
- Maximum Inlet pressure Ratio: 6:1
- Factory Set Thermostatic Temperature (°C): 43.5
- Minimum Flow Rate for stable outlet Temp. (LPM): 6
- Maximum Flow Rate (LPM): 24lpm@100kPa
- Construction: Lead Safe™ DZR Brass\*
- Finish: Stainless Steel

\*As 'lead free' is not currently defined by law in Australia and New Zealand, we have based our definition on s1417 of the USA's Safe Drinking Water Act (SDWA) and the relevant US standards NSF61 / NSF372. The SDWA defines 'lead free' as "not more than a weighted average of 0.25% lead when used with respect to the wetted surface of pipes, pipe fittings, plumbing fittings and fixtures".

## Maintenance & Cleaning

Galvin Specialised products should be cleaned with a soft damp cloth using only mild liquid detergent or soap and water. Do not use cleaning agents containing a corrosive acid, scouring agent or solvents. Do not use cream cleaners, as they are abrasive. Use of unsuitable cleaning agents may damage the surface. Any damage caused in this way will not be covered by warranty.

Regular maintenance should be carried out in accordance with the installation and troubleshooting guides provided with the product, relevant Australian Standards, local authorities and state codes.

As part of maintaining a safe and reliable plumbing system, we recommend tapware and valves are operated on at least a daily basis.

A business unit of

**GalvinEngineering**

the mark of reliability

