

# Domed Vertical Rain Water Outlet (with Membrane Clamp Ring) 150PVC/HDPE

Specification Data Sheet



## Features

- Heavy duty Galvanised Ductile Iron grate
- Removable grate for ease of access without disturbing the water proofing membrane
- Roof drain body fits various piping systems
- Large open area of the grate permits unrestricted water flow
- Ductile iron grate as per 150 1083/55/500-7/J to AS 1831

## Flow Rate Guide (litres/minute):

	Pressure head mm of water				
	20	30	40	50	100
Flow Rate (L/min)	200	250	300	325	-

*The waste outlet was tested without any downstream pipework and results present a discharge through the fitting to atmospheric pressure.*

## To Specify

Ductile iron black enamel coated rain water drain with built in puddle flange and heavy duty galvanised ductile iron dome grate and clamp ring with stainless steel lock down screws.

## Code:

**285219** – Dome Vertical Rain Water Outlet  
(with Membrane Clamp Ring) 150 PVC/HDPE

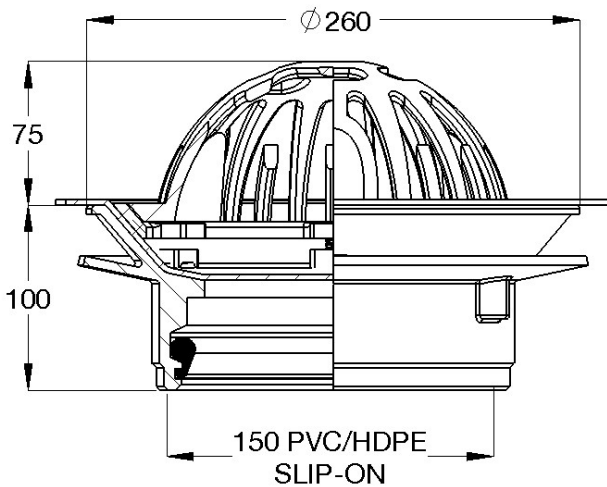


A family  
owned  
Australian  
business

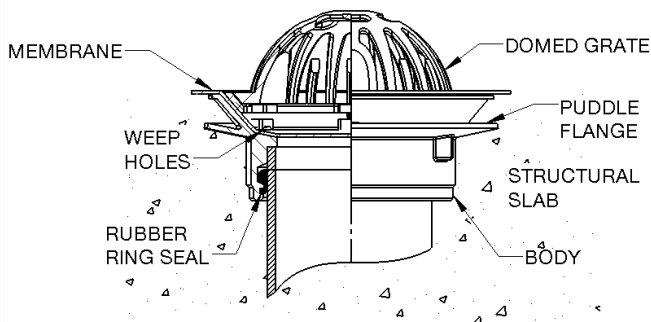


**galvinspecialised**  
commercial taps + fixtures

## Typical Dimensions



## Typical Installation



## Application

The dome grate version clamp ring type outlet is designed to hold a membrane between the body and the clamp ring. When removing the grate for cleaning purposes, the clamp ring remains in position leaving the membrane undisturbed. This assures a watertight seal at all times. In addition, any water seepage around the outlet is trapped at the base of the built in puddle flange and is discharged through the weep holes into the drain. This prevents moisture penetrating to lower level. The puddle flange type outlet is primarily designed for concrete floors where a membrane is fitted (e.g. Multi-story car parks, balconies, etc).

## Maintenance & Cleaning

Galvin Specialised products should be cleaned with a soft damp cloth using only mild liquid detergent or soap and water. Do not use cleaning agents containing a corrosive acid, scouring agent or solvents. Do not use cream cleaners, as they are abrasive. Use of unsuitable cleaning agents may damage the surface. Any damage caused in this way will not be covered by warranty.

Regular maintenance should be carried out in accordance with the installation and troubleshooting guides provided with the product, relevant Australian Standards, local authorities and state codes.

As part of maintaining a safe and reliable plumbing system, we recommend tapware and valves are operated on at least a daily basis.

## Warranty

Galvin Engineering products are covered under our Manufacturer's Warranty at [www.galvinengineering.com.au](http://www.galvinengineering.com.au). Galvin Engineering products must be installed in accordance with the installation instructions and in accordance with AS3500 and the PCA, relevant Australian Standards and local authorities applicable to product being installed. Water and electrical supply conditions must also comply to the applicable national and/or state standards, failing to comply with these provisions may void the product warranty and affect performance of the product.

Whilst all reasonable care has been taken in compiling the information in this document, the designs, dimensions and products shown are indicative only and should not be relied upon without our prior approval. Due to our policy of continuous development, we reserve the right to alter any details of specifications or products without notice. All information, drawings, technical specifications and product designs remains the property of Galvin Engineering Pty Ltd.

Within Australia: **1300 514 074** Outside Australia: P: +61 (0)8 9338 2344  
 F: +61 (0)8 9338 2340  
[sales@galvinengineering.com.au](mailto:sales@galvinengineering.com.au)  
[www.galvinengineering.com.au](http://www.galvinengineering.com.au)  
 ABN: 78 008 719 382

A business unit of

**GalvinEngineering**  
 the mark of reliability



PERTH | SYDNEY | MELBOURNE | BRISBANE | ADELAIDE | UNITED STATES OF AMERICA | UNITED KINGDOM | NEW ZEALAND