



Pipeset for 100TE Firemain Booster & Hydrant

Western Australia & Northern Territory

redemperor
fire + civil + plumbing

Specification Data Sheet



380162

WA/NT Pipeset for 100TE
Firemain Booster & Hydrant

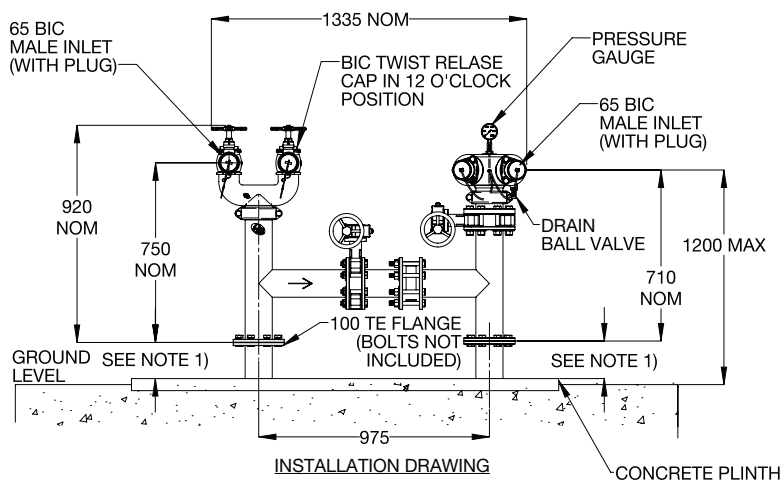
Features

- Fully assembled.
- Drilled Table E flange.
- Painted flame red.
- Complies to AS 2419.1.

Installation & Routine Service

Fire hydrant and valves to be installed as per AS2419. Regular routine service should be carried out in accordance with the AS1851 standard.

Typical Dimensions



NOTE:
1) THE HEIGHT OF THE CONNECTING FLANGE ABOVE THE CONCRETE PLINTH, AND THE HEIGHT OF THE CONCRETE PLINTH ABOVE THE GROUND LEVEL ARE CRITICAL. THIS IS TO ENSURE THE HYDRANT AND THE BOOSTER CONNECTIONS ARE THE REQUIRED HEIGHT ABOVE THE GROUND AS PER AS2419.1.

Warranty

Red Emperor products are covered under our Manufacturer's Warranty at www.galvinengineering.com.au. Red Emperor products must be installed in accordance with the installation instructions and in accordance with AS3500, PCA, relevant Australian Standards and local authorities applicable to product being installed. Water and electrical supply conditions must also comply to the applicable national and/or state standards, failing to comply with these provisions may void the product warranty and affect performance of the product.

Whilst all reasonable care has been taken in compiling the information in this document, the designs, dimensions and products shown are indicative only and should not be relied upon without our prior approval. Due to our policy of continuous development, we reserve the right to alter any details of specifications or products without notice. All information, drawings, technical specifications and product designs remains the property of Galvin Engineering Pty Ltd.



A family
owned
Australian
business

Within Australia: **1300 514 074**

Outside Australia: P: +61 (0)8 9338 2344

F: +61 (0)8 9338 2340

sales@galvinengineering.com.au

www.galvinengineering.com.au