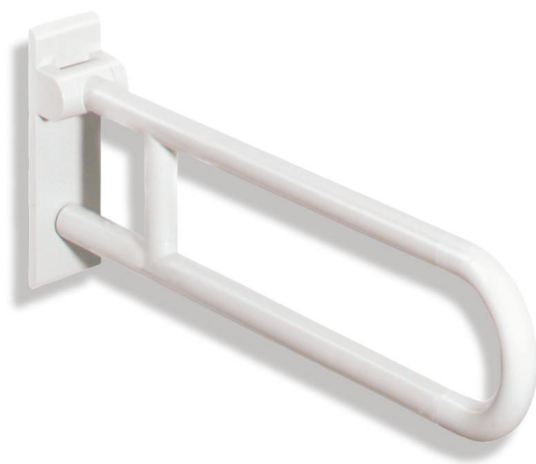


Product data sheet
Hinged support rail 801.50.220

HEWI



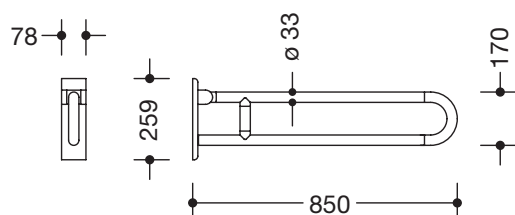
Similar picture

Hinged support rail 801.50.220

- two parallel rails running one above the other joined by a connecting bend
- for holding on to and providing support
- weight capacity 100 kg
- with continuous, corrosion resistant steel core and wall plate made of polyamide with integrated steel core
- can be folded upwards and, folded downwards with braking mechanism
- for wall mounting with wall-specific HEWI fixing material
- concealed fixing
- 850 mm projection, 259 mm high and 78 mm deep, 33 mm rail diameter
- made of high-quality polyamide according to HEWI colour chart
- toilet roll holder 801.50.010 and 801.50.011, WC flushing mechanism (radio-controlled) 801.50.060 and floor supports 950.50.021XA and 950.50.023XA for retrofitting
- CE marking: Medical devices Class 1 according to Directive 93/42 / EEC
- fulfils the DIN 18040, ÖNORM B1600/1601 and SIA 500 requirements



Dimensions in mm



Colours

98	99	97	95	92	90	18	24	36	33	86	84	74	72	55	50
----	----	----	----	----	----	----	----	----	----	----	----	----	----	----	----

Technical information subject to alteration, 16th April 2018

HEWI Heinrich Wilke GmbH
Postfach 1260
D-34442 Bad Arolsen

Telefon: +49 5691 82-366
Telefax: +49 5691 82-99366
international@hewi.com
www.hewi.com

HEWI (UK) Limited
Holm Oak Barn, Beluncle Halt
Stoke Road
Hoo Kent ME3 9NT

Phone +44 1634 258 200
Fax +44 1634 250 099
info@hewi.co.uk
www.hewi.com