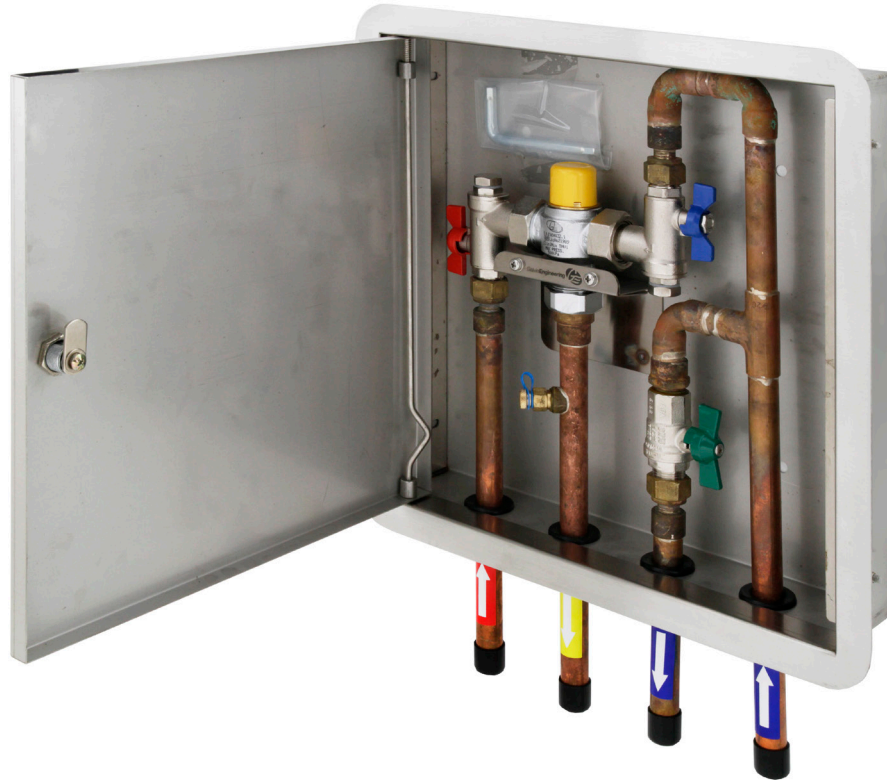


CliniMix® Thermostatic Mixing Valve with Universal Cabinet

Specification Data Sheet



Features

- NSW Health approved.
- Safe, simple and easy to maintain. Flat faced connections allow removal of the valve without disturbing the pipework.
- In the event of either hot or cold water supply failure the valve will shut down, quickly restoring flow when normal conditions resume.
- Suitable for installation in low pressure systems and will operate with a working pressure as low as 20kPa.
- Water temperature is established at plus or minus 2 degrees even during water pressure or temperature fluctuations.
- Units come complete with right angles isolating ball valve, non-return valve and strainer assemblies.
- Can be installed in any configuration with the water outlet in the horizontal or vertical position, and inlet connections can be rotated to suit inlet pipework.

- Sturdy vandal resistant cabinet with lockable door.
- Compact design to fit into stud work.
- Fully plumbed with copper tails and test point on outlet.
- Stainless steel bracket to support valve.

To Specify

Our CliniMix® range of AS/NZS 4032.1 approved thermostatic mixing valves, is designed to protect the most vulnerable from scalding or cold water shock by providing tempered water to the desired outlets that comply to the relevant Australian Standards and codes such as those of NSW Health.

Code:

WM-CABH032 - CliniMix® Cabinet Assembly with Universal Door 20mm Cold Water Bypass Bottom In & Out.



A family
owned
Australian
business



Performance Standards & Approvals

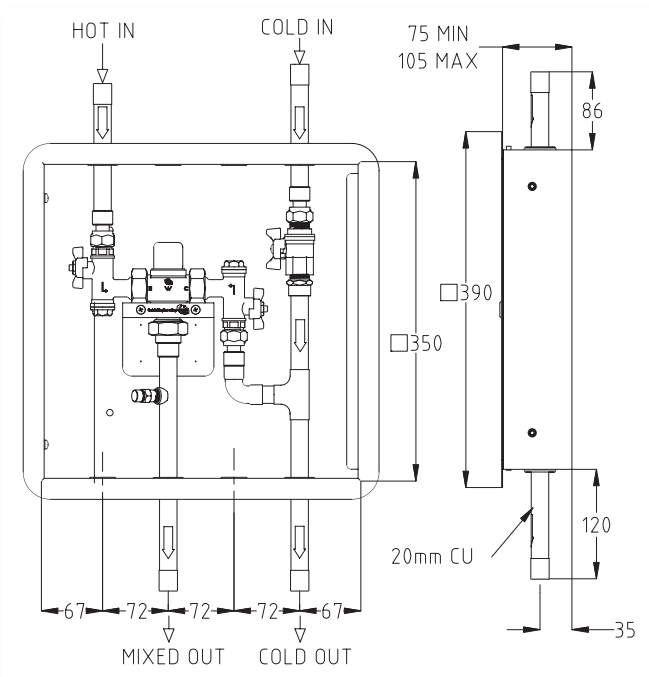
- AS4032.1 – WaterMark



WaterMark

AS 4032.1 WMKA 21989
SAI Global

Typical Dimensions



Maintenance & Cleaning

Galvin Specialised products should be cleaned with a soft damp cloth using only mild liquid detergent or soap and water. Do not use cleaning agents containing a corrosive acid, scouring agent or solvents. Do not use cream cleaners, as they are abrasive. Use of unsuitable cleaning agents may damage the surface. Any damage caused in this way will not be covered by warranty.

Regular maintenance should be carried out in accordance with the installation and troubleshooting guides provided with the product, relevant Australian Standards, local authorities and state codes.

Whilst all reasonable care has been taken in compiling the information in this document, the designs, dimensions and products shown are indicative only and should not be relied upon without our prior approval. Due to our policy of continuous development, we reserve the right to alter any details of specifications or products without notice. All information, drawings, technical specifications and product designs remains the property of Galvin Engineering Pty Ltd.

Technical Information

MIXED OUTLET TEMPERATURE

Preset Temperature (°C): 43.5

INLET TEMPERATURES

Cold Supply (°C): 5 Min - 30 Max

Hot Supply (°C): 55 Min - 90 Max

Hot to Mix Temperature Differential
for Stable Operation (°C): 10 Min

Cold to Mix Temperature Differential
for Stable Operation (°C): 5 Min

DYNAMIC INLET PRESSURES

Hot and Cold Inlet Pressures (kPa): 20 Min - 500 Max

STATIC INLET PRESSURE

Hot and Cold Inlet Pressures (kPa): 1000 Max

INLET PRESSURE RATIO

Maximum inlet pressure ratio
for stable operation: 6:1 (Either supply)

NOTE 1: For optimum operation it is recommended that the hot and cold water supply pressure be balanced to within +/- 10%

NOTE 2: Notwithstanding the above, compliance with AS/NZS 3500 must be maintained

Warranty

Galvin Specialised products are covered under our Manufacturer's Warranty at www.galvinengineering.com.au. Galvin Specialised products must be installed in accordance with the installation instructions and in accordance with AS3500 and the PCA, relevant Australian Standards and local authorities applicable to product being installed. Water and electrical supply conditions must also comply to the applicable national and/or state standards, failing to comply with these provisions may void the product warranty and affect performance of the product

410 Victoria Rd, Malaga, WA 6090

Within Australia: **1300 514 074** Outside Australia: P: +61 (0)8 9249 5900

F: +61 (0)8 9249 5916

sales@galvinengineering.com.au

www.galvinengineering.com.au

ABN: 78 008 719 382

PERTH | SYDNEY | MELBOURNE | BRISBANE | ADELAIDE

A business unit of

GalvinEngineering 
the mark of reliability