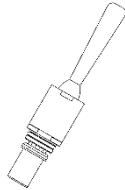
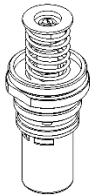


# CP-BS Lead Safe™ Timeflow Lever/Knee Operated Taps Replacement Cartridges

## PRODUCT CODES:

- 173.92.20.00 – 6 sec.

- 173.92.22.00 – 6 sec.



## SPECIFICATIONS

- Our range of AS/NZS 3718 approved tapware is reliable and durable.
- It is designed to suit the increasing need for the conservation of water and the minimisation of vandalism.
- Constructed from dezincification resistant brass Knee Operated tapware and Lever Operated tapware delivers a constant flow irrespective of pressure to provide a controlled stream.
- The cartridges are made of Lead Safe\* DR Brass.

\* As 'lead free' is not currently defined by law in Australia and New Zealand, we have based our definition of Lead Safe™ on the requirements of s1417 of the USA's Safe Drinking Water Act (SDWA) and the relevant US standards NSF61 / NSF372. The SDWA defines 'lead free' as "not more than a weighted average of 0.25% lead when used with respect to the wetted surface of pipes, pipe fittings, plumbing fittings and fixtures".

**IMPORTANT:** All Time Flow Taps are tested in accordance with AS/NZS 3718 and leave our premises in good working order. Time may vary due to changes in temperature, pressure, flow rate and water quantity.

## TECHNICAL DATA

Assembly Thread	M26 x 19 TPI - Male	
Outlet	N/A	
Headwork	Time Flow Cartridge	
Working Pressure Range (kPa)	Min	50
	Max	500
Working Temperature (°C)	Min	5
	Max	65
Nominal Flow Rate (LPM)	N/A	
Construction	Brass	
Finish	Chrome	

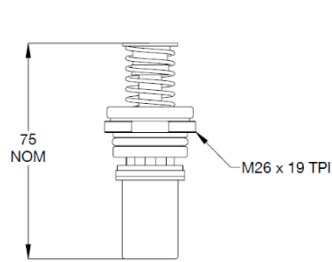
**NOTE:** Galvin Engineering continually strive to improve their products. Specifications may change without notice.

## TOOLS REQUIRED

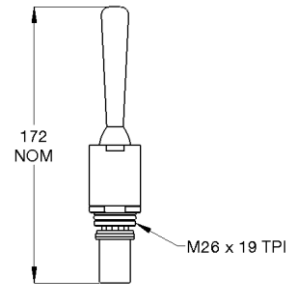
- Spanner
- Grease

**PRE-INSTALLATION**

**Note:** Before installation, all lines must be flushed. We recommend that a line strainer be installed prior to Ezy-Push Time Flow cartridge taps to eliminate any foreign material.



Item code: 173.92.20.00



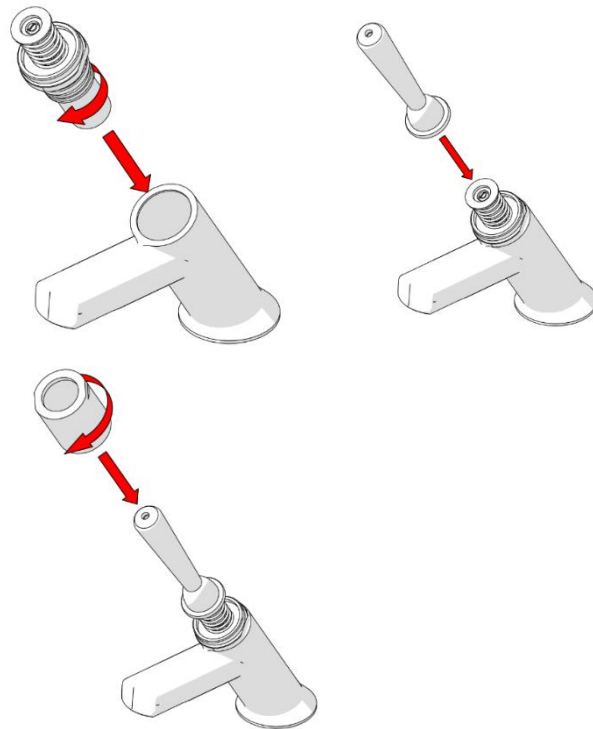
Item code: 173.92.22.00

**INSTALLATION**

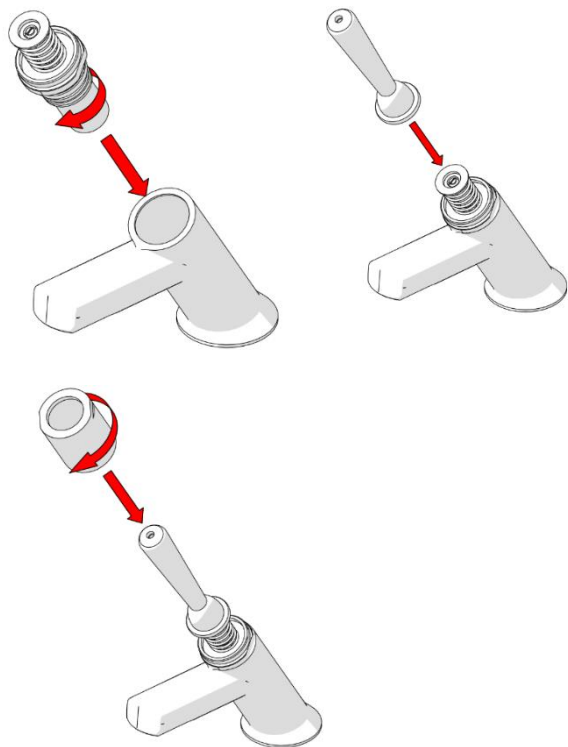
**IMPORTANT:** Galvin Specialised products must be installed in accordance with these installation instructions and in accordance with AS/NZS 3500, the PCA and your local regulatory requirements. Water and/or electrical supply conditions must also comply to the applicable national and/or state standards. Failing to comply with these provisions shall void the product warranty and may affect the performance of the product.



1. Turn off water supply
  - Prior installation turn off water supply.

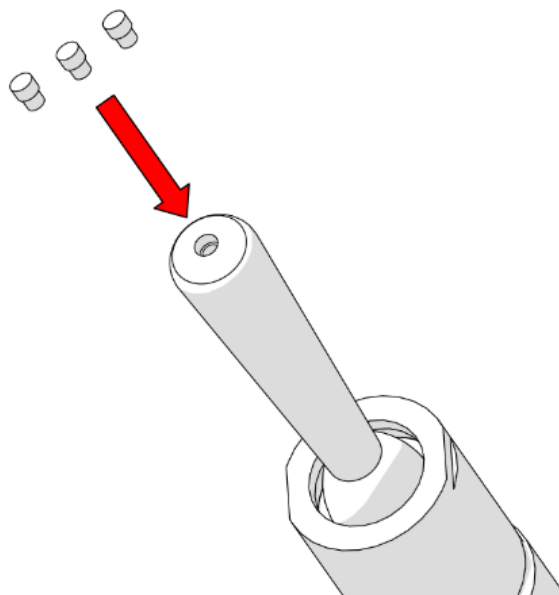


2. Remove Timeflow Cartridge
  - Unscrew the sleeve and cartridge.



**3. Replace Timeflow Cartridge**

- Fit the new timeflow cartridge using a 24 mm spanner.
- Tighten the cartridge assembly down firmly, ensuring a tight seal on the o-ring. Do not over tighten (recommended 9-10Nm) as this could restrict or stop the flow. If this occurs loosen the cartridge by ¼ of a turn.



**4. Place indicator and inspect**

- Fit color indicator hot (red), cold (blue) or warm (yellow) as required on the lever.
- When installation is complete, slowly open water supply and inspect for leaks.

**TROUBLESHOOTING**

PROBLEM	CAUSE	RECTIFICATION
Taps are dripping water	Dirt/Debris in cartridge	Remove and clean cartridge
	Faulty cartridge	Replace cartridge
Water is not flowing from tap	Water is turned off	Turn on water
	Aerator or flow regulator is blocked by debris	Remove aerator and/or flow regulator from tap and remove debris. Install an inline strainer.

**WARRANTY**

The warranty set forth herein is given expressly and is the only warranty given by the Galvin Engineering Pty Ltd. With respect to the product, Galvin Engineering Pty Ltd makes no other warranties, express or implied. Galvin Engineering Pty. Ltd. hereby specifically disclaims all other warranties, express or implied, including but not limited to the implied warranties of merchantability and fitness for a particular purpose.

Galvin Engineering Pty Ltd products are covered under our manufacturer’s warranty available for download from [www.galvinengineering.com.au](http://www.galvinengineering.com.au) Galvin Engineering Pty Ltd expressly warrants that the product is free from operational defects in workmanship and materials for the warranty period as shown on the schedule in the manufacturer’s warranty. During the warranty period, Galvin Engineering will replace or repair any defective products manufactured by Galvin Engineering without charge, so long as the terms of the Manufacturer’s warranty are complied with.

The remedy described in the first paragraph of this warranty shall constitute the sole and exclusive remedy for breach of warranty, and Galvin Engineering Pty Ltd shall not be responsible for any incidental, special or consequential damages, including without limitation, lost profits or the cost of repairing or replacing other property which is damaged if this product does not work properly, other costs resulting from labour charges, delays, vandalism, negligence, fouling caused by foreign material, damage from adverse water conditions, chemical, electrical or any other circumstances over which Galvin Engineering has no control. This warranty shall be invalidated by any abuse, misuse, misapplication, improper installation or improper maintenance or alteration of the product.