

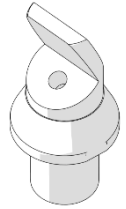
Product Installation Guidelines & Scope of Use

Version 4.1, 8 May 2025, Page 1 of 4
Document No.: 85333X

Ezy-Drink® SS316 Lead Safe™ Remote Drink Tap Bubbler and Stem

PRODUCT CODE:

- 85333X



SPECIFICATIONS

- Lead safe stainless-steel construction*

IMPORTANT: All Ezy-Drink® remote bubbler taps are tested in accordance with AS 3718 and leave our premises in good working order.

*Our Lead Safe™ product range is compliant with the Lead-Free Requirements of the NCC 2022 Vol. Three, Clause A5G4(2) and NSF/ANSI 372.

WARNINGS: Special attentions to be paid on notes, photos, images, or drawings of assembly steps marked with the warning symbol.



TECHNICAL DATA

Inlet		G ½"
Outlet		Metal Mouthguard
Headwork		N/A
Working Pressure Range (kPa)	Min	30
	Max	500
Working Temperature Range (°C)	Min	5
	Max	65
Nominal Flow Rate (LPM)		N/A
Finish		Stainless Steel
NOTE: Galvin Engineering continually strive to improve their products. Specifications may change without notice.		

TOOLS REQUIRED

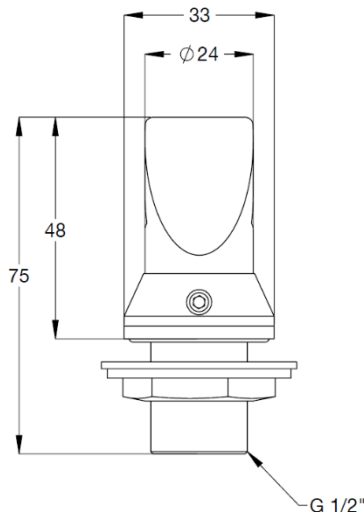
- Power drill
- Wrench
- 2mm Hex Key

PRE-INSTALLATION - MOUNTING DETAILS

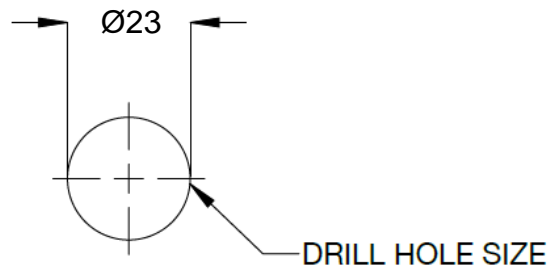
- If the mounting holes do not already exist, mark out and drill the holes in the bench/trough, as shown in rough-in dimensions.



Note: Before installation, all lines must be flushed. We recommend that a line strainer be installed prior to drinking taps to eliminate any foreign material.

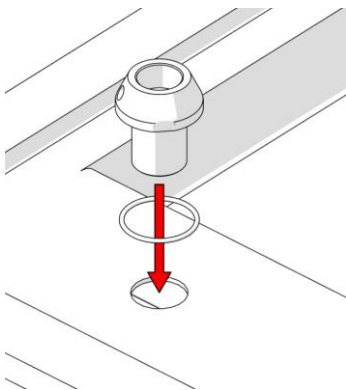


Rough-In Dimensions



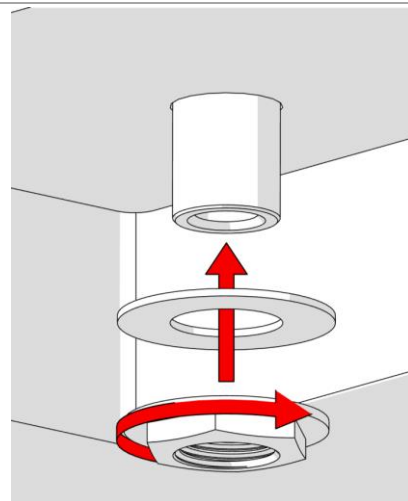
INSTALLATION

INSTALLATION COMPLIANCE: Galvin Engineering products must be installed in accordance with these installation instructions and in accordance with AS/NZS 3500, the PCA and your local regulatory requirements. Water and/or electrical supply conditions must also comply to the applicable national and/or state standards. Failing to comply with these provisions shall void the product warranty and may affect the performance of the product.



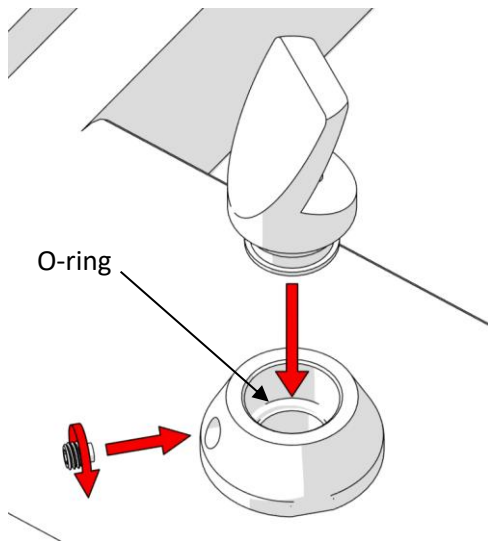
1. Mounting Stem

- Drill hole in bench/trough as shown in rough-in dimensions.
- Fit O-Ring to the groove underneath the stem.
- Insert stem through the drilled hole ensuring the O-Ring has seated properly.



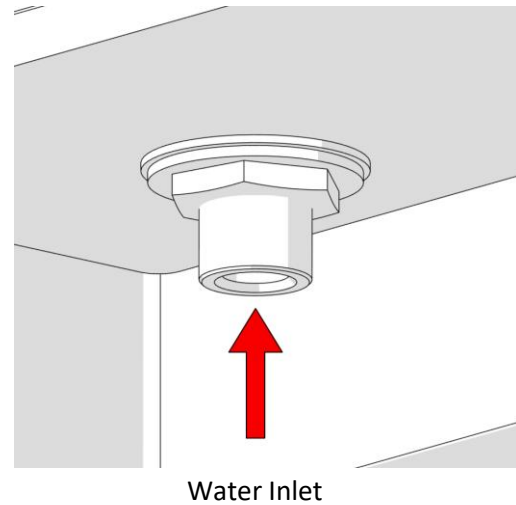
2. Fit

- Fit rubber washer, back nut and tighten.



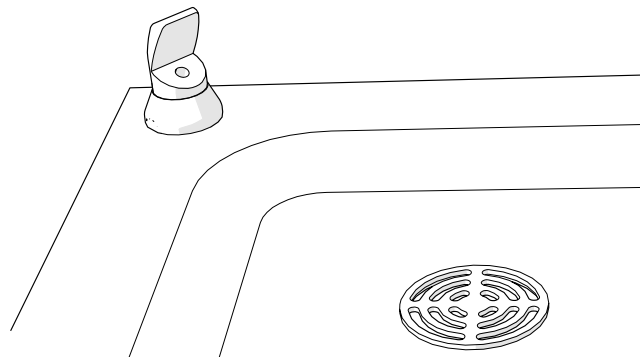
3. Fit Bubbler

- Fit bubbler into stem ensuring it is seated correctly, and the O-ring is present.
- Turn the bubbler to the desired position.
- Once positioned, fit and tighten grub screw. The bubbler should no longer turn.



4. Connect Water

- Connect mains water.



5. Test

- Test installation and check for leaks.

TROUBLESHOOTING

PROBLEM	CAUSE	RECTIFICATION
Water is not flowing from bubbler	Water is turned off	Turn on water
Installation is leaking	Incorrectly installed	Disassemble and follow the installation instructions above ensuring the O-Rings are positioned correctly.

WARRANTY

Galvin Engineering products are covered under our Manufacturer's Warranty. Galvin Engineering products must be installed in accordance with the installation instructions and in accordance with AS 3500 and NCC Volume Three, relevant Australian Standards and local authorities applicable to product being installed. Water and electrical supply conditions must also comply to the applicable national and/or state standards, failing to comply with these provisions may void the product warranty and affect performance of the product.

Please visit www.galvinengineering.com.au to view the full warranty, our Installation Compliance and Maintenance & Cleaning information as well as any other additional information.