

© COPYRIGHT RESERVED. THE DRAWING IS THE PROPERTY OF GALVIN ENGINEERING AND SHALL BE RETURNED ON DEMAND. IT MUST NOT BE REPRODUCED, COPIED OR COMMUNICATED TO ANY OTHER PARTY WITHOUT THE WRITTEN PERMISSION OF GALVIN ENGINEERING. CONTACT: WWW.HKHDFITS.COM

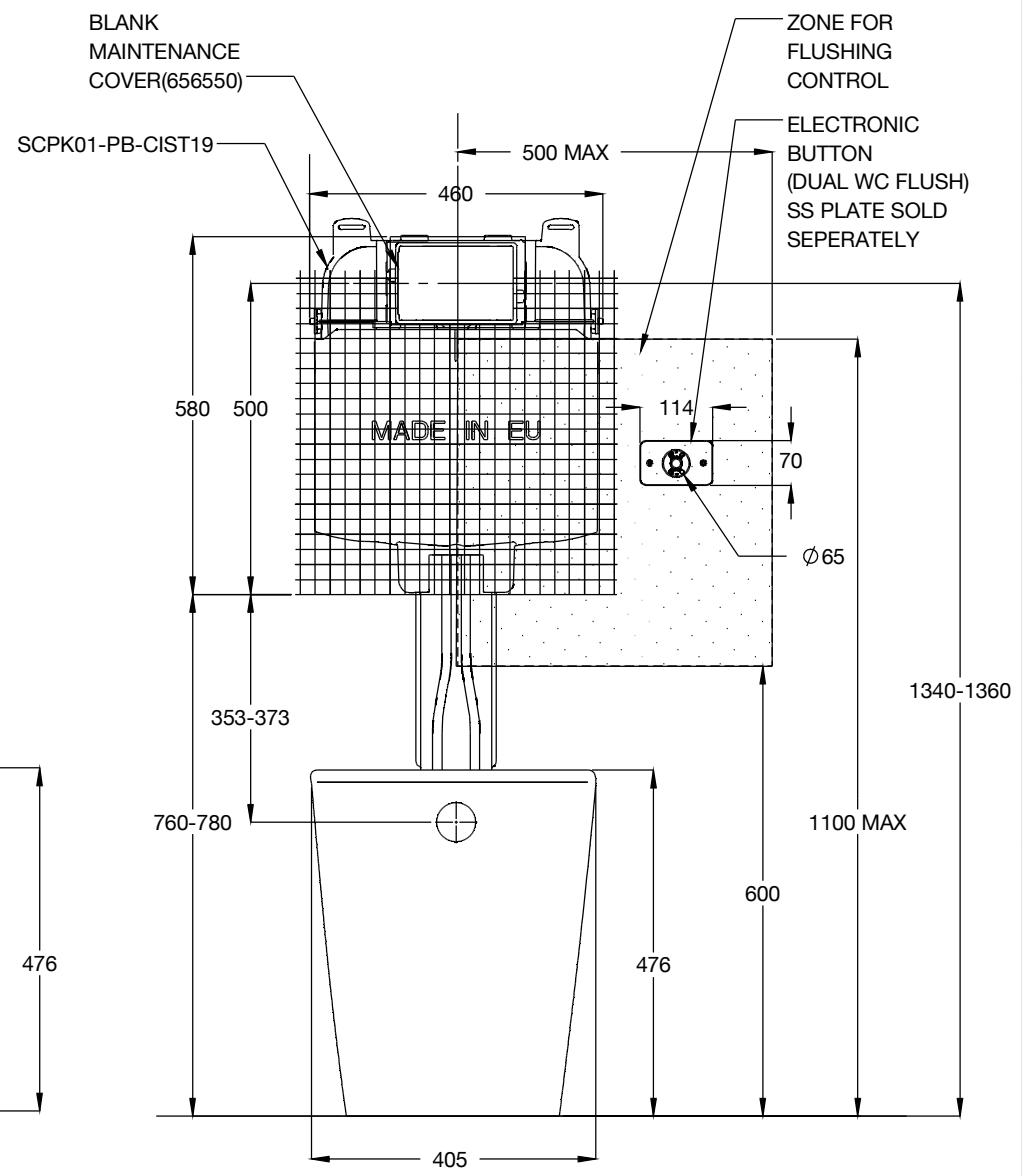
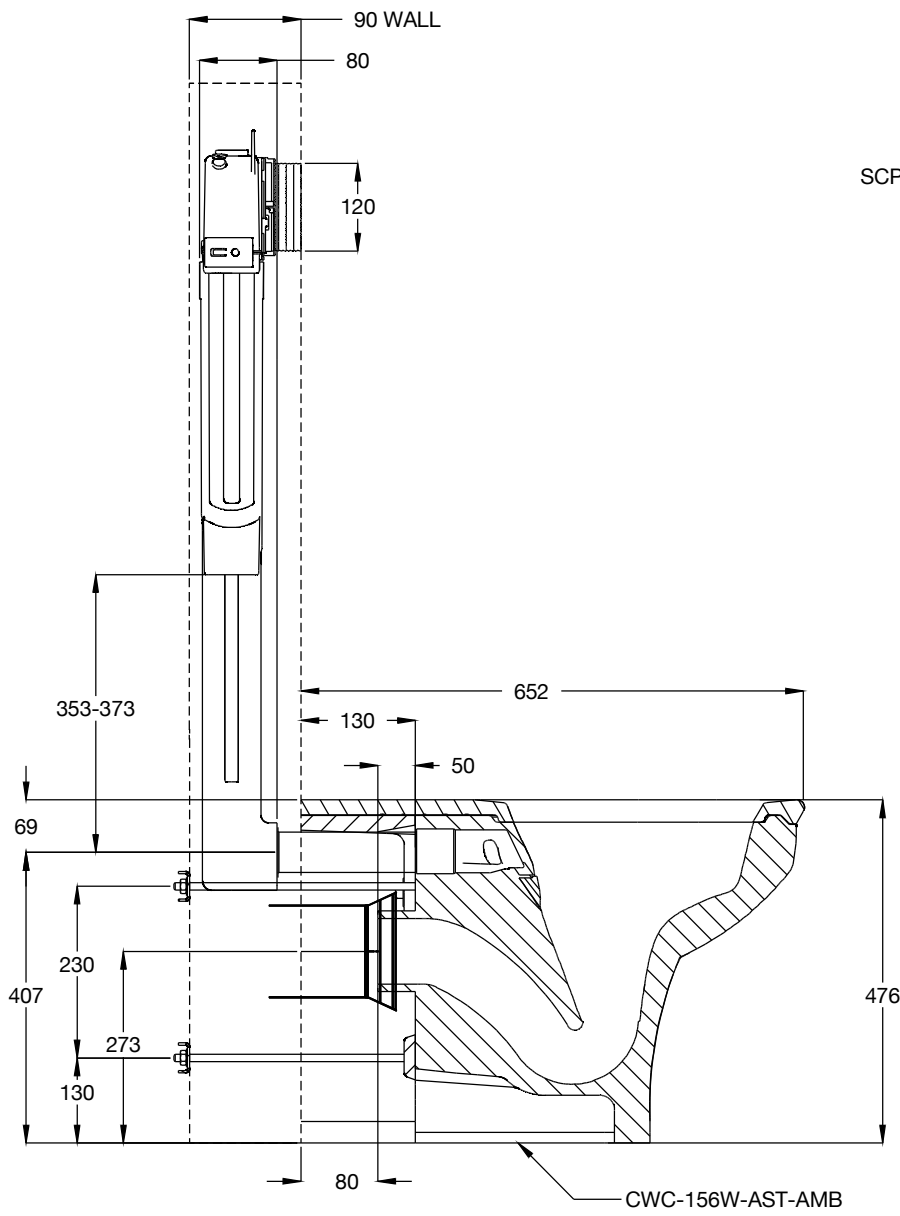
REV	DESCRIPTION	DATE	APPR
A			

FINISH	
UNLESS OTHERWISE STATED TOLERANCES	
X	±1.0
XX	±0.15
XX	±0.05

ISSUED	SCALE	SHEET
APPR	NOT TO SCALE	1 OF 1
OKD		
DRN		
SG		
13/12/2019		
MANUFACTURED TO: AS N/A		
410 VICTORIA RD, MALAKA, N/A, 75278 008 719 832		
ASK TITLE		
CWC-156W-AST-AMB + SCPK01-PB		
-CIST19 + 656550		
DRAWING NO		



Galvin Engineering
the mark of reliability



- NOTES:
- 1) PAN ADAPTOR PROVIDED WITH PAN.
 - 2) REFER TO PAN & CISTERN INSTALLATION MANUAL FOR CORRECT FIXINGS & INSTALLATION.
 - 3) DRAWINGS USED AS A GUIDE ONLY & SUBJECT TO CHANGE.
 - 4) THIS CISTERN REQUIRES A GPO & ELECTRONIC COMPONENTS TO BE INSTALLED IN A ACCESSIBLE LOCATION FOR MAINTENANCE.